

PATENT COOPERATION TREATY (PCT)

Common Quality Framework for International Search and Preliminary Examination

INITIAL REPORT ON QUALITY MANAGEMENT SYSTEMS

Prepared by the Swedish Patent and Registration Office (PRV)

The Authority should provide general background information relevant to the quality management system (QMS) as set forth in this template.

The descriptions below each main heading of this template should be considered examples of the type and arrangement of information that should be included under each heading. Each Authority may provide additional information beyond that set forth in this template as desired.

INTRODUCTION (PARAGRAPHS 21.01 - 21.03)

If applicable, the Authority may at this point indicate any recognized normative reference or basis for their quality management system besides Chapter 21, such as ISO 9001, under the heading "Normative Reference for QMS"

For example: "Normative reference for QMS: ISO 9001, EQS (European Quality System)"

Each authority should then provide at least the information indicated in the descriptive boxes, under the following headings

Normative reference for QMS: ISO 9001:2008, EQS. The Swedish Patent Office is compliant with all parts of ISO9001:2008 and EQS. As for section 7 of EQS the independent review mechanism consists of our external review partner engaged for review of our QMS according to ISO 9001. **External Review partners are engaged on a three year basis. As a complement to our QMS system, strategic planning for the patent department is based on "Balanced Scorecard", clearly defining short and long term goals for the department.**

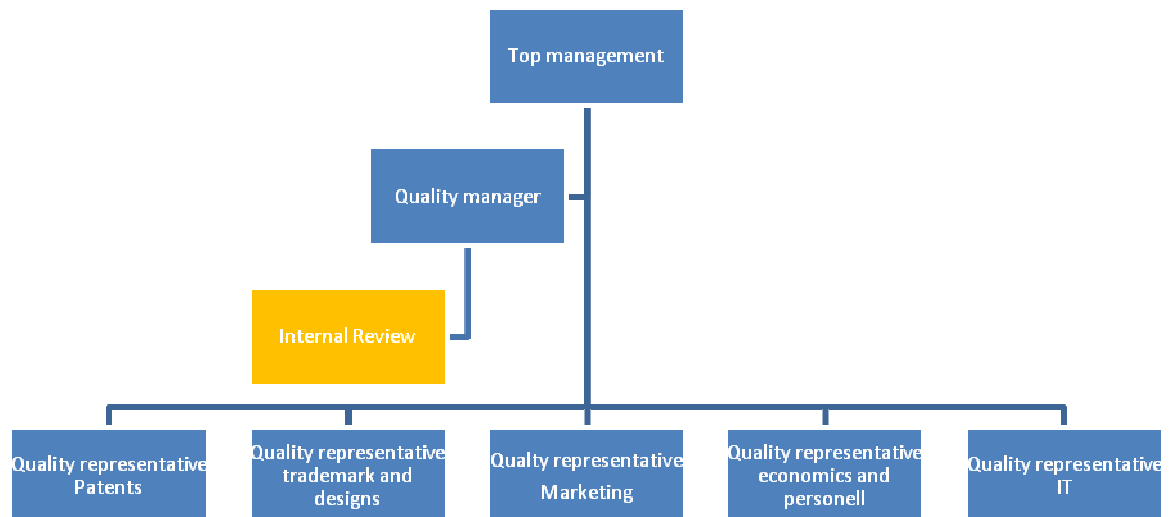
1. LEADERSHIP AND POLICY

21.04 Confirm that the following are clearly documented, and that this documentation is available internally:

- (a) The quality policy established by top management.
- (b) The roles and names of those bodies and individuals responsible for the QMS, as delegated by top management.
- (c) An organisational chart showing all those bodies and individuals responsible for the QMS.

21.04

- a) The quality policy established by PRV top management is described in our strategic plan available on PRV Intranet. PRV provides a service commitment on our external web www.prv.se, the commitment includes statements regarding to timeliness, costs and quality on our services.
- b) The **Executive Management team** has delegated the role as quality manager as defined in ISO 9001:2008. 5.5.2. This role is currently held by Måns Marklund. The quality manager heads a group of representatives from the different parts of the organization, the quality council. The quality manager is responsible of the internal review group as well as contacts with external reviewers.
- c) The Quality Manager and the quality council acts as support to management on all levels to ensure the proper function of the QMS. However all managers are responsible of running the business according to the QMS.
- d) **The Chief Controller is responsible of strategic and planning issues regarding quality in the Executive Management team.**



21.05 Indicate (e.g. by means of a table) the extent of compatibility between the Authority's QMS and the requirements of Chapter 21 of these International Search and Preliminary Examination Guidelines. Alternatively, indicate where the Authority is not yet compliant with these requirements.

[Sample table, to be amended as necessary]

Chapter 21 requirement			Extent of compliance		
			full	part	no
21.04	(a)	Quality policy available	✓		
	(b)	Identified roles and names for QMS responsibility	✓		
	(c)	Organisational chart available	✓		
21.05		Established compatibility of QMS with Chapter 21	✓		
21.06	(a)	Mechanisms to ensure effectiveness of the QMS	✓		
	(b)	Control of the continual improvement process	✓		
21.07	(a)	Communication of management about this standard to staff	✓		
	(b)	The PCT Guidelines are in line with the Authority's QMS	✓		
21.08	(a)	Management reviews take place	✓		
	(b)	Quality objectives are reviewed	✓		
	(c)	Communication of quality objectives throughout the Authority	✓		
21.09	(a)	Performance of a yearly internal review of the QMS in/to	✓		
	(b)	(i) determine the extent to which the QMS is based on Chapter 21	✓		
		(ii) determine the extent to which S&E complies with PCT Guidelines	✓		
	(c)	an objective and transparent way	✓		
	(d)	using input incl. information according paragraph 21.17	✓		
	(e)	recording the results	✓		
21.10		Assurance to monitor and adapt to actual workload	✓		
21.11	(a)	Infrastructure in place to ensure that a quantity of staff	✓		
		(i) sufficient to deal with the inflow of work	✓		
		(ii) which maintains tech. qualifications to S&E in all technical fields	✓		
		(iii) which maintains the language facilities to understand languages according to Rule 34	✓		
	(b)	Infrastructure to provide a quantity of skilled administrative staff	✓		
		(i) at a level to support the technically qualified staff	✓		
		(ii) for the documentation records	✓		
21.12	(a)	(i) Ensuring appropriate equipment to carry out S&E	✓		

Chapter 21 requirement			Extent of compliance		
			full	part	no
		(ii) Ensuring documentation accord. to Rule 34	✓		
	(b)	(i) Instructions to help staff understand and act accord. the quality criteria and standards	✓		
		(ii) Instructions to follow work procedures accurately and they are kept up-to-date.	✓		
21.13		(i) L&D program to ensure and maintain necessary skills in S&E	✓		
		(ii) L&D program to ensure awareness of staff to comply with the quality criteria and standards.	✓		
21.14	(a)	System in place for monitoring resources required to deal with demand	✓		
	(b)	System in place for monitoring resources required to comply with the quality standards in S&E	✓		
21.15	(a)	Control mechanisms to ensure timely issue of S&E reports	✓		
	(b)	Control mech. regarding fluctuations in demand and backlog	✓		
21.16	(a)	Internal quality assurance system for self assessment	✓		
		(i) for compliance with S&E Guidelines	✓		
		(ii) for channeling feedback to staff	✓		
	(b)	A system for measurement of data and reporting for continuous improvement	✓		
	(c)	System for verifying the effectiveness of actions taken to correct deficient S&E work	✓		
21.17	(a)	Contact person helping identify best practice between Authorities	✓		
	(b)	Contact person fostering continual improvement	✓		
	(c)	Contact person providing for effective comm. with other Authorities for feedback and evaluation	✓		
21.18	(a)	(i) Appropriate system for handling complaints	✓		
		(ii) Appropriate system for taking preventive/corrective actions	✓		
		(i) Appropriate system for offering feedback to users	✓		
	(b)	(i) A procedure for monitoring user satisfaction & perception	✓		
		(ii) A procedure for ensuring their legitimate needs and expectations are met	✓		
	(c)	Clear and concise guidance on the S&E process for the user	✓		

Chapter 21 requirement			Extent of compliance		
			full	part	no
	(d)	Indication where and how the Authority makes its quality objectives publicly available	✓		
21.19		Established comm. with WIPO and desig. + elected offices	✓		
21.20		QMS of Authority clearly described (e.g. Quality Manual)	✓		
21.21	(a)	Documents making up the Quality Manual have been prepared and distributed	✓		
	(b)	Media available to support the Quality Manual	✓		
	(c)	Document control measures are taken	✓		
21.22	(a)	Quality policy of the Authority and commitment to QMS	✓		
	(b)	Scope of QMS	✓		
	(c)	Organizational structure and responsibilities	✓		
	(d)	the documented processes are carried out in the Authority	✓		
	(e)	Resources available to carry out processes	✓		
	(f)	a description of the interaction between the processes and the procedures of the QMS.	✓		
21.23	(a)	Records which documents are kept and where they are kept	✓		
	(b)	Records of results of management review	✓		
	(c)	Records about training, skills and experience of staff	✓		
	(d)	Evidence of conformity of processes	✓		
	(e)	Results of reviews of requirements relating to products	✓		
	(f)	Records of the S&E process carried out on each application	✓		
	(g)	Record of data allowing individual work to be tracked	✓		
	(h)	Record of QMS audits	✓		
	(i)	Records on actions taken re. non-conforming products	✓		
	(j)	Records on actions taken re. corrective actions	✓		
	(k)	Records on actions taken re. preventive actions	✓		
	(l)	Records referring to search process documentation	✓		
21.24	(a)	(i) Recording of the databases consulted during search	✓		
		(ii) Recording of keywords, combination of words and truncations during search	✓		
		(iii) Recording of the languages used during search	✓		
		(iv) Recording of classes and combinations thereof consulted during search	✓		

Chapter 21 requirement			Extent of compliance		
			full	part	no
	(b)	Records about other information relevant to the search	✓		
	(c)	(i) Records about limitation of search and its justification	✓		
		(ii) Records about lack of clarity of the claims	✓		
		(iii) Records about lack of unity	✓		
21.25		Report on its own internal review processes	✓		
21.26- 21.28		Additional information on further inputs to its internal reviews	✓		
21.29		Initial report called for by paragraph 21.19	✓		

21.06 Indicate with reference to the organizational chart those bodies and mechanisms management uses to ensure:

(a) the effectiveness of the QMS; and

(b) that the process of continual improvement progresses.

- a) The effectiveness of the QMS is ensured at least twice a year by Management reviews as stated in ISO9001:2008 5.6. **The executive Management team ensures the effectiveness of each process covered by the QMS by a follow up scheme, including the evaluation of each process ability to deliver the quality of service as stated in the service commitment**
- b) The progress of continual improvement is ensured at the management reviews.
 The management reviews are conducted at least twice a year by top management and the management of the Patent department.
 Topics for the management reviews include:
- Function of management processes
 - Function of strategic and business plan
 - Function of goals and targets
 - Function of follow-up procedures
 - Function of responsibility and authority distribution
 - Function of development model
 - Products and services
 - Customer reactions
 - Non-conformities and improvements
 - Internal reviews
 - External reviews
 - QMS improvements

21.07 Indicate how management of the Authority communicates to its staff the importance of meeting treaty and regulatory requirements including:

(a) those of this standard; and

(b) complying with the Authority's QMS.

- a) The importance of meeting treaty and regulatory requirements of PCT Ch 21 is communicated by patent experts, directors and our legal section. The communication is normally oral but in some cases complemented by intranet news flashes or similar.
- b) The communication on complying with the authorities QMS is done by designated quality representatives as well as directors/management.

21.08 Indicate how and when top management of the Authority or delegated officers:

- (a) conducts management reviews and ensures the availability of appropriate resources;*
- (b) reviews quality objectives; and*
- (c) ensures that the quality objectives are communicated and understood throughout the respective Authority.*

- a) Management reviews are conducted at least twice a year by **Executive Management team** as well as by department management. However resource planning and management is performed by resource owners of each process. (i.e. patent process)
- b) Quality objectives are reviewed frequently (weekly) at management meetings, the effectiveness of actions taken are evaluated at the management reviews.
- c) Quality objectives are communicated weekly by management meeting protocols and by examiner meetings

21.09 Indicate whether top management or delegated officers of the Authority perform an internal review of the QMS in accordance with paragraphs 21.25-21.28:

- (a) at least once per year (cf. paragraph 21.25);*
- (b) in accordance with the minimum scope of such reviews as set out in Section 8, namely:*
 - (i) to determine the extent to which the QMS is based on Chapter 21 (cf. paragraphs 21.25, 21.27(a));*
 - (ii) to determine the extent to which Search and Examination work complies with PCT Guidelines (cf. paragraphs 21.25, 21.27(a));*
- (c) in an objective and transparent way (cf. paragraph 21.25);*
- (d) using input including information according to paragraphs 21.27 (b)-(f);*
- (e) recording the results (cf. paragraph 21.28).*

- a) Internal review is performed by delegated officers on different processes and organizational parts at least once a year.
- b)
 - i) reviews of patent processes or patent related functions shall always determine to what extent the QMS comply with all other rules and regulations for example; PCT Ch.21
 - ii) reviews of patent processes or patent related functions shall always include determination of compliance with all available rules and regulations i.e. Search and Examination work compliant with PCT Guidelines.
- c) Delegated officers are trained to perform objective and transparent reviews. At least one officer per review has no connection to the reviewed function / process.
- d) Input to reviews by delegated officers include information on corrective and preventive actions taken to eliminate cause of non-compliance (21.27 b), follow up actions from previous reviews (c), the effectiveness of the QMS itself and the process reviewed (d), feedback from customers (e) and recommendations for improvement (f)

e) Results from internal reviews are recorded by:

- a) Internal review reports – fully accessible to all on intranet.
- b) Non-conformities are addressed in our non-conformities database.
- c) Customer input is addressed in customer input database.
- d) Suggestions for improvement addressed in improvement database.

Results from internal reviews serve as input to management reviews as well as external reviews.

2. Resources

21.10 *Explanatory note: The granting of ISEA status means that the Authority has demonstrated it has the infrastructure and resources to support the search and examination process. Chapter 21 calls for assurance that the Authority can continually support this process while accommodating changes in workload and meeting QMS requirements. The responses to Sections 21.11 to 21.14, below, should provide this assurance.*

21.11 *Human resources:*

- (a) *Provide information about the infrastructure in place to ensure that a quantity of staff:*
 - (i) *sufficient to deal with the inflow of work;*
 - (ii) *which maintains the technical qualifications to search and examine in the required technical fields; and*
 - (iii) *which maintains the language facilities to understand at least those languages in which the minimum documentation referred to in Rule 34 is written or is translated*
is maintained and adapted to changes in workload.
- (b) *Describe the infrastructure in place to ensure that a quantity of appropriately trained/skilled administrative staff is maintained and adapted to changes in workload:*
 - (i) *at a level to support the technically qualified staff and facilitate the search and examination process;*
 - (ii) *for the documentation of records.*

21.10

*It is important to declare that the QMS of the Swedish patent office is based on a purely process oriented view, and for each process there are two important management positions: The "Process owner" and the "Resource owner". The Resource owner has the responsibility to focus mainly on the quantity and ability of resources, consequently staff. **The process owner is responsible of the process infrastructure and overall function of the process.***

21.11

a)

i) Demand, production and productivity are closely monitored on a weekly basis for every technical group, and every month for directorates and divisions. Dynamic allocation of resources is possible only if in accordance with technical and language qualification requirements.

A computer based monitoring system concerning demand, combined with productivity algorithms, identifies resources needed at different technical groups or directorates at any

given time. Additional information from a competence profile system and regular audits give management control over the dynamic allocation of resources, ensuring that allocation complies with the quality standards for search and examination.

Examiners in technical groups have large influence on production planning and are expected to give prompt feedback to management in case of indications of forthcoming workload issues.

ii) Employment requirements guarantee technical and language qualifications necessary for search and examination within at least one technical field. A trial period of 6 months is applied for all employees. Search and examination staff passes through internal education program including several examinations. In order to ensure that technical qualifications are maintained, an individual competence plan is used and evaluated on a yearly basis. Further training is documented and evaluated.

iii) Search and examination staff have language skills according to PCT regulations. The individual competence plan includes language updates if necessary. Staff is supported by computer based translation tools, in-house language experts. If necessary there is an option of using external translation experts.

b)

i) The Formalities directorate as well as the Legal section support the technically qualified staff and facilitate the search and examination process. The infrastructure in place to ensure that the quantity of staff is adapted to changes in workload is mainly based on management meetings where the resource owner discusses resource issues with all managers both from the technical directorates (as described in 21.11 a) i. above) and with managers from the formalities directorate and the legal section.

ii) Same as above.

21.12 Material resources:

(a) *Describe the infrastructure in place to ensure that*

(i) *appropriate equipment and facilities such as IT hardware and software to support the search and examination process are provided and maintained;*

(ii) *at least the minimum documentation referred to in Rule 34 is available, accessible, properly arranged and maintained for search and examination purposes. State whether it is on paper, in microform or stored on electronic media, and where.*

(b) *Describe how instructions*

(i) *to help staff understand and adhere to the quality criteria and standards, and*

(ii) *to follow work procedures accurately and consistently*

are documented, provided to staff, kept up-to-date and adapted when necessary.

21.12

a)

i) Support processes and functions are in place to support the search and examination process. An In-house IT function is responsible for IT soft- and hardware. The IT function is separated from the organization and a supplier-purchaser relationship is used to handle ordering and delivery conditions.

ii) The PRV has access to a vast amount of documentation that exceeds the minimum requirements set by the PCT and the Regulations. Most of the documentation is either stored electronically or can be accessed online. The PRV has a separate library and documentation section responsible for monitoring and updating documentation.

b) All instructions;

i) As to help staff understand and adhere to quality criteria and standards as well as

ii) To follow work procedures accurately and consistently;

Are documented and provided to staff on the intranet. The instructions are presented in a process oriented view that gives staff an overview of what instructions are applicable at all parts of the process. The different instructions are evaluated on a continuous basis by different expert and cross referential groups. Any changes to instructions are documented and news flashed.

21.13 Training resources:

Describe the training and development infrastructure and program which ensures that all staff involved in the search and examination process:

(i) acquire and maintain the necessary experience and skills; and

(ii) are fully aware of the importance of complying with the quality criteria and standards.

21.13

a)

i) Examiners and Formalities staff takes part in an effective initial training and development programme. They are approved through different level examination tests to ensure they acquire and maintain the necessary competence requirements. During this period the examiner is under the guidance of a tutor, who is responsible for the results of the examiner. Detailed written training material and online training programmes support the in-house training. Refresher and update courses and seminars are held on a regular basis and initiated by either the quality manager, as a result of quality checks, or by management in response to new situations or guidelines. Directors provide individual educational programmes, in consultation with the individual, concerning both Intellectual Property Law and technical aspects. The educational programmes include: workshops (in-house), examiner exchange, in-house/ external seminars and courses. An extensive cross search/examining programme has been developed to ensure continuity and quality. Patent experts are trained within a special expert programme attended by highly qualified examiners. The programme is extensive and runs over several years combined with normal search and examination duties. The programme ends with an examination and oral presentation of an examination thesis.

ii) All staff are informed of the importance of complying with the quality criteria and standards as a part of the introduction to PRV course when they start their employment. The quality manager has a main responsibility to ensure that this knowledge is maintained, this is done by yearly quality information meetings.

21.14 Oversight over resources:

Describe the system in place for continuously monitoring and identifying the resources required:

(a) to deal with demand; and

(b) comply with the quality standards for search and examination

21.14

a) For long term (more than a year forward) the demand is predicted from monitoring and interpreting previous demand. Also, knowledge of the current and predicted state of the market is combined with statistical analysis (Holtz-Winther), to predict demand. The required resources are thereafter calculated with knowledge of previous production capacity using well-known macroscopic algorithms.

On a shorter term the demand can be more precisely monitored by viewing actual demand values based on application databases. Also the resources are more precisely calculated by using the same algorithms as for long term production estimation but with more accuracy. A specific in-house computer program is used by the directors to calculate and match demand and resources on a technical field level.

b) The system for continuously monitoring and identifying resources required complying with quality standards for search and examination is closely linked with the system for monitoring demand as described above. When we have sufficient resources to deal with demand this is a prerequisite to comply with quality standards. However PRV closely monitors changes and input regarding to quality standards as described in 21.16 and 21.25. Resources needed to deal with quality issues i.e. training or measures that slows down production, these resources are input to the system as described above in 21.14 a)

3. Management of administrative workload

21.15 Indicate how the following practices and procedures for handling search and examination requests and performing related functions such as data-entry and classification are implemented:

- (a) Effective control mechanisms regarding timely issue of search and examination reports to a quality standard as set by the respective Authority; and*
- (b) Appropriate control mechanisms regarding fluctuations in demand and backlog management.*

21.15

a) All search and examination requests are monitored by each director, using an alert system with internal time limits set 4 weeks prior to PCT time limits. Lists of requests and their internal time limit are presented on individual, group and directorate level. Priority data is displayed in order to give an alert in cases of requests concerning risk of delay. Corrective action is taken. There is a follow-up system with feedback reports on any late requests.

b) Demand and backlog data is monitored at individual/technical group level.

4. Quality assurance

21.16 The following are required quality assurance measures for timely issue of search and examination reports of a quality standard in accordance with the Guidelines. Indicate how the following are implemented:

- (a) An internal quality assurance system for self assessment, involving verification, validation and monitoring of searches and examination work:*
 - (i) for compliance with these Search and Examination Guidelines;*
 - (ii) for channelling feedback to staff.*
- (b) A system of measurement and collection of data and reporting. Show how the Authority uses the system to ensure the continuous improvement of the established processes.*
- (c) A system for verifying the effectiveness of actions taken to correct deficient S&E work, eliminate the causes, and to prevent issues from recurring.*

21.16

- a)
 - i) For all applications a quality control is made by another examiner according to a computer based checklist, including check of search and examination guidelines. The checklist provides information if the second examiner agrees disagrees or has doubts within a certain number of checked fields. The information is stored for statistical data and

feedback. However the examiners and in some cases a patent expert always meet and analyze the results before any written communication is forwarded.

As a complement to other quality assurance procedures, the process has been completed with a special procedure in the case the search results in only category "A" documents. The procedure involves consulting a patent expert and/or other technical expert going through the search strategy and parameters once again and if necessary doing complementary searching. The consultation and its measures are documented.

As a part of quality assurance procedures, the "patent expert board" suggests and carries out yearly spot checks of the patent process.

ii) Patent experts and the patent expert board provide feedback to staff both on individual applications and on statistical analyses on the results of the quality control.

b) As described above data from quality checks in all application is stored and analyzed to provide feedback and continuous improvement of the patent process. All non-conformities and suggestions are also separately analyzed and form input to patent experts and staff on quality issues as to always improve the process.

c) Non-conformities are always fed into a separate system that has functionality to force the elimination of causes and to prevent deficient work to recur.

5. Communication

21.17 Inter-Authority communication:

Provide the name, job title and contact details of the Authorities designated quality contact person who will take responsibility for:

- (a) helping identify and disseminate best practice among Authorities;*
- (b) fostering continual improvement; and*
- (c) providing for effective communication with other Authorities to allow for prompt feedback from them so that potential systemic issues can be evaluated and addressed.*

21.17 Quality Contact person:

Måns Marklund
Quality manager
mans.marklund@prv.se
+46 (0) 8 782 28 81

21.18 *Communication and guidance to users:*

Describe the system in place for monitoring and using customer feedback including at least the following elements:

- (a) *An appropriate system for
 - (i) *handling complaints and making corrections;*
 - (ii) *taking corrective and/or preventative action where appropriate; and*
 - (iii) *offering feedback to users.**
- (b) *A procedure for:
 - (i) *monitoring user satisfaction and perception; and*
 - (ii) *for ensuring their legitimate needs and expectations are met.**
- (c) *Clear, concise and comprehensive guidance and information to users (particularly unrepresented applicants) on the search and examination process, giving details of where it is to be found e.g. link to Authority's web site, guidance literature.*
- (d) *An indication of where and how the Authority makes its quality objectives publicly available for the users.*

- a)
 - i) General complaints on PRV concerning customer relations, fees, opening hours etc. is handled by our IT based customer feedback system. All complaints concerning the handling of applications and the performance of the work done within the patent process are handled by our Process owner (see organization in appendix). All complaints are carefully documented and an investigation is carried out in all cases. The investigation is led by the Director and the Patent expert of the involved directorate. Corrections are made by the responsible examiner.
 - ii) In case of preventive action needed the Process owner will set up a plan of action and the effectiveness of this plan will be checked at a later stage.
 - iii) The customer will get a report on the complaint based on the investigation that has been undertaken. In some cases, if the investigation shows that the SPRO has made an obvious mistake, we can refund fees.
- b)
 - i) Measurement of user satisfaction and perception is done by recurrent customer surveys every second year. PRV also document and measure any customer feedback from our customer feedback system. All feedback from customers is feed in to this system either by the customer, via a feedback forms on our website, or inputted to the systems by any employee according to specific instructions on customer feedback administration. PRV also holds customer meetings with representatives from industry, attorneys and inventors several times every year.
 - ii) Our management system includes targets for the amount of realized customer suggestions
- c) PRV issues guidance booklets on the application, search and examination procedures. See also www.prv.se
- d) See service commitments: <http://www.prv.se/en/About-us/Vision-and-mission/Service-commitments/>

21.19 Communication with WIPO and designated and elected Offices:

Describe how the Authority provides for effective communication with WIPO and designated and elected offices. In particular describe how the Authority ensures that WIPO feedback is promptly evaluated and addressed

21.19

PRV uses the EDI system for all communication with WIPO concerning applications. All feedback from WIPO, normally mail or email is forwarded to the PCT administrative group, and immediately evaluated and addressed. In case of Legal aspects the feedback is forwarded to the Legal section. The Legal section also has several contacts within WIPO as to easily clarify and address any feedback.

6. Documentation

21.20 Explanatory note: *The QMS of the Authority needs to be clearly described and implemented so that all processes in the Authority and the resulting products and services can be monitored, controlled, and checked for conformity. This is done in the documents that make up the Quality Manual of the Authority (see paragraph 21.21).*

(Note: This point is informative. No response is required by the template to paragraph 21.20)

21.21 *The documents that make up the Quality Manual serve to document the procedures and processes affecting the quality of work, such as classification, search, examination and related administrative work. In particular, the Quality Manual indicates where to find instructions on the procedures to be followed.*

For the purposes of this report indicate:

- (a) the documents making up a Quality Manual that have been prepared and distributed;*
- (b) the media on which it is supported (e.g. Internal Publication, Internet, Intranet); and*
- (c) document control measures taken e.g. version numbering, access to latest version*

21.21

PRV Quality Manual.

The Quality Manual of PRV is a document only to be found on our intranet, it consists of numerous links to the actual parts of our Intranet where the actual processes and procedures are described. Below is a brief description of the Manual and its contents, when tagged with "link" the headline has equivalence in one of our main links on the intranet (placed at the top menu)

a)

PRVs Business an overview.

A brief description of PRVs business and assigned tasks.

Words and Phrases

Explanations of words and phrases in the manual

§Main Processes

Explanation of PRVs main processes and how we use processes for describing our business

Start - link

Explanation on how you can personalize the start page of PRVs intranet.

News - link

Explanation on the news area on the intranet

Organization - link

Explanations concerning PRVs organization and organization chart, including responsibility and authority.

Management - link

- Economic

Explains the process of economic management

- Strategic

Explains the process of Strategic management (3-5 years)

- Operative

Explains the process of operational management (0-1 year)

VSAA-How we do it - link

-Processes

Design Processes

Patent Processes

National Process

PCT Process – description

- Laws and Rules
- Guidelines
 - Search and Examination Guidelines(WIPO Pdf)
- Working instructions
- Examiners work area
 - Electronic memo card
 - Quality control notes
 - Language and electronic translators
- Classification
- Flowcharts
- Manuals
- Glossary/Index

Support - link

Explains our support processes

My employment - link

Explains what kind of information is presented concerning employment i.e. salary, vacation etc

ISO 9001

Relates our quality management system to the ISO 9001:2008 claims.

b)Intranet

c) Advanced document control in the intranet platform keeps track of any changes and presents version numbering and indication on latest version etc.

21.22 Indicate whether the documents making up the Quality Manual include the following:

- (a) the quality policy of the Authority including a clear statement of commitment to the QMS from top management;
- (b) the scope of the QMS, including details of and justification for any exclusions;
- (c) the organizational structure of the Authority and the responsibilities of each of its departments;
- (d) the documented processes carried out in the Authority such as receipt of incoming applications, classification, distribution, search, examination, publication and support processes, and procedures established for the QMS, or references to them;
- (e) the resources available for carrying out the processes and implementing the procedures; and
- (f) a description of the interaction between the processes and the procedures of the QMS.

21.22

- a) Yes
- b) Yes
- c) Yes
- d) Yes
- e) Yes
- f) Yes

21.23 Indicate which types of records the Authority maintains, such as:

- (a) a definition of which documents are kept and where they are kept;
- (b) results of management review;
- (c) training, skills and experience of personnel;
- (d) evidence of conformity of processes, resulting products and services in terms of quality standards;
- (e) results of reviews of requirements relating to products;
- (f) the search and examination processes carried out on each application;
- (g) data allowing individual work to be tracked and traced;
- (h) records of QMS audits;
- (i) actions taken re. non-conforming products, e.g. examples of corrections;
- (j) actions taken re. corrective action;
- (k) actions taken re. preventative action; and
- (l) search process documentation as set out in Section 7.

21.23

- a) Yes, Intranet, Quality Manual
- b) Yes, Intranet, Management process
- c) Yes, Intranet,
- d) Yes, Intranet, Management process, Patent process
- e) Yes, Intranet, Internal reviews
- f) Yes, Intranet, Patent process, Application data support.
- g) Yes, Intranet, Application data support
- h) Yes, Intranet, Management process
- i) Yes, Intranet, separate system for non-conformities, Olivia
- j) Yes, Intranet, separate system for non-conformities, Olivia
- k) Yes, Intranet, separate system for non-conformities, Olivia
- l) Yes, Intranet, search process documentation system

7. Search process documentation

21.24 For internal purposes the Authority should document its search process.

The Authority should indicate

- (a) which of the following are included in this record:
 - (i) the databases consulted (patent and non patent literature);
 - (ii) the keywords, combinations of words and truncations used;
 - (iii) the language(s) in which the search was carried out;
 - (iv) the classes and class combinations searched, at least according to the IPC or equivalent;
 - (v) a listing of all search statements used in the databases consulted.
- (b) which other information relevant to the search itself is included in this record e.g. a statement of the subject of search; details of special relevance to internet searching; a record of documents viewed; on-line thesaurus, synonym or concept databases, etc.
(Explanatory note: The IA is requested to list other information it may collect to monitor and improve the search process)
- (c) which special cases are documented and whether records are kept denoting any:
 - (i) limitation of search and its justification
 - (ii) lack of clarity of the claims; and
 - (iii) lack of unity.

21.24

a)

i) Yes

ii) Yes

iii) Yes

iv) Yes

v) Search statements are partly listed if relevant to search results, full search history recording is available but not used.

b) Se appended print screens from PRV documentation tools.

c) Se appended print screens from PRV documentation tools.

8. Internal review

21.25 Explanatory note: The Authority should report on its own internal review arrangements. These reviews determine the extent to which it has established a QMS based on the model of Chapter 21 and the extent to which it is complying with the QMS requirements and the Search and Examination Guidelines. The reviews should be objective and transparent to demonstrate whether or not those requirements and guidelines are being applied consistently and effectively and should be undertaken at least once a year. With reference to point 21.08 of this template, the Authority may provide additional information on its internal review arrangements under this section if it so wishes.

21.26-21.28 These arrangements are reported according to this template in Section 1, above, at points 21.04 - 21.09. The Authority may provide additional information on further inputs to its internal reviews under this section, if it so wishes

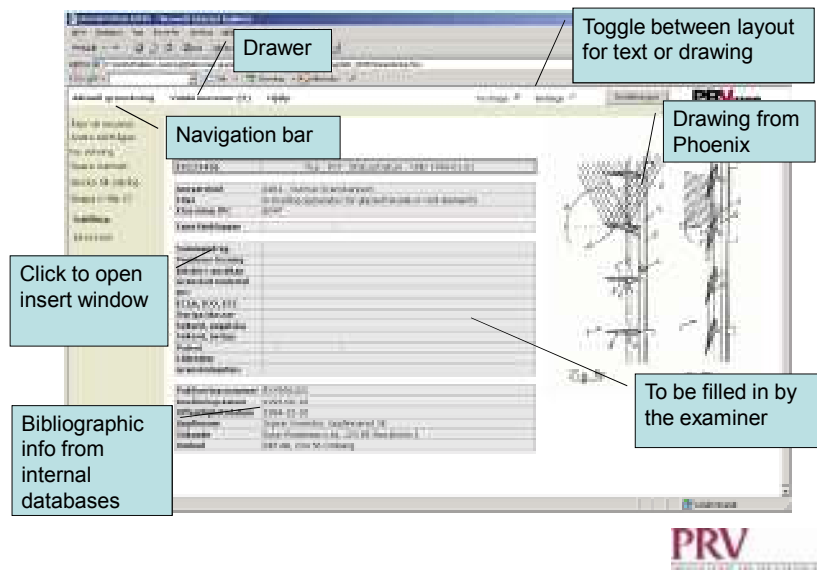
21.25 Reviews are frequently conducted by delegated officers, see point 21.09.

9. Arrangements for Authorities to Report to the MIA

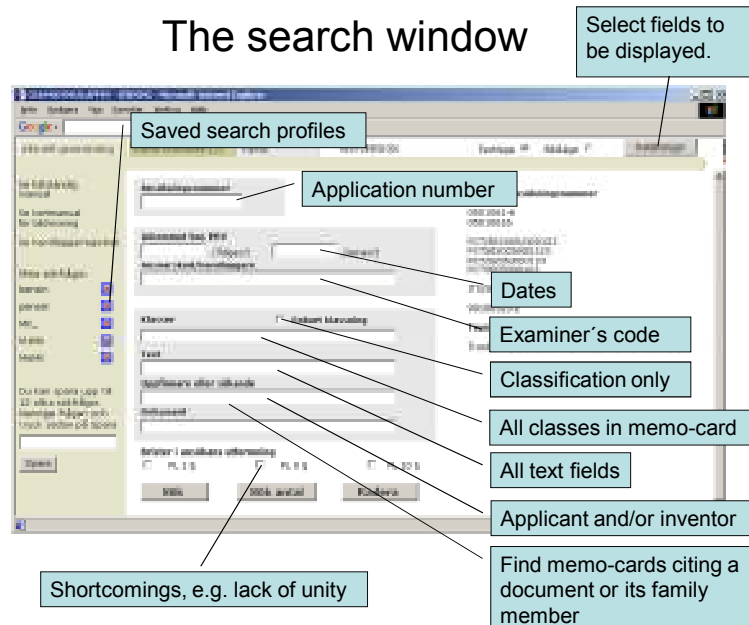
21.29 There are two stages in the reporting arrangements. The document up to this point relates to the initial report called for by paragraph 21.29. It will be supplemented annually by further reports in accordance with paragraph 21.30.

Appendix: Memo Card and Quality control software:

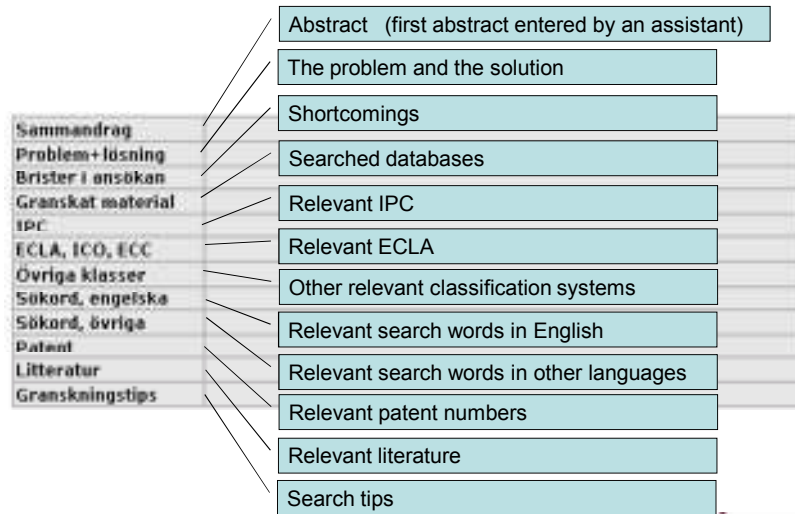
Memo card



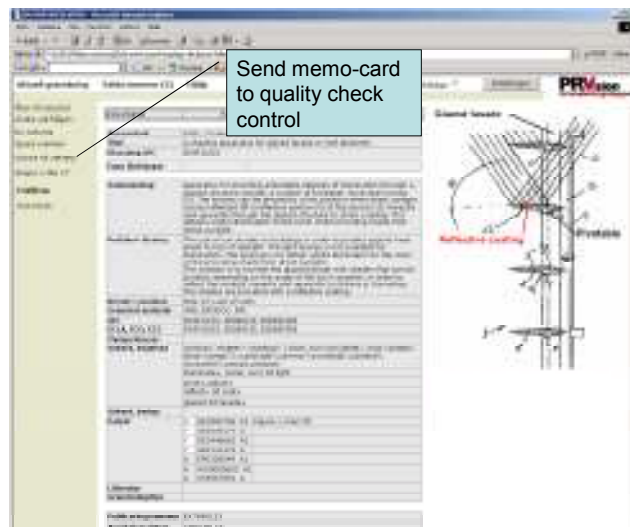
The search window

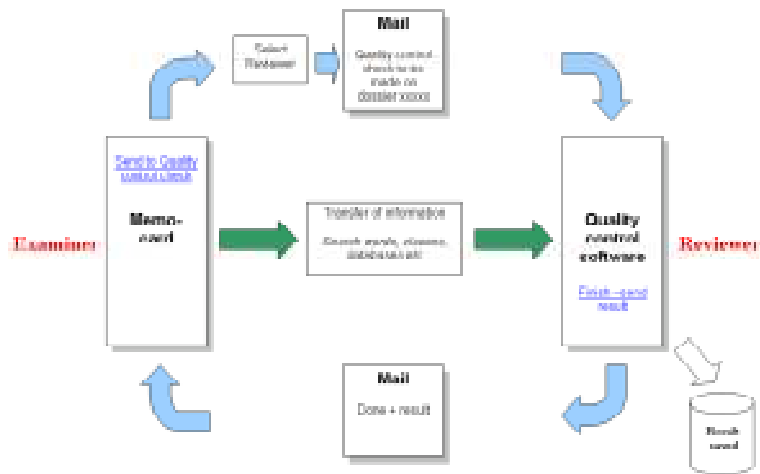


To be filled in by the examiner



Final memo-card





Quality control software

G=satisfactory
T=questionable
O=unsatisfactory

Blue text. Information transferred from memo-card.

Green text. Check of written opinion.

New version – two levels
E=ageed
D=discussion

The image shows a screenshot of a software application window titled "PRV - Myndighetens kvalitetskontroll". The window is divided into two main sections: "Sökning av patentansökan" (Search for patent application) on the left and "Utvärdering av patentansökan" (Evaluation of patent application) on the right. The left section contains a list of search criteria and filters, including "Är uppfinningen rätt klassificerad?" (Is the invention correctly classified?), "Är problemet tydligt beskrivet i ansökan?" (Is the problem clearly described in the application?), "Är kortkomma i ansökan kommenterade?" (Are shortcomings in the application commented on?), "Är relevanta tekniska lösningar sökt?" (Have relevant technical solutions been searched?), and "Är dokumenten rätt kategoriserade?" (Are the documents correctly categorized?). The right section contains a table for evaluation, with columns for "Ja" (Yes), "Nej" (No), and "Kommentar" (Comment). The table is currently empty. A vertical red banner on the left side of the screenshot reads "Protect your ideas". At the bottom of the screenshot, the text "Quality Control" is visible.

Protect your ideas

PRV - Myndighetens kvalitetskontroll

Sökning av patentansökan

Utvärdering av patentansökan

Är uppfinningen rätt klassificerad?

Has the application been correctly classified?

Är problemet tydligt beskrivet i ansökan?

Have shortcomings in the application been commented on?

Är relevanta tekniska lösningar sökt?

Has relevant material been searched?

Är dokumenten rätt kategoriserade?

Have the documents been correctly categorized?

Evaluation of the written opinion

Has novelty been correctly used?

Has problem-solution been correctly used?

Have all the claims been considered?

Have other shortcomings been commented on?

Style

Quality Control

[End of document]