

STANDARD ST.22

RECOMMENDATION FOR THE AUTHORIZING OF PATENT APPLICATIONS FOR THE PURPOSE OF FACILITATING OPTICAL CHARACTER RECOGNITION (OCR)

INTRODUCTION

1. This recommendation applies to patent applications submitted on paper or submitted electronically (e-filed) but having the text body of the application submitted in image form (e.g., PDF or TIFF images).
2. This Recommendation has been established so as to assist in the preparation of a patent application in a typewritten form suitable for the subsequent production of an electronic digitized record of the contents of the patent application by the use of Optical Character Recognition (OCR) equipment.
3. This Recommendation has been established based upon the experiences of various offices in the use of OCR equipment. It has been drawn up with the objective of achieving the lowest possible error rate in the step of automatic reading of the text of patent applications whilst, at the same time, still permitting efficient personal reading of the document. Note that this document does not provide detailed recommendations for the Japanese and Korean languages: the percentage of the number of full text electronic filings to the total number of filings by year is indeed above 90% in these countries, meaning that this Standard is not applicable for the Japanese and Korean languages in practice.
4. The primary aim of producing a digitized record of a patent application is to permit the easy publication of that application in a composed format using computer typesetting techniques and to thus enhance the presentation and value of patent documents to the advantage of all users. A further aim is to create a machine-readable database of the full text of a published document so that advantage can be taken at a later date of the possibilities offered by full text computer search.

DEFINITIONS

5. For the purposes of this Recommendation, the expression "Patent application" means applications for patents for invention, inventor's certificates, utility certificates, utility models, patents or certificates of addition, inventor's certificates of addition and utility certificates of addition.
6. A mathematical or chemical formula is said to be "complex" if it cannot be displayed as a linear sequence of characters, each character having an optional subscript or superscript attribute. A formula is notably complex if it contains nested subscript/superscripts or if it contains the sum, integral or product mathematical symbols.
7. A bounding box of a character/set of characters is the smallest axis-aligned rectangle which includes all parts of the character/set of characters.

8. The term "cursive" refers to a stylized form of handwriting where the letters in words are connected, making a word one single complex stroke. Fonts are said to be cursive if they are designed to resemble handwriting.

CREATION OF THE ORIGINAL

9. A patent application will often be prepared using word processing equipment. Experience has shown that the most efficient format that is to be used which would enable OCR equipment to be reliably used is that defined in the International Standard Organization (ISO) Standard 1073/II, the so-called OCR-B format.

PAPER SUPPORT IF FILED ON PAPER

10. To facilitate scanning, the paper support of the typed application should have the following characteristics:
 - (a) The paper should be strong, white and clean;
 - (b) The paper weight should lie between 70 and 120 gms/m²;
 - (c) The paper size should preferably be A4, viz. 210 mm x 297 mm or 8 1/2 by 11 inches (which is the de-facto North-American standard).
 - (d) Sheets should be free of creases, holes and should not be rolled.
 - (e) The paper should not be absorbent in order to avoid migration of the ink (for example when using an ink jet printer).

PAGE LAYOUT RECOMMENDATIONS

11. Double-sided printing should be avoided. If this is not possible, sufficiently opaque paper should be used to ensure clean recto/verso scanning.
12. The characters should be solid black on a white background.
13. A minimum margin of 2 centimeters should be present at the top, bottom and sides of each sheet, and one of 2.5 centimeters on the left side of each sheet. Any applicant's or representative's references should appear in the margin at the top. Please refer to Appendix I.
14. Line numbering should be avoided. If required, line numbers should be typed using Arabic characters in the left hand margin area, at least 1 cm outside of the box as shown in Appendix I. The font size of the line numbers should at least be 12 points.
15. Page numbering should be given by simply using Arabic characters without other delimiting characters. Page numbers should preferably be centered at the top or bottom of the sheet in the margin, as shown in Appendix I.
16. The description, the claims and the abstract should be typed starting each on a new page. Moreover, the first word printed on the first page of each of the three previously mentioned parts of the application should specify the corresponding part (in the language of the application); claims paragraph should be numbered sequentially. The format of the claims numbering should allow for a clean separation between the claim number and the claim text for each claim. Recommended formats are either to use Arabic numerals followed by a point or to use the word "Claim" –or the equivalent in the language of the patent application-,

followed by a space and the claim Arabic number, the following text of the claim being right indented with respect to the claim number of at least 1 cm in both cases.

17. Pages should be constituted of single column paragraphs (text paragraphs or paragraphs containing an embedded image).
18. Pages containing paragraphs should have a portrait orientation.
19. Landscape orientation should be avoided. It is acceptable only for pages containing embedded drawings or tables that would not fit in a portrait orientation.
20. Any page **should contain** only one direction of text.
21. Landscape pages should be turned 90 degrees counterclockwise for integration within the set of portrait pages.
22. It is recommended to avoid the use of **footnotes**, margin texts and headers **except as indicated in Paragraph 13 (line numbering) Paragraph 14 (page numbering) and for the inclusion of an applicant's file reference in the top left-hand corner of the margin area.**

PARAGRAPH LAYOUT RECOMMENDATIONS

23. It is recommended that tables, complex chemical formulae, complex mathematical formulae, images and drawings are separated from text paragraphs. It is advised that such items be surrounded by top and bottom blank margins of at least 1 cm that encompass the width of the page.
24. Images and drawings should at maximum be included in the "Drawings" section and referred to in the "Description" and "Claims" sections of the patent application.
25. Images and drawings should be in black and white (Grayscale images should be avoided as information is lost when scanning them or converting them to black and white). Figures should use clear lines that are enough thick to be well represented at a 300 dpi resolution.
26. Handwritten text paragraphs or annotations should be avoided. If required, they would be considered as embedded drawings and should follow the recommendation given in paragraph 23.
27. Typing should be done at one and a half line spacing.
28. Paragraphs should be separated by spacing that is at least twice as big as the intra-paragraph line spacing.
29. All characters within a paragraph line should have their baselines carefully aligned, [except for subscript and superscript characters as indicated in recommendation 34](#).
30. Justified text paragraphs should be avoided. If applied, the spacing between words should be at least as big as with unjustified text. Justified text may prevent the OCR systems to correctly identify the word boundaries in a paragraph.
31. When possible, word splitting by the use of hyphens should be avoided (for example, at the end of lines or table cells). This does not apply for languages that use compound nouns (for example the German language).

TABLE RECOMMENDATIONS

32. Only white background should be used.
33. Tables must have borders. The borders should be thicker than 1.5 points and be only solid lines.

FONT RECOMMENDATIONS

34. The minimal recommended font size is 12 points, 14 points being preferred. As a general recommendation, all characters of a paragraph should have the same font size.
35. Text paragraphs containing subscripts and superscripts should use a font size of at least 12 points and recommended 14 points (the bigger, the better). Ensure that the bounding box of the subscripts or superscripts characters intersects sufficiently the bounding box of the normal characters on the same line (This prevents the OCR procedures to put the subscripts/superscripts on different lines).

36. The recommended fonts are the following in order:
- (a) Monospaced family: OCR-B, Courier New, [Free Mono](#)
 - (b) Serif family: ITC Officina Serif, Times New Roman, [Free Times](#)
 - (c) Sans Serif family: Verdana, ITC Officina Sans , Arial, [Helvetica](#), [DejaVu Sans](#)
- However, [the Arial, Helvetica, DejaVu Sans, Free Times and Times New Roman](#) fonts are not recommended for applications containing chemical and/or mathematical formulae, as well as acronyms mixing letters and digits. For Chinese characters, the Song font is recommended.
37. The characters of the fonts should be well shaped, with no shadows. The spaces between characters should be large enough (narrow spacing should be avoided).
38. Narrow and cursive fonts should not be used.
39. Bold and italic styles should be avoided as much as possible.
40. Unusual ([non-standard /non-typical/ irregular](#)) characters should be avoided at maximum. If necessary, they [should](#) belong preferably to the standard Greek alphabet and to the symbol font (by order of preference). Characters that can not be found in the UNICODE range must not be used: those characters are recognized as embedded images by OCR engines and therefore make the recognized text difficult to read. Each office shall define and publish [its requirements](#) for the character set [which can be used](#) for the preparation of the [patent](#) applications.
41. Text should not be underlined. If required, it should be assured that the underline does not intersect the underlined characters bounding boxes.

RECOMMENDATIONS FOR NON-LATIN LANGUAGES

42. Within sections/pages of Patent Applications, the mixing of [Asian \(i.e. ideogram based\)](#) and [European \(i.e. Latin and Cyrillic alphabets\)](#) languages is problematic for the OCR procedures and should be avoided.

SCANNING RECOMMENDATIONS

43. Patent applications should be scanned either in black and white or grayscale.
44. The preferred resolution for the scanning is 300 dpi. Scanning at resolution lower than 300 dpis, even in grayscale, can result in poor quality documents published by offices since exchange of documents between offices and the publication processes often involve conversions to 300 dpi black and white TIFF group IV pages.
45. Scanned documents should be exported either to PDF or TIFF formats.

CORRECTIONS

46. Corrections of the text of an application should be done by reprinting the whole page. Proof correction marks -as for example specified in the international standard ISO 5776- are not accepted. Correction means like white correcting fluid, self adhesive strips of paper erasure or strikethrough are not accepted. Replacement pages shall not be sent by fax to the office using the 200 dpi resolution: pages should be sent physically or as an email attachment.

RECOMMENDATIONS FOR OFFICES

47. Patent offices should avoid altering the received pages before submitting them to scanning and OCR operations. For example, some current practices include stamping operations that may superimpose characters on pages, making text submitted by the applicant unreadable by OCR procedures. If stamps/changes have to be applied on the original pages, the office shall take measures to ensure that the changes only occur in the margins of the documents, as defined in Appendix I.

48. In the future, patent offices should avoid designing paper forms to handle the communication between the applicants and the office. According to past experience, designing and putting in place secured on-line forms systems is preferable to building systems to recognize paper forms. Anyway, the two following recommendations are made for the design of paper forms in the view of facilitating their recognition:

- Lines of small dots should not be used in forms to indicate to the user where text should be entered.
- Drop-out colors should be used for the character boxes (light gray)

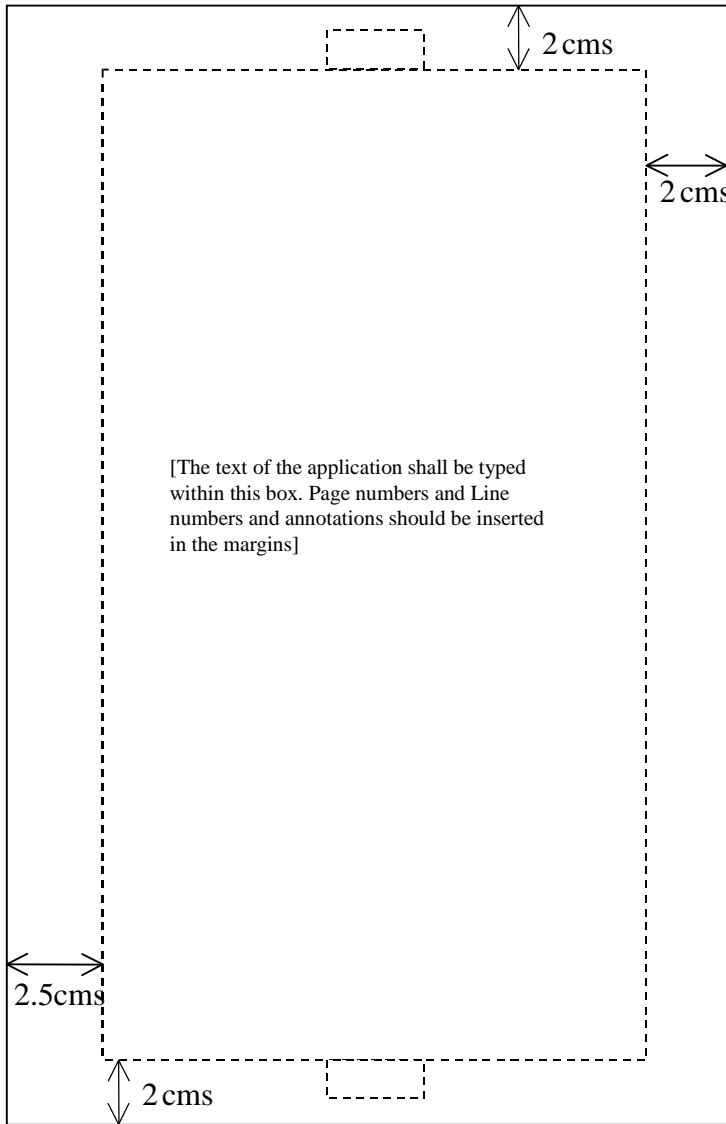
IMPLEMENTATION

49. It is recommended that Offices intending to start accepting or requesting the filing of patent applications typed in OCR format should publish full guidance in their Official Gazettes at regular intervals and in their Web sites, defining therein the exact character type or types permitted, and specifying the exact paper size allowable.

Examples

50. Examples of good and bad practices regarding OCR are reproduced in Appendix 2 to this recommendation. The examples show what should and what should not be done, along with a short explanation.

APPENDIX I



Original Size = A4

APPENDIX II
Examples of good and bad practices

You can find on this appendix good examples and bad examples of patent document pages with respect to the accuracy obtained when performing OCR operations on them.

Examples of good practices

Example 1: a good description page

WO 2006/111319

PCT/EP2006/003401

Projection exposure system, method for manufacturing a micro-structured structural member by the aid of such a projection exposure system and polarization-optical element adapted for use in such a system

5

The invention relates to a projection exposure system, in particular for micro-lithography. The invention further relates to a method for manufacturing a micro-structured component and a polarization-optical element for the extreme ultraviolet (EUV) region.

10

For highest possible precision of the optical image to be obtained in complicated optical instruments such as a projection exposure system, the influence of the polarization of the light must be considered or, respectively, the polarization must be influenced specifically. For example, in particular

15

in case of great incidence angles, polarization effects occur in the mirror systems, which projection exposure systems in the EUV region are based on, for lack of suitable transparent materials. These polarization effects are in particular due to the varying reflectivity of the mirrors for s-polarized and p-polarized light and can give rise to imaging errors or other undesired

20

effects. Efforts have been made to measure possible polarization effects in the individual components of projection exposure systems.

For example, EP 1 306 665 A2 discloses an optical instrument for measuring polarization-dependent properties which comprises a light source in the

25

EUV or X-radiation region and a rotatable polarizer. The polarizer is substantially comprised of a set of mirrors that reflects the incident light at least three times. The mirrors are arranged in such a way that the optical axes of the incident and emergent light are on the same straight line.

CLAIMS

1. A sports or games apparatus (10), characterized in that it comprises a flexible grid (11) of rectangular shape, which has two base sides (12) and two height sides (13), and is formed from a plurality of grid elements (20, 30, 40), in which the said grid elements comprise a pair of rigid bars (20) forming respectively the said two height sides of the grid, capable of being attached to corresponding support structures (S); a pair of elastic base cords or tapes (30), forming respectively the said two base sides of the grid, with their ends (31) attached to the rigid bars; and a plurality of elastic grid cords or tapes (40), the ends of each of the said elastic grid cords or tapes being attached to another two corresponding grid elements, in such a way that, in an installed condition of the said apparatus, in which the said rigid bars are attached to the said support structures in such a way as to bring the said elastic base cords or tapes and the said elastic grid cords or tapes into tension, the said grid elements are positioned so as to form a grid with a rectangular mesh.
2. An apparatus according to Claim 1, in which the ends (31, 41) of each elastic base cord or tape (30) and of each elastic grid cord or tape (40) are movable along the direction of extension of the corresponding grid element to which they are attached.
3. An apparatus according to Claim 2, in which the ends (31, 41) of each elastic base cord or tape (30) and of each elastic grid cord or tape (40) are bent back to form a noose and attached to themselves, and the corresponding grid elements to which they are attached in a movable way are inserted into the corresponding nooses (42) formed by them.
4. An apparatus according to any one of the preceding claims, in which at least one elastic grid cord or tape (40) comprises at least one intermediate point (43) attached to another elastic grid cord or tape (40).
5. An apparatus according to Claim 4, in which at least one intermediate point is movable along the direction of extension of the corresponding elastic grid cord or tape (40) to which it is attached.

All recommendations are met: margins, a standard font (Times New Roman), a good font size, no line numbers, limited use of bold, no italics, no underlined text, **claims numbering adequate and well separated from the claims texts....**

Example 3: a good complex description page

WO 2006/102655

PCT/US2006/011076

[0134] When performing the first iteration of step S9-4, the values of D_n , A_n , D_b and A_b are the values previously calculated at step S7-2, while all values of λ_n are zero.

[0135] The equations used by solver 244 at step S9-6 comprise the following in this embodiment:

5

$$\text{if } (\lambda_{x,y,z-\max}^{n+1})_{ang \& lin} < 0 \text{ then } \lambda_{x,y,z-\max}^{n+1} = 0 \quad (46)$$

$$\text{if } (\lambda_{x,y,z-\min}^{n+1})_{ang \& lin} > 0 \text{ then } \lambda_{x,y,z-\min}^{n+1} = 0 \quad (47)$$

$$\lambda_{lin}^{n+1} = \lambda_{lin-\min}^{n+1} + \lambda_{lin-\max}^{n+1} \quad (48)$$

$$\lambda_{ang}^{n+1} = \lambda_{ang-\min}^{n+1} + \lambda_{ang-\max}^{n+1} \quad (49)$$

10 [0136] The equations used by solver 244 at step S9-8 comprise the following in this embodiment:

$$D_a^{n+1} = D_a^n + L \frac{(\lambda_{lin}^{n+1} - \lambda_{lin}^n)}{m_a} \quad (50)$$

$$A_a^{n+1} = A_a^n + I_a^{-1}[r_a^s]L(\lambda_{lin}^{n+1} - \lambda_{lin}^n) + I_a^{-1}T(\lambda_{ang}^{n+1} - \lambda_{ang}^n) \quad (51)$$

$$D_b^{n+1} = D_b^n - L \frac{(\lambda_{lin}^{n+1} - \lambda_{lin}^n)}{m_b} \quad (52)$$

$$A_b^{n+1} = A_b^n - I_b^{-1}[r_b^s]L(\lambda_{lin}^{n+1} - \lambda_{lin}^n) - I_b^{-1}T(\lambda_{ang}^{n+1} - \lambda_{ang}^n) \quad (53)$$

15 [0137] Referring again to Figure 7, at step S7-6, solver 244 performs a convergence test.

In this embodiment, solver 244 performs processing to determine whether the values of λ calculated for the current iteration differ from the values of λ calculated for the previous iteration by more than a predetermined threshold, in accordance with the following equation:

$$\sum_{\lambda} \frac{(\lambda^{n+1} - \lambda^n)^2}{\lambda^{n2}} \leq \text{Threshold} \quad (54)$$

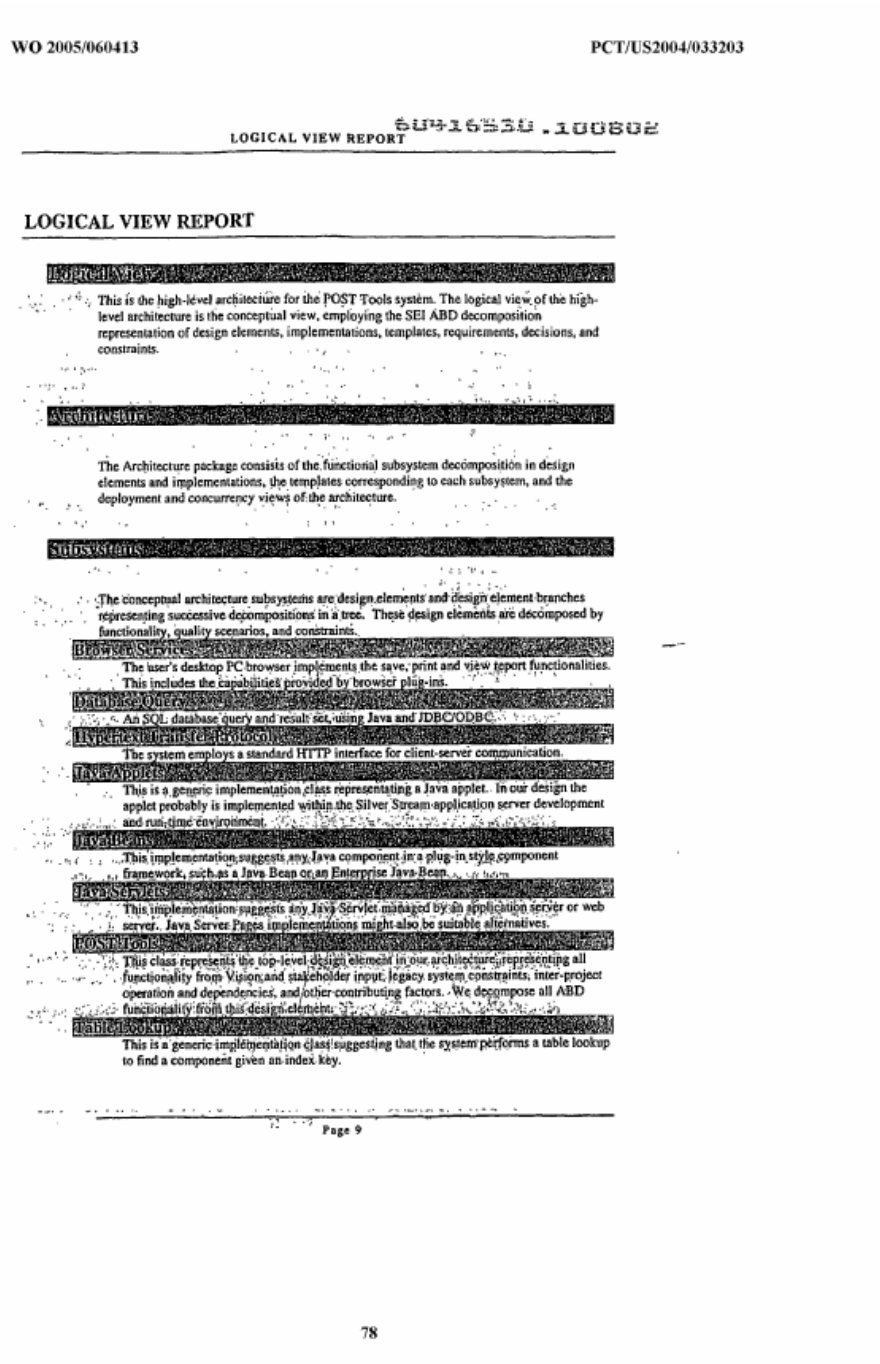
20 [0138] In this embodiment, the threshold employed in Equation (54) is set to 10^{-4} .

[0139] At step S7-8, solver 244 determines whether a predetermined number of iterations of the processing at steps S7-2 to S7-8 have been performed. In this embodiment, solver 244 determines whether 50 iterations have been performed.

The text paragraphs do not contain unusual Mathematical characters. The Mathematical formulae are correctly embedded allowing an easy segmentation of the embedded images by the OCR engines. A possible result of the segmentation is shown in blue.

Examples of bad practices

Example 1: a poor quality page with many deficiencies



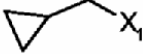
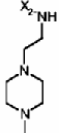
Recommendation 10 is not respected (the page was probably submitted by fax at 200 dpi to the office - see the noise- and some text lies on heavy gray backgrounds). Recommendations 13 and 47 are not respected: a reference number (60411530.100802) is stamped within the body of the page (it should be in the margins). The page numbering is incorrect (should be 9, not "page 9" see recommendation 15). Last but not least, the font size is too small (recommendation 34). Such pages should ideally be not accepted by offices and replacement pages requested (this page is impossible to OCR correctly).

REVENDEICATIONS

1. Dispositif d'usinage (D) du type de celui associant une machine-outil d'usinage (100) à un dispositif porte-pièce (200) équipé d'un axe de mise en mouvement de rotation transversal (A) par rapport à l'axe de plongée (Z), CARACTÉRISÉ PAR LE FAIT QUE le dispositif porte-pièce (200) est constitué par un bâti (210) supportant deux paliers de guidage (210 et 230) en rotation selon ledit axe de rotation transversal (A), la structure formée par le bâti (210) et les deux paliers (220 et 230) étant fermée par la pièce à usiner (300) dont les extrémités viennent se fixer auxdits paliers (310 et 220), la pièce à usiner (300) étant une pièce longue du type de celle comportant des surfaces à usiner concentrées à ses deux extrémités ET PAR LE FAIT QUE la machine-outil (100) est du type de celle assurant la mise en mouvement de deux coulants porte-outil indépendants (110 et 120) de façon à ce que les usinages des deux extrémités de la pièce (300) soient réalisés par un coulant différent.
2. Dispositif d'usinage (D) selon la revendication 1, CARACTÉRISÉ PAR LE FAIT QUE chaque palier (220 et 230) comprend et guide un plateau tournant (221 et 231) équipé d'un moyen de mise en mouvement motorisé, la rotation des deux plateaux (221 et 231) étant synchronisée.
3. Dispositif (D) selon la revendication 2, CARACTÉRISÉ PAR LE FAIT QUE chaque plateau (220 et 230) est équipé de deux appuis (410, 420 et 510, 520) pour accueillir et maintenir en position l'extrémité de la pièce (300).
4. Dispositif (D) selon la revendication 1, CARACTÉRISÉ PAR LE FAIT QUE le bâti (210) du dispositif porte-pièce (200) est lui-même monté mobile en rotation selon un axe (B) perpendiculaire à l'axe (A) de rotation défini par les deux paliers (220 et 230) qu'il supporte.
5. Procédé d'usinage d'une pièce longue (300) du type de celle comportant des surfaces à usiner concentrées à

Recommendation 12 is not respected. The page needs to be filtered to attempt to remove the noisy background before submitting it to an OCR operation. If OCRed as-is, the obtained text is unreadable.

Example 3: a page with faint characters

#	R2	A	UV max [nm]:	MS (ESI) (M+H) ⁺	
25			305, 350	476	Trihyc 1,41 ((m, 2f (m, 1f

Beispiele 26-40

Die folgenden Verbindungen sind über ein analog
beschrieben, hergestellt. Die Herstellung des Benz

5 beschrieben. Das für die Darstellung des Amids ei

A small area of the page is zoomed to show the characters: the color of the original text is probably gray, resulting after the scanning in 300dpi black and white in characters which are not solid. As a result, the accuracy of the OCRed text is poor (Recommendation 12 is not respected).

Example 4: a page with handwritten text

TITLED : JIG HEAD SWAY BAR

BACK GROUND

IN THE ART OF FISHING THERE IS A PIECE
OF TACKLE KNOWN AS A PIVOT-HEAD JIG WHICH
USES SPECIALIZED OR SPECIFICALLY SHAPED HOOKS TO
PROVIDE AN ACTION PRODUCING LURE COMBINATION.
MY INVENTION THE SWAYBAR ALLEVIATES THIS
NEED FOR SPECIAL HOOKS BY BEING ABLE
TO BOTH SUPPORT THE JIG HEAD AND ALLOW
FOR CONNECTION OF OTHER REQUIRED TACKLE

As to be expected, the text obtained by OCRing this page is unreadable. Offices should request typewritten text to ensure a minimum publication quality.

Example 5: a page with a non recommended layout and other deficiencies

relation to the determination of AN by FTIR spectroscopy

This concept is illustrated in Figure 1 for AN, the BN analysis being analogous but using a different reagent. Differential spectroscopy is then used to eliminate the spectral contributions from the base oil and any additives and/or contaminants and breakdown products present in the oil that may spectrally interfere with the measurement of the signal from the reaction product. This is achieved by treating a portion of the sample with a blank reagent, this portion effectively serving as a reference oil. Figure 2 illustrates the general analytical protocol.

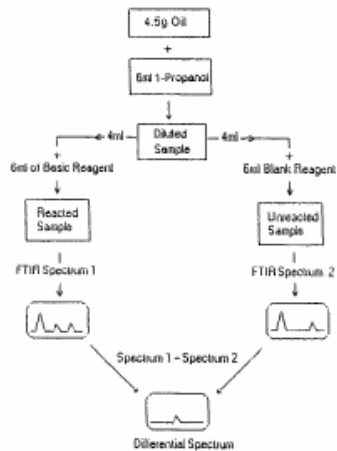


Figure 2. Analytical protocol for the determination of AN by FTIR spectroscopy.

In this procedure, the sample is first diluted with an innocuous solvent (1-propanol), then split and treated with a

reactive and a blank reagent to produce two samples for spectral analysis. Since these two samples are the same except for the reaction products, subtraction of their spectra leaves only the spectral contribution related to AN.

The COAT AN/BN Analyzer

The COAT AN/BN Analyzer has been designed and programmed to automate AN/BN analyses based on the concepts laid out above. Figure 3 illustrates key components of the COAT AN/BN Analyzer: an FTIR spectrometer, a sample handling accessory, an autosampler, and the computer that controls the system.

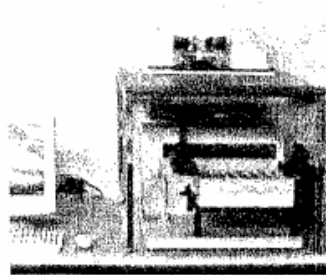


Figure 3. The COAT AN/BN Analyzer and its key components

The compact nature of the sample handling system is made possible by the dilution of the sample in the analytical protocol (Figure 2), allowing a micropump to be substituted for the peristaltic pump employed in most FTIR used oil analyzers. The resulting low viscosity of the sample dramatically

This page does not respect recommendation 17 (single column formatting), uses italic and bold fonts (against recommendation 39), has manual corrections performed after printing (against recommendation 46). The left-right justification of the paragraph is also not recommended (recommendation 30), although in this case, this would not have negative effects on the OCR since the words are still sufficiently separated by white spaces. Recommendation 27 is also not respected (one and an half line spacing).

Example 6: a page with line numbers too small

WO 2004/110497

PCT/US2004/013820

5 [0028] Figs. 9A-9B are plots showing the percent of mitomycin C released from liposomes comprised of HSPC/mPEG-DSPE/lipid-DTB-mitomycin C (Fig. 9A) and HSPC/cholesterol/mPEG-DSPE/lipid-DTB-mitomycin C (Fig. 9B) as a function of time of incubation in the presence of cysteine at concentrations of 150 μ M (closed symbols) and at 1.5 mM (open symbols);

10 [0029] Fig. 10 is a plot of growth rate of M109 cells, expressed as a percentage based on growth of M109 cells in the absence of drug and cysteine, as a function of mitomycin C amount, in nM, for free mitomycin c (open triangles), liposomes comprised of HSPC/mPEG-DSPE/lipid-DTB-mitomycin C (closed squares), and liposomes comprised of HSPC/cholesterol/mPEG-DSPE/lipid-DTB-mitomycin C (open circles);

15 [0030] Fig. 11A is a plot of growth rate of M109 cells, expressed as a percentage based on growth of M109 cells in the absence of drug or cysteine, as a function of mitomycin C concentration in nM. Shown are cells treated mitomycin C in free form (open triangles) and with mitomycin C in free form plus 1000 μ M cystein (closed triangles). Also shown are cells treated with the liposome formulation comprised of HSPC/PEG-DSPE/lipid-DTB-mitomycin C (open circles) and with the liposome formulation with additional cysteine added at concentrations of 150 μ M (open diamonds), 500 μ M (closed circles) and 1000 μ M (open squares);

20 [0031] Fig. 11B is a plot of growth rate of M109 cells, expressed as a percentage based on growth of M109 cells in the absence of drug or cysteine, as a function of mitomycin C concentration in nM. Shown are cells treated mitomycin C in free form (open triangles) and with mitomycin C in free form plus 1000 μ M cysteine (closed triangles). Also shown are cells treated with the liposome formulation comprised of HSPC/cholesterol/mPEG-DSPE/lipid-DTB-mitomycin C (open circles) and with the liposome formulation with additional cysteine added at concentrations of 150 μ M (open diamonds), 500 μ M (closed circles) and 1000 μ M (open squares);

25 [0032] Fig. 12 is a plot showing the percent increase in cytotoxicity (as determined by $(IC50_{no\ cysteine}/IC50_{cysteine}) \times 100$) of free mitomycin C (closed squares), mitomycin C associated with liposomes comprised of HSPC/cholesterol/mPEG-DSPE/lipid-DTB-mitomycin C (closed circles), and liposomes comprised of HSPC/mPEG-DSPE/lipid-DTB-mitomycin C (open triangles) to M109 cells *in vitro* at various concentrations of cysteine;

30 [0033] Fig. 13A is a plot showing the concentration of mitomycin C in the blood of

Line numbers cause problems to the OCR engines for several reasons (recommendation 14):

- they may not be aligned with the lines they correspond to, leading to baseline detection defaults
- they could be too small, leading in recognition errors that would prevent the XML extraction procedures to remove them correctly from the text body of the page.
- They could be misplaced within the body text area of the page, or in the margins but too close to the body text area and as a result will appear inside the text stream exported by the OCR operations.

In this example, they are too small.

Subscript characters are also too small in this example (recommendation 35).

Example 7: a page containing several directions of text

WO 2005/081642

PCT/JP2005/003688

Table 11 (continued-2)

	Saponification degree	Amount in retardation-controlling agent solution (mass parts)				Amount in UV absorber solution (mass parts)					Mixing ratio of solutions				
		Retardation-control agent A-2	Retardation-control agent A-12	Retardation-control agent B	Retardation-control agent C	Retardation-control agent D	UV absorber A	UV absorber B	UV absorber C	UV absorber D	UV absorber E	UV absorber F	Cellulose acetate solution	Matting agent solution	Retardation-controlling agent solution
This invention			6	14							15	94.6	1.2	6.2	1.3
This invention		3	3	14							15	94.6	1.2	7.0	3.2
This invention		5	5	10							15	94.6	1.2	6.2	0.8
This invention	59.8		5		15	4.8	10.2					94.6	1.2	6.2	0.8
This invention			10		10	4.8	10.2					94.6	1.2	6.2	0.8
This invention					15	4.8	10.2					94.6	1.2	6.2	0.8
Comparative example	60.9	10	10									94.6	1.2	6.6	0
Comparative example	60.5			20								94.6	1.2	4.1	0
Comparative example	60.9								5	10		94.6	1.2	0	6.3
Comparative example	60.8	10	10			10.5	4.5					94.6	1.2	7.1	0.8
Comparative example	60.8	10	10			10.5	4.5					94.6	1.2	7.1	0.8

This example does not respect recommendation 20.

One of the limitation of the best OCR engines available today is that they can read only one direction of text in one page (A preprocess of the page is to detect the main text orientation of the page). As a result, all the words that are not in the main text direction are ignored. It is of course acceptable to have in a page a landscape table or even a main landscape text with portrait annotations in the margins (page number, application number and so on).

Example 8: a page with mixed embedded mathematical formulae and text

$$\Delta \mathbf{L} = \frac{\hbar}{2} - \mathbf{r} \times e\mathbf{A} \quad (33)$$

$$= \left[\frac{\hbar}{2} - \frac{e\phi}{2\pi} \right] \hat{z} \quad (34)$$

In order that the change of angular momentum, $\Delta \mathbf{L}$, equals zero, ϕ must be $\Phi_0 = \frac{\hbar}{2e^2}$,

the magnetic flux quantum. The magnetic moment of the electron is parallel or

- 5 antiparallel to the applied field only. During the spin-flip transition, power must be conserved. Power flow is governed by the Poynting power theorem,

$$\nabla \cdot (\mathbf{E} \times \mathbf{H}) = -\frac{\partial}{\partial t} \left[\frac{1}{2} \mu_0 \mathbf{H} \cdot \mathbf{H} \right] - \frac{\partial}{\partial t} \left[\frac{1}{2} \epsilon_0 \mathbf{E} \cdot \mathbf{E} \right] - \mathbf{J} \cdot \mathbf{E} \quad (35)$$

- Eq. (36) gives the total energy of the flip transition which is the sum of the energy of reorientation of the magnetic moment (1st term), the magnetic energy (2nd term), the electric energy (3rd term), and the dissipated energy of a fluxon treading the orbitsphere (4th term), respectively,

$$\Delta E_{\text{mag}}^{\text{spin}} = 2 \left(1 + \frac{\alpha}{2\pi} + \frac{2}{3} \alpha^2 \left(\frac{\alpha}{2\pi} \right) - \frac{4}{3} \left(\frac{\alpha}{2\pi} \right)^2 \right) \mu_B B \quad (36)$$

$$\Delta E_{\text{mag}}^{\text{spin}} = g \mu_B B \quad (37)$$

- 15 where the stored magnetic energy corresponding to the $\frac{\partial}{\partial t} \left[\frac{1}{2} \mu_0 \mathbf{H} \cdot \mathbf{H} \right]$ term increases, the stored electric energy corresponding to the $\frac{\partial}{\partial t} \left[\frac{1}{2} \epsilon_0 \mathbf{E} \cdot \mathbf{E} \right]$ term increases, and the $\mathbf{J} \cdot \mathbf{E}$ term is dissipative. The spin-flip transition can be considered as involving a magnetic moment of g times that of a Bohr magneton. The g factor is redesignated the fluxon g factor as opposed to the anomalous g factor. Using $\alpha^{-1} = 137.03603(82)$, the calculated value of $\frac{g}{2}$ is 1.001 159 652 137. The experimental value [23] of $\frac{g}{2}$ is 1.001 159 652 188(4).



1.G. SPIN AND ORBITAL PARAMETERS

- The total function that describes the spinning motion of each electron orbitsphere is composed of two functions. One function, the spin function, is spatially uniform over the orbitsphere, spins with a quantized angular velocity, and gives rise to spin angular momentum. The other function, the modulation function, can be spatially uniform—in which case there is no orbital angular momentum and the magnetic moment of the electron orbitsphere is one Bohr magneton—or not spatially uniform—in which case there is orbital angular momentum. The modulation function also rotates with a quantized angular velocity.

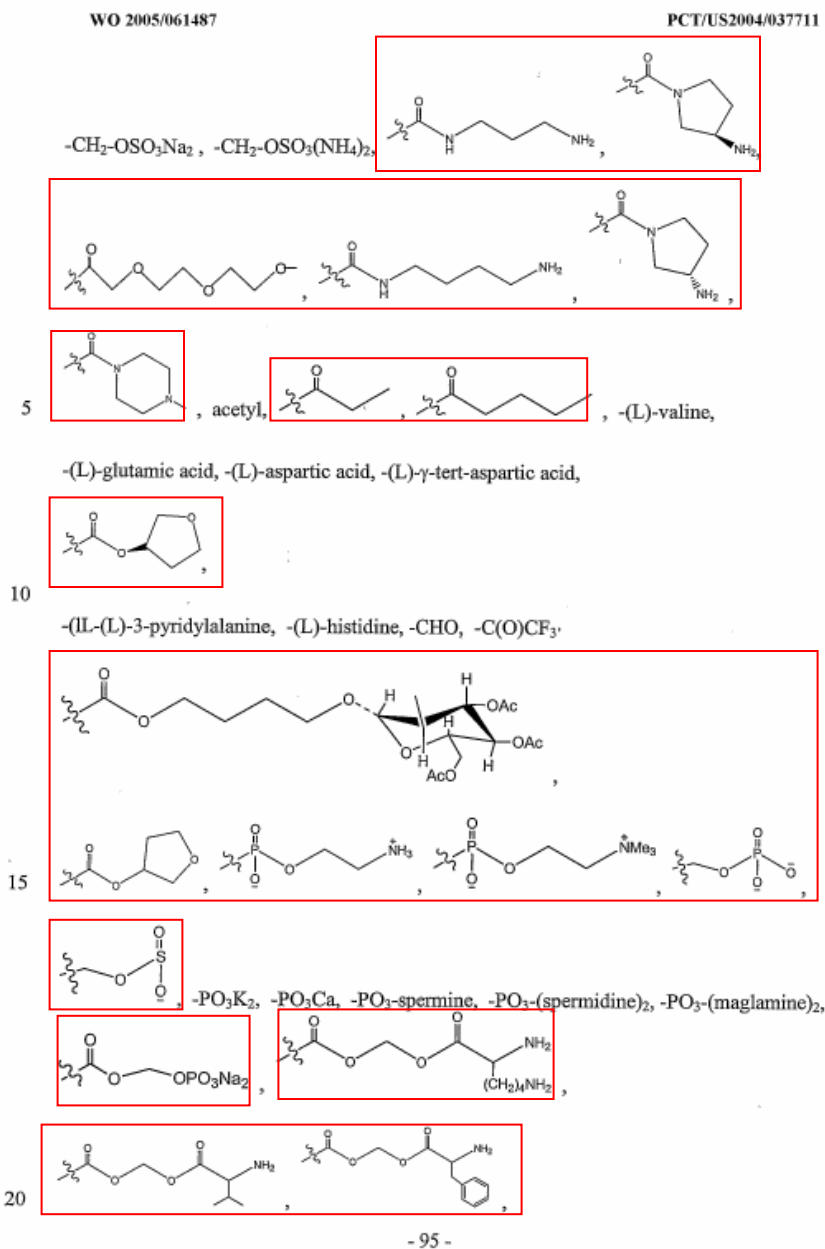
The spin function of the electron corresponds to the nonradiative $n = 1, \ell = 0$

This example does not respect recommendations 23. The OCR engine is not able to separate correctly the text and the formulae (see the result of a manual segmentation of the formulae in red: the embedded formulae even intersect).

As a general comment, in this example, the text and the formulae are too dense for a good recognition: recommendations 27 and 28 are also not respected.

This example also uses unusual characters: Greek symbols can be used even if they increase the recognition difficulty of the page (see recommendation 40). However, it is highly unrecommended to combine italics, bold or underlined fonts with unusual characters (recommendation 39).

Example 9: a page with mixed embedded chemical formulae and text



This example does not respect recommendations 23. You can find in red one expected result of the drawings segmentation (done manually). This segmentation has no chance to be performed correctly by an OCR engine since the formulae are too close to the surrounding text.

Example 10: a page with subscript characters too small

WO 2005/110416

PCT/US2005/015897

R₁ is hydrogen, C₁-C₆alkyl, C₂-C₆alkenyl, C₂-C₆alkynyl, C₁-C₆alkoxy, C₁-C₆haloalkyl, C₁-C₆haloalkoxy, (C₂-C₆cycloalkyl)C₀-C₄alkyl;

R₂ is selected from alkoxy, cycloalkoxy, phenyl, 4- to 7-membered heterocycles, -(CH₂)₄phenyl, -O(CH₂)₄pyridyl, -E-(CR_AR_B)_n-Q, and Q, each of which is substituted with between 0 and 3 substituents selected from halogen, cyano, hydroxy, oxo, (CR_AR_B)₂-T, C₁-C₆alkyl, C₁-C₆alkoxy, C₁-C₆haloalkyl, C₁-C₆haloalkoxy, mono- and di-(C₁-C₆alkyl)amino, (C₁-C₆alkyl)((CR_AR_B)₂-T)amino, benzyl, S(O)_n(C₁-C₆alkyl), α,ω-C₁-C₆alkylene, α,ω-C₁-C₆alkyleneoxy, α,ω-C₁-C₆alkylenedioxy, -E-(CH₂)_n-Q, and Q;

T is CO₂H, CONH₂, C₁-C₆alkoxycarbonyl, mono- or di-(C₁-C₆alkyl)aminocarbonyl, SO₂H, SO₂NH₂ or SO₂(C₁-C₆alkyl);

j is an integer ranging from 0 to 6;

Q is a saturated heterocyclic ring comprising between 4 and 7 ring members, in which the point of attachment is a carbon or nitrogen atom;

E is O, NR_D, or a single covalent bond;

R₃ and R₄ are independently chosen from hydrogen, halogen, hydroxy, C₁-C₆alkyl, C₁-C₆alkenyl, (C₂-C₆cycloalkyl)C₀-C₄alkyl and C₁-C₆alkoxy; and

Ar is phenyl which is mono-, di-, or tri-substituted; or 1-naphthyl, 2-naphthyl, pyridyl, pyrimidinyl, pyrazinyl, pyridiziny, thienyl, thiazolyl, pyrazolyl, imidazolyl, tetrazolyl, oxazolyl, isoxazolyl, pyrrolyl, furanyl, indolyl, indazolyl, or triazolyl, each of which is optionally mono-, di-, or tri-substituted.

Yet other compounds of Formula VIII include those compounds in which the group designated:



is chosen from naphthyl, tetrahydronaphthyl, benzofuranyl, benzodioxolyl, indanyl, indolyl, indazolyl, benzodioxolyl, benzo[1,4]dioxanyl and benzoxazolyl, each of which is substituted with from 0 to 3 substituents independently chosen from R₄.

Certain compounds of Formula IX include those in which

Ar is mono-, di-, or tri-substituted phenyl, which phenyl group is substituted with one to three substituents independently chosen from hydroxy, halogen, cyano, amino, nitro, -COOH, aminocarbonyl, -SO₂NH₂, C₁-C₆alkyl, C₁-C₆alkenyl, C₁-C₆alkynyl, C₁-C₆haloalkyl, C₁-C₆aminoalkyl, C₁-C₆hydroxyalkyl, C₁-C₆carboxyalkyl, C₁-C₆alkoxy, C₁-C₆haloalkoxy, C₁-C₆alkylthio, C₁-C₆alkanoyl, C₁-C₆alkanoyloxy, C₂-C₆alkanone, C₁-C₆alkyl ether, mono- or di-(C₁-C₆alkyl)aminoC₀-C₄alkyl, -NHC(=O)(C₁-C₆alkyl), -N(C₁-C₆alkyl)C(=O)(C₁-C₆alkyl), -NHS(O)_n(C₁-C₆alkyl), -(C₁-C₆alkyl)C(=O)NH₂, -(C₁-C₆alkyl)C(=O)NH(C₁-C₆alkyl), -(C₁-C₆alkyl)C(=O)NH(C₁-C₆alkyl)(C₁-C₆alkyl), -S(O)_n(C₁-C₆alkyl), -S(O)_nNH(C₁-C₆alkyl), -S(O)_nN(C₁-C₆alkyl)(C₁-C₆alkyl) and Z; or

This is a typical example where the subscripts characters are too small to allow for an accurate recognition. This phenomenon is particularly recurrent for patents in the chemistry field.

Example 11: a page with badly formatted tables

Table D

Other compounds of the invention result from selecting appropriate features from the table of possible features below. For example, compound A77 results from the following selections: none-morpholino-aryl-OCH₂(CO)-piperazine-CH₃.

5

Left-hand substituent	Left-hand ring	Aryl or heteroaryl	Ring substituent	Nitrogen feature	Right-hand substituent
CH3	morpholino	aryl	OCH2	NHM	alkyl
isopropyl	piperazine	thiophene	OCH2(CO)	NMM	alkoxy
CH3CH2O(CO)CH2			SO2	morpholino	alcohol
none			OCH2(CO)OCH2	piperazine	substituted amine
				piperidine	acid
				pyrazole	ester
				pyrrolidine	CH ₂ CH ₂ OCH ₃
					CH ₂ CH ₂ OH
					CH ₂ NH ₂
					CH ₂ NHCH ₂ CH ₂ CH ₃
					CH ₂ NHCH ₃
					CH ₂ NHCHCH ₃ CH ₃
					CH ₃
					CHCH ₂ CH ₃
					COOCH ₂ CH ₃
					none

Table E

Other compounds of the invention result from selecting appropriate features from the table of possible features below. For example, compound B3 results from the following selections: none-morpholino-aryl-CH₂-piperazine-CH₂CH₂OH.

10

Left-hand substituent	Left-hand ring	Aryl or heteroaryl	Ring substituent	Nitrogen feature	Right-hand substituent
CH3	morpholino	aryl	CH2	NHM	alkyl
isopropyl	piperazine	thiophene	CH2CH2	NMM	alkoxy
CH3CH2O(CO)CH2			CH2CH2CH2	morpholino	alcohol
none			CH2CH2CH2CH2	piperazine	substituted amine
				piperidine	acid
				pyrazole	ester
				pyrrolidine	CH ₂ CH ₂ OCH ₃
					CH ₂ CH ₂ OH
					CH ₂ NH ₂
					CH ₂ NHCH ₂ CH ₂ CH ₃
					CH ₂ NHCH ₃
					CH ₂ NHCHCH ₃ CH ₃
					CH ₃

In this example, the table boundaries are missing (against recommendation 33). As a result, the OCR engine will try to recognize contents of the tables as paragraph text. This leads to several other problems:

- The font size of the characters in the tables is too small (recommendations 34 and 35)
- The baselines of the column headings are mixed (recommendation 29). As a result, the engine will detect wrongly subscripts or superscripts.
- The text stream obtained will not take into account the columns:

Left-hand Substituent CH3...
 Left-Hand ring morpholino
 Aryl or heteroaryl aryl
 Nitrogen feature NHM
 Right-hand substituent alkyl

Example 12: a justified page

WO 2005/087962

1

PCT/EP2005/002268

GKSS-Forschungszentrum Geesthacht GmbH, Max-Planck-Stra-
Be 1, 21502 Geesthacht

Verfahren zur Herstellung von Profilen aus Leichtmetall-
werkstoff mittels Strangpressen

Beschreibung

Die Erfindung betrifft ein Verfahren zur Herstellung von Profilen aus Leichtmetallwerkstoff, insbesondere Magnesiumwerkstoff, mittels Strangpressen, bei dem ein Werkstoffvolumen durch eine Matrize, die die Form des gewünschten Profils bestimmt, zur Ausbildung des Profils gepreßt wird.

Die Herstellung von Profilen aus Leichtmetall- bzw. Leichtmetall-Legierungswerkstoffen mittels eines Strangpreßverfahrens ist eine allgemein eingeführte, bekannte Technologie und wird industriell angewendet. So ist es bekannt, daß konventionell verfügbare Leichtmetall- bzw. Leichtmetall-Knetlegierungen in Form von Gußblöcken durch konventionelles Strangpressen in Profilformen gepreßt werden. Dabei wird der Leichtmetall- bzw. Leichtmetall-Legierungsblock, im folgenden zusammenfassend kurz mit Werkstoffvolumen bezeichnet, bei Temperaturen

In this example, left and right justifications are applied to the paragraphs. If this makes the text prettier, it sometimes makes OCR operations difficult when the separations between the words become too small (recommendation 30). This example also does not respect recommendation 31 that states that word splitting at the end of the lines should be avoided as much as possible (The OCR engine has sometimes difficulties distinguishing hard and soft hyphens, resulting in words containing undesired hyphens in the output).

Example 13: a table with bad boundaries

WO 2004/110415

- 60 -

PCT/EP2004/051048

Comp. No.	Exp. No.	Alk ^a	Y	Alk ^b	L	Physical data
106	B2	cb	C=O	-CH ₂ -		2R-trans
107	B3b	cb	C=O	-CH ₂ -		2R-trans
108	B8	cb	C=O			2R-trans, HCl(1:3); H ₂ O(1:1)
109	B2	cb	C=O			2R-trans HC(1:2) H ₂ O(1:1)
110	B3b	cb	C=O			2R-trans
111	B2	cb	C=O			[2R-(2α,4β(E))]
		cb	C=O			2R-trans

In this example, the boundaries of the table in the received original before scanning are of bad quality. After scanning, the OCR procedure is unable to detect correctly the table and a manual operation is required to segment the page. If such a page is not checked by an operator for quality, the text output will contain lots of undesired "junk" characters that will make the indexation of the document by search engines less effective.

Example 14: bad subscript and superscript characters

WO 2005/100305

PCT/IB2005/000872

-9-

thiazolyl, pyrazolyl, pyridinyl, pyrimidinyl, purinyl, quinolinyl,
benzofuran and isoquinolinyl.

p. "heteroaryl, optionally substituted," refers to a heteroaryl moiety as
defined immediately above, in which up to 4 carbon atoms of the
heteroaryl moiety may be substituted with a substituent, each
substituent is independently selected from the group consisting of
halogen, cyano, hydroxy, (C₁-C₆)alkyl, (C₁-C₆)alkoxy, (C₁-C₂)alkyl
substituted with one or more halogens, (C₁-C₂)alkoxy substituted
with one or more halogens, SR^a, and NR^bR^c, in which R^b and R^c are
as defined above.

q. "heterocycle" or "heterocyclic ring" refers to any 3- or 4-membered
ring containing a heteroatom selected from oxygen, nitrogen and
sulfur; or a 5-, 6-, 7-, 8-, 9-, or 10- membered ring containing 1, 2,
or 3 nitrogen atoms; 1 oxygen atom; 1 sulfur atom; 1 nitrogen and
1 sulfur atom; 1 nitrogen and 1 oxygen atom; 2 oxygen atoms in
non-adjacent positions; 1 oxygen and 1 sulfur atom in non-adjacent
positions; or 2 sulfur atoms in non-adjacent positions. The
5-membered ring has 0 to 1 double bonds, the 6- and 7-membered
rings have 0 to 2 double bonds, and the 8, 9, or 10 membered rings
may have 0, 1, 2, or 3 double bonds. The term "heterocyclic" also
includes bicyclic groups in which any of the above heterocyclic rings
is fused to a benzene ring, a cyclohexane or cyclopentane ring or
another heterocyclic ring (for example, indolyl, quinolyl, isoquinolyl,
tetrahydroquinolyl, benzofuryl, dihydrobenzofuryl or benzothienyl
and the like). Heterocyclics include: pyrrolidinyl, tetrahydrofuranyl,
tetrahydrothiophenyl, piperidinyl, piperazinyl, azepane, azocane,
morpholinyl, isochroamyl and quinolinyl.

r. "heterocyclic, optionally substituted" refers to a heterocyclic moiety
as defined immediately above, in which up to 4 carbon atoms of the
heterocycle moiety may be substituted with a substituent, each
substituent is independently selected from the group consisting of
halogen, cyano, hydroxy, (C₁-C₆)alkyl, (C₁-C₆)alkoxy, (C₁-C₂)alkyl
substituted with one or more halogens, (C₁-C₂)alkoxy substituted
with one or more halogens, SR^a, and NR^bR^c, in which R^b and R^c are
as defined above. Any nitrogen atom within such a heterocyclic ring

This example exhibits the following problems (recommendation 35):

- Subscript and superscript characters too small
- Subscript characters located too low with respect to the baseline
- Superscript characters located too high with respect to the baseline

As a result, the lines 34 and 35 of the text are recognized as follows by the OCR procedure:

"Substituted with one or more halogens, (C -C)alkoxy substituted
1 2
8 8 9 8 9
with one or more halogens, SR , and NR R , in which R and R are"

Example 15: an example with unusual characters

WO 2006/057705

PCT/

c = speed of sound in water;

\tilde{z}_u = initial altitude for beam pair u ;

$\Delta\varepsilon_{z,u} = \varepsilon_{z,p+1,u} - \varepsilon_{z,p,u}$ = comparable to sway-reduced altitude difference;

$\Delta\varepsilon_{\gamma,u} = \varepsilon_{\gamma,p+1,u} - \varepsilon_{\gamma,p,u}$ = comparable to sway-reduced horizontal displacem

5 $\varepsilon_{z,p,u}$ = difference of vertical linearization point in ping p , beam pair u , from nominal \tilde{z}_u ;

$\varepsilon_{z,p+1,u}$ = difference of vertical linearization point in ping $p+1$, beam pair u , nominal \tilde{z}_u ;

10 $\varepsilon_{\gamma,p,u}$ = difference of horizontal-range sample v linearization point in ping p , beam pair u , from the nominal $\gamma_{v,u}$. Note that this is the same for all horizontal samples;

$\varepsilon_{\gamma,p+1,u}$ = difference of horizontal-range sample v linearization point in ping $p+1$, beam pair u , from the nominal $\gamma_{v,u}$. Note that this is the same for all horizontal samples;

15 $\gamma_{v,u}$ = nominal horizontal offset to horizontal-range sample u for beam pair

This sample exhibits the following problems:

- Unusual characters: italic greek, and even characters with a tilde on top.
- The subscripts here again are too small

With most OCR engines, all unusual characters will not be recognized correctly.

Example 16: an example with narrow fonts and narrow spacing

WO 2006/036330

PCT/US2005/028798

23. The method of claim 18, wherein the data is encoded onto the representative transmission symbol by using a modulation method selected from a group consisting of: amplitude modulation, phase modulation, frequency modulation, single-sideband modulation, vestigial-sideband modulation, quadrature amplitude modulation, orthogonal frequency division modulation, pulse-code modulation, pulse-width modulation, pulse-amplitude modulation, pulse-position modulation, pulse-density modulation, frequency-shift keying, and phase-shift keying.
24. The method of claim 18, wherein each of the at least two communication signals is transmitted through a communication medium selected from a group consisting of: a wire medium, a wireless medium, an optical fiber ribbon, a fiber optic cable, a single mode fiber optic cable, a multi-mode fiber optic cable, a twisted pair wire, an unshielded twisted pair wire, a plenum wire, a PVC wire, and a coaxial cable.
25. The method of claim 18, wherein the at least two communication signals are both transmitted wirelessly.
26. The method of claim 18, wherein the at least two communication signals are both transmitted through a wire medium.
27. The method of claim 18, wherein the at least two communication signals are transmitted through a wire medium, and wirelessly.

This example does not respect recommendations 37 and 38. As a result, the OCR engine cannot distinguish correctly word boundaries and the result of the OCR is totally unusable.

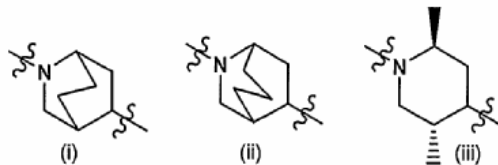
Example 17: bad stamp by receiving office before scanning

WO 2006/058294

PCT/US2005/042931

reagent such as diborane or alkylation of the piperidine nitrogen with an alkyl halide or sulfonate ester provides the desired compounds.

[00176] Additionally, compounds of formulae (I, Ia, and Ib) in which the piperidine ring is replaced by:



This example does not respect recommendation 47. As a result, the first 6 words of the text of the page cannot be read by the OCR procedure. Moreover, the stamp introduces extra invalid characters that will pollute the indexation engines if the page is not quality-checked by an operator.

Example 18: another page with mathematical formulae badly layed out

probability of the statistical outlier event of a noise only FFT bin magnitude being larger than a FFT bin containing both signal and noise is negligible.

Define,

$$\alpha = \sum_{n=0}^{N-1} r[n] \exp[-j2\pi(\frac{\hat{f}}{f_s} - \frac{1}{2N})n] \quad (9)$$

$$\beta = \sum_{n=0}^{N-1} r[n] \exp[-j2\pi(\frac{\hat{f}}{f_s} + \frac{1}{2N})n] \quad (10)$$

Then the discriminant, or distance metric, of frequency estimation error is defined as,

$$D(\varepsilon, \hat{\varepsilon}) = \frac{|\beta| - |\alpha|}{|\beta| + |\alpha|} \quad (11)$$

$$\text{where, } \varepsilon = fT_s - \frac{k_{\max}}{N} \quad (12)$$

and,

$$\hat{\varepsilon} = \hat{f}T_s - \frac{k_{\max}}{N}$$

For the initial frequency estimate using the FFT, $\hat{f}_0 T_s = \frac{k_{\max}}{N}$ and $\hat{\varepsilon} = 0$.

In the noiseless case,

$$D(\varepsilon, \hat{\varepsilon}) = \begin{cases} -1, & \varepsilon - \hat{\varepsilon} = \frac{-1}{2N} \\ 0, & \varepsilon - \hat{\varepsilon} = 0, \\ 1, & \varepsilon - \hat{\varepsilon} = \frac{1}{2N} \end{cases} \quad (13)$$

$D(\varepsilon, \hat{\varepsilon})$ is a monotonically increasing function of $\varepsilon - \hat{\varepsilon}$. Therefore, each $D(\varepsilon, \hat{\varepsilon})$, there is a unique inverse mapping to $\varepsilon - \hat{\varepsilon}$. Clearly, $D(\varepsilon, \hat{\varepsilon})$ may be used as a discriminant for fine frequency interpolation between FFT bin center frequencies.

There exists some functional relationship such that,

$$\hat{f}_1 T_s = \frac{k_{\max}}{N} + \psi[D(\varepsilon, \hat{\varepsilon})] \quad (14)$$

where, $\psi(\cdot)$ is a monotone increasing function. $\psi(\cdot)$ is called the frequency interpolation function and \hat{f}_1 is the first interpolated frequency estimate.

The requirement that \hat{f}_1 has zero error in the noiseless case is,

$$\psi[D(\varepsilon, \hat{\varepsilon})] = \varepsilon - \hat{\varepsilon}, \text{ for } -1 \leq D \leq 1. \text{ Therefore, } \psi^{-1}(\varepsilon - \hat{\varepsilon}) = D(\varepsilon, \hat{\varepsilon}).$$

25

THE FREQUENCY INTERPOLATION FUNCTION

As this page does not respect many recommendations, the result of the OCR is not usable:

- embedded mathematical formulae not separated from text paragraphs (recommendation 23)
- Unusual characters in text paragraphs (recommendation 40)
- Italic style combined with Greek characters (recommendation 39)

The recommended way to layout this page is to use extra spaces to separate embedded formulae from the paragraphs. Greek letters should not be italicized in formulae and paragraphs. Hats (^) shall be avoided to denote variables in text paragraphs when possible: superscripts may be used instead: "epsilon hat" could be represented ε^\wedge or ε^{hat} .

2-{3-*[*[5-Chloro-4-(1*H*-indol-3-yl)pyrimidin-2-yl]amino}piperidin-1-yl]-*N*-methylacetamide (S Enantiomer)

LCMS 399/401 [M+H]⁺, RT 1.88 min.

EXAMPLE 320

5 3-*[*[5-Chloro-4-(1*H*-indol-3-yl)pyrimidin-2-yl]amino}-*N*-isopropylpiperidine-1-carboxamide (Enantiomer 1)

LCMS 413/415 [M+H]⁺, RT 3.20 min.

EXAMPLE 321

10 3-*[*[5-Chloro-4-(1*H*-indol-3-yl)pyrimidin-2-yl]amino}-*N*-isopropylpiperidine-1-carboxamide (Enantiomer 2)

LCMS 413/415 [M+H]⁺, RT 3.19 min.

EXAMPLE 322

2-{3-*[*(4-*[*[5-Chloro-4-(1*H*-indol-3-yl)pyrimidin-2-yl]amino}piperidin-1-yl)carbonyl]pyrrolidin-1-yl}-*N*-methylacetamide (Racemate)

15 LCMS (pH 5.8) 496/498 [M+H]⁺, RT 2.79 min.

This is a recurrent example of page with OCR problems encountered in the PCT publication. This page does not respect the following recommendations:

- Recommendation 41: text should not be underlined. Underlining is especially unrecommended for chemical formulae (dictionaries cannot help in these cases). Notably, this causes problems with all characters that intersect with the underline: l y p ... are not recognized correctly.
- Recommendation 39: italic style is not recommended. It is specially unrecommended to change the font style within a word (OCR engines assume often that all characters of a word share the same style). As a result, all the "1*H*" and "*N*-" are badly recognized.

Example 20: a page completely unreadable

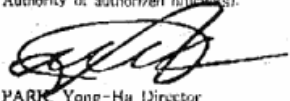
WO 2005/071074

PCT/KR2005/000214

BUILUPST TREATY ON THE INTERNATIONAL DEPOSITION OF THE DEPOSIT
OF MICROORGANISMS FOR THE PURPOSE OF PATENT PROCEDURE

INTERNATIONAL FORM -
RECEIPT IN THE CASE OF AN ORIGINAL DEPOSIT
issued pursuant to Rule 7.1

TO : Maxam Biotechnology Research Institute
#311, Hujung-m, Naesung-eup, Yongin-city, Kyonggi-do 449-910,
Republic of Korea

I. IDENTIFICATION OF THE MICROORGANISM	
Identification reference given by the DEPOSITOR: Saccharomyces cerevisiae 0J3501 / M61K8 #36	Accession number given by the INTERNATIONAL DEPOSITARY AUTHORITY: KCTC 10582HP
II. SCIENTIFIC DESCRIPTION AND/OR PROPOSED TAXONOMIC DESIGNATION	
The microorganism identified under I above was accompanied by: <input checked="" type="checkbox"/> In scientific description <input type="checkbox"/> In proposed taxonomic designation (Mark with a cross where applicable)	
III. RECEIPT AND ACCEPTANCE	
This International Depositary Authority accepts the microorganism identified under I above, which was received by it on January 13 2004 .	
IV. RECEIPT OF REQUEST FOR CONVERSION	
The microorganism identified under I above was received by this International Depositary Authority on _____ and a request to convert the original deposit to a deposit under the Budapest Treaty was received by it on _____	
V. INTERNATIONAL DEPOSITARY AUTHORITY	
Name: Korean Collection for Type Cultures	Signature(s) of person(s) having the power to represent the International Depositary Authority of authorized official(s): 
Address: Korea Research Institute of Bioscience and Biotechnology (KRIBB) #52, Oun-dong, Yusong-ku, Taejeon 305-333, Republic of Korea	PARK Yong-Hu Director Date: January 17 2004

Form IBSI/IBTC Form F0 1/4/2004

This page should not be accepted by offices: it has been sent by fax at 200 dpi and is even not readable by a human. In order to deal with these cases, operators shall declare the whole content of the page as an image as no text is extractable.