

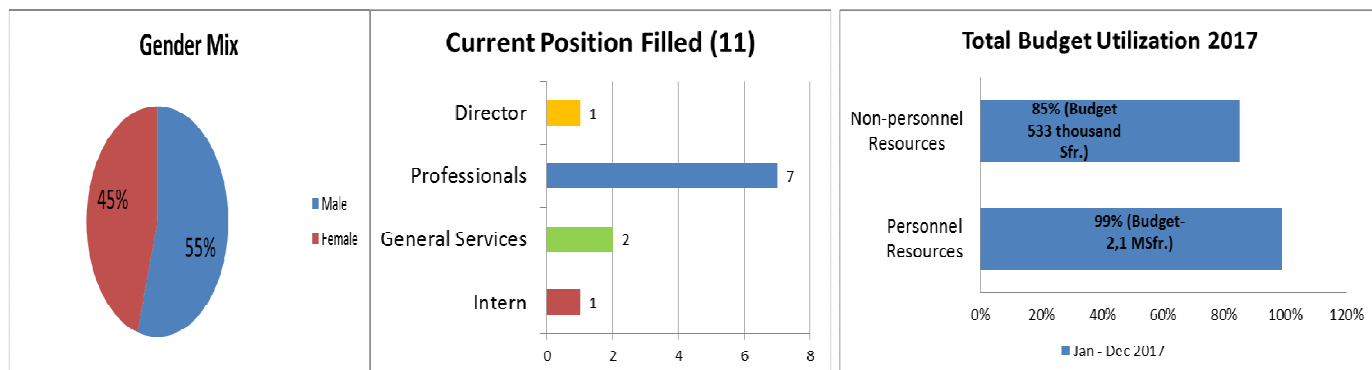
INTERNAL OVERSIGHT DIVISION (IOD)

DASHBOARD
January to December 2017

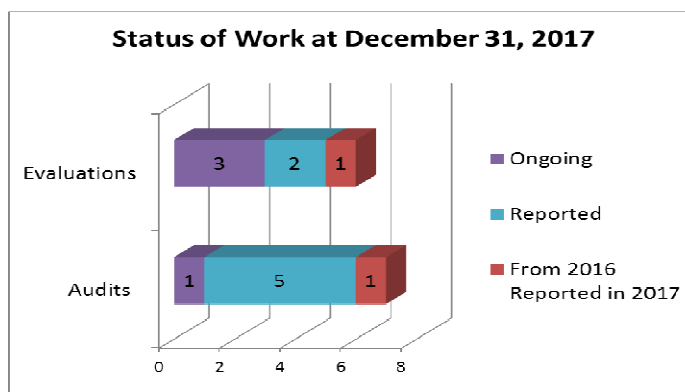
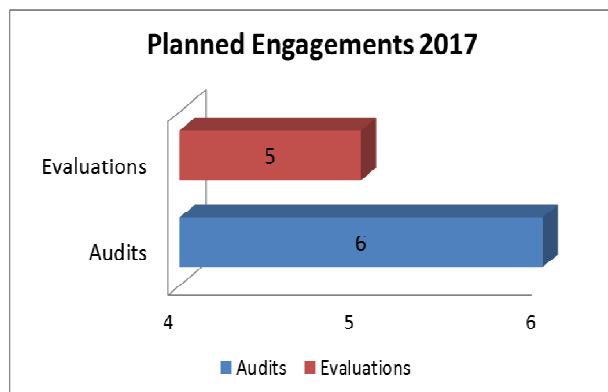
CURRENT OVERSIGHT ACTIVITIES AT A GLANCE

REF	Task	Phase
EVAL 2017-03	Evaluation of Program 18: IP and Global Challenges	Reporting
EVAL 2017-04	Evaluation of Regional Bureau for Latin America and the Caribbean	Fieldwork
EVAL 2017-05	Evaluation of Capacity Development of Intellectual Property Skills	Fieldwork
IA 2017-04	Audit of Recruitment	Reporting

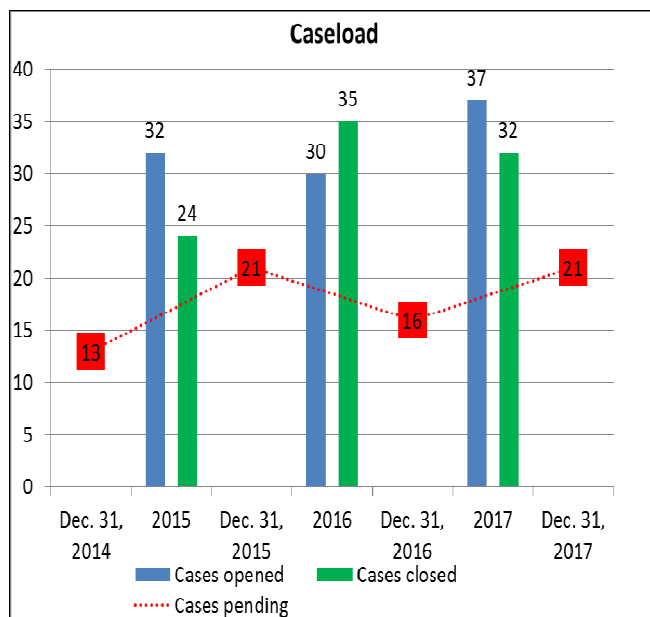
IOD HUMAN AND FINANCIAL RESOURCES IN 2017



AUDIT AND EVALUATION ACTIVITIES OF 2017



INVESTIGATIONS ACTIVITIES OF 2017



Category of Cases Opened in 2017	2017	2017
Abuse of work time	8	22%
Unauthorized outside activities	2	5%
Insubordination and other inappropriate behavior	7	19%
Other failure to meet the standards of conduct for international civil servants	4	11%
Harassment (non-sexual), Discrimination	2	5%
Procurement irregularities	1	3%
Breach of confidentiality	1	3%
Conflict of interest	1	3%
Misuse of WIPO funds or assets	2	5%
Retaliation	1	3%
Recruitment irregularities	1	3%
Negligence at work, obstruction to WIPO operations	1	3%
Abuse of position or status	2	5%
Benefits and Entitlements Fraud or Abuse	1	3%
Sexual harassment, abuse or exploitation	3	8%
Grand Total	37	100%

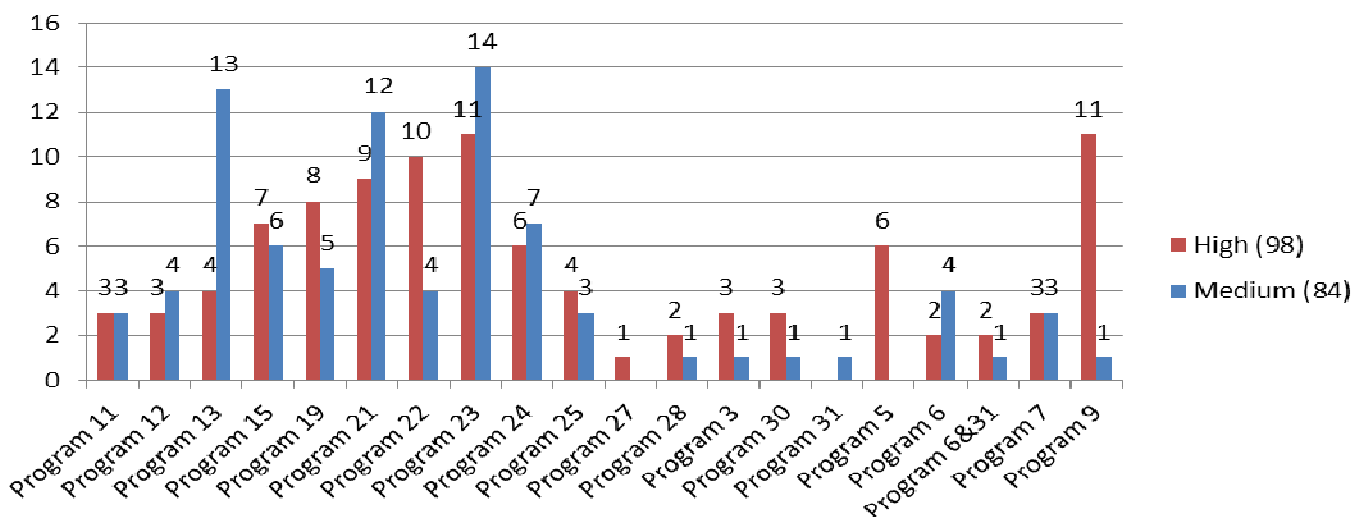
WIPO OPEN RECOMMENDATIONS STATUS AT December 31, 2017

QUICK STATS

- Open recommendations at January 1, 2017 – 155 (High 84; Medium:71)
- Recommendations added - 81
- Recommendations closed - 54
- **Open Recommendations at December 31, 2017 – 193 (High 98; Medium 84)**
- Reports issued between January - December 2017:
 - Evaluations – 3 (1 Evaluation from 2016 reported in 2017)
 - Audits – 6 (1 Audit from 2016 reported in 2017)
 - Investigations - 11
 - Management Implication Reports - 2
- Customer Satisfaction – Cumulative Average Satisfaction Rating at December 31, 2017:

Post assignment Surveys	After One Year Surveys
82%	76%

Open Recommendations by Program and by Priority (182)



Overdue Recommendations as a Percentage of Total Open Recommendations - By Program

