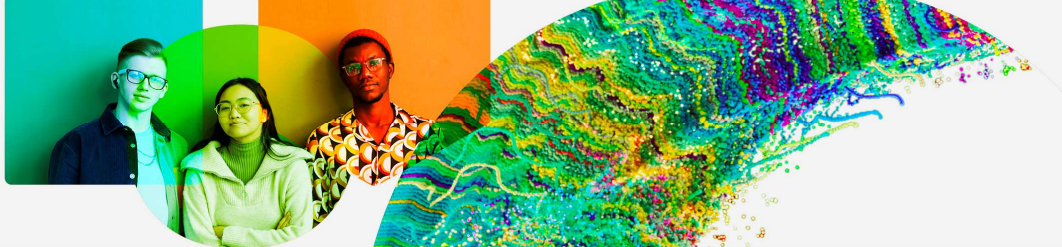


Global Innovation Index 2024



London, United Kingdom

London is the top-ranked cluster, out of 3 British clusters, that falls within the top 100 S&T clusters in 2024. It filed **633 PCT applications** and published **5,642 scientific articles**, both per 1 million inhabitants over the last five years, making it the:

21st largest science and technology cluster in 2024

70th S&T cluster by intensity (relative to population density) in 2024

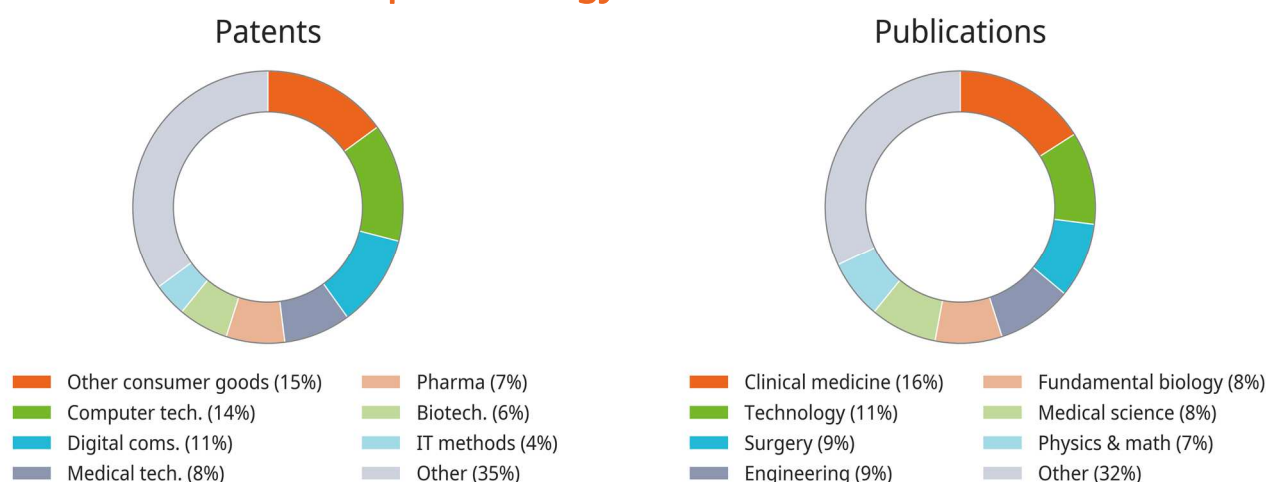
Top PCT applicants

| | | Patents | Share |
|---|----------------------|---------|-------|
| 1 | NICOVENTURES TRADING | 822 | 12% |
| 2 | BRITISH TELECOM | 395 | 6% |
| 3 | IMPERIAL INNOVATIONS | 255 | 4% |

Top publishing organizations

| | | Articles | Share |
|---|---------------------------|----------|-------|
| 1 | UNIVERSITY COLLEGE LONDON | 15,024 | 26% |
| 2 | IMPERIAL COLLEGE LONDON | 12,491 | 21% |
| 3 | KING'S COLLEGE LONDON | 4,042 | 7% |

Top technology fields in London



26% of London's PCT patent applications are filed in collaboration with other inventors, with **Cambridge, San Jose-San Francisco** and **Boston-Cambridge** emerging as the top collaborative locations.

75% of London's scientific articles are published in collaboration with other organizations, with the top three collaborating locations being **Oxford, Amsterdam-Rotterdam** and **Paris**.