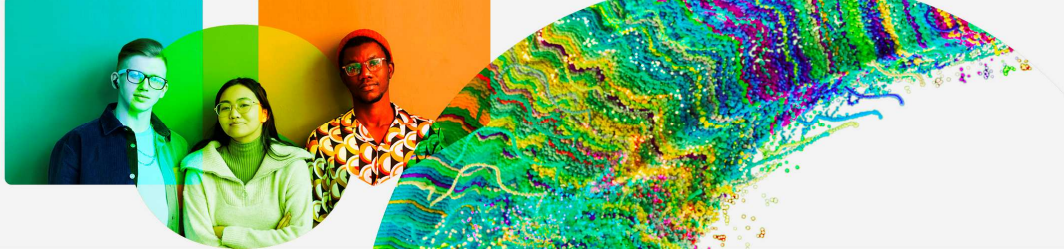


Global Innovation Index 2024



Taipei-Hsinchu, Taiwan (Province of China)

Taipei-Hsinchu is the only cluster within Taiwan (Province of China) that falls within the top 100 S&T clusters in 2024. It filed **345 PCT applications** and published **4,915 scientific articles**, both per 1 million inhabitants over the last five years, making it the:

25th largest science and technology cluster in 2024

83rd S&T cluster by intensity (relative to population density) in 2024

Top PCT applicants

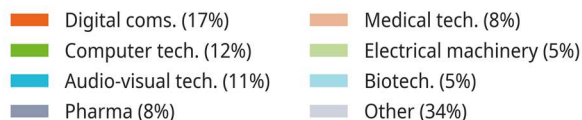
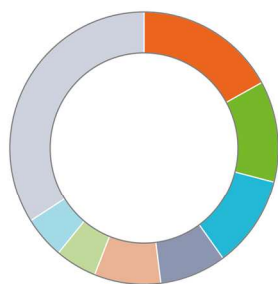
		Patents	Share
1	HEWLETT-PACKARD	630	16%
2	MEDIATEK	520	13%
3	FG INNOVATION	227	6%

Top publishing organizations

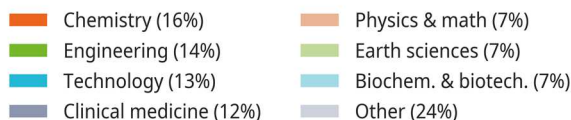
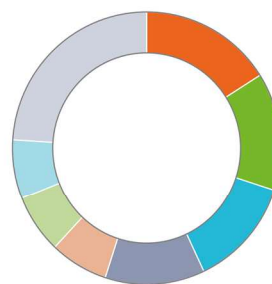
		Articles	Share
1	NATIONAL TAIWAN UNIVERSITY	8,220	15%
2	NATIONAL TSING HUA UNIVERSITY	3,367	6%
3	CHANG GUNG UNIVERSITY	2,925	5%

Top technology fields in Taipei-Hsinchu

Patents



Publications



30% of Taipei-Hsinchu's PCT patent applications are filed in collaboration with other inventors, with **San Jose-San Francisco**, **Houston** and **Shenzhen-Hong Kong-Guangzhou** emerging as the top collaborative locations.

51% of Taipei-Hsinchu's scientific articles are published in collaboration with other organizations, with the top three collaborating locations being **Taichung**, **Kaohsiung** and **Shenzhen-Hong Kong-Guangzhou**.