



## Training on the Patent Cooperation Treaty

Geneva  
April 28, 2011

Quan-Ling Sim  
Head, PCT Outreach and User Relations Section

2

### Outline

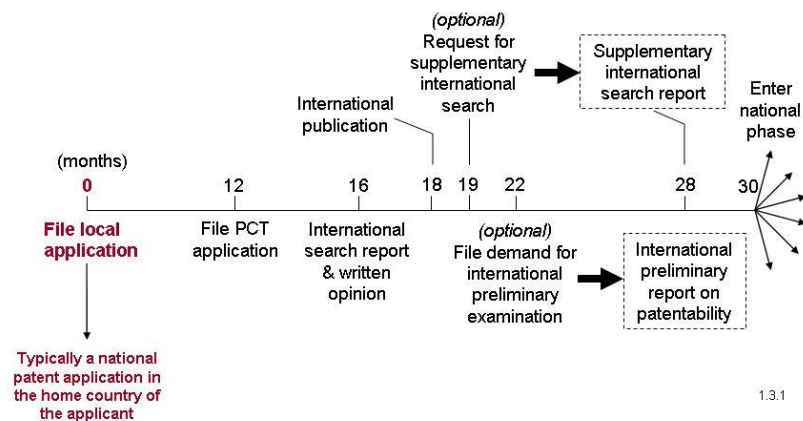
- High-level Overview of the PCT
- Training Methodologies
- PCT Resources

## High-level Overview of the PCT

### What is the PCT?

- An international treaty facilitating the process of seeking patents internationally
- An efficient and advantageous procedure for users of the patent system and patent Offices consisting of an **international** and **national** phase
- Signed in June 1970 and became operational in June 1978 with 18 Contracting States
- Has near global coverage with 142 Contracting States

## Typical Use of the PCT System



## The International Phase

- Unified filing procedure consisting of the filing and processing of a single application with legal effect in all PCT Contracting States
- Time delay of at least 30 months before the start of national patent procedures
- Information on the potential patentability of an invention prior to the start of national patent procedures ("national phase")

## The National Phase

- Gateway to national patent systems
- Grant (or refusal) of a patent by national or regional Offices

## Why Use the PCT?

- “One” application, “one” language, “one” fee
- Valuable information on potential patentability
- Deferral of main initial costs associated with internationalization, e.g., translations, patent agents, national fees

## Training Methodologies

## Training on the PCT

- Audience and available time
- Seminars
  - Over 100/year in over 30 countries, e.g., 1 or 2 day seminars
  - Regional consultants
  - Annual PCT training in Geneva
- Study visits
- Video conferencing
- Distance learning (\*)
- Webinars (\*)

## PCT Distance Learning

- Distance learning course available in all ten PCT publication languages
  - English launched in 2009 followed by the other languages in 2010
  - Arabic, Chinese, English, French, German, Japanese, Korean, Portuguese, Russian, Spanish
- Entirely self-study with self-assessment questions
- Can be completed in about 4 hours
- Course content to be migrated to the new Moodle platform

WIPO Worldwide Academy - Training - Windows Internet Explorer

http://193.5.93.136/library/welcome\_uni.cfm

File Edit View Favorites Tools Help

WIPO Worldwide Academy - Training

WIPO Worldwide Academy

**My Courses - PCTuser PCTuser1**

Below is a list of all your registered courses. To begin, click any course title. You may review and modify your personal profile by clicking the Profile button. To view your personal grade book, click the Grade Book button.

Category: [All Categories] Total: 10

Code	Title	Type	Availability
<b>General Primers</b>			
101APCT	[Arabic] PCT Distance Learning Course - Introduction to the Patent Cooperation Treaty	Online	Open
101CPCT	[Chinese] PCT Distance Learning Course - Introduction to the Patent Cooperation Treaty	Online	Open
101EPCT	[English] PCT Distance Learning Course - Introduction to the Patent Cooperation Treaty	Online	Open
101FPCT	[French] Cours d'enseignement à distance sur le PCT - Introduction	Online	Open
101GPCT	[German] PCT-Fernlehrgang - Einführung	Online	Open
101JPCT	[Japanese] PCT Distance Learning Course - Introduction to the Patent Cooperation Treaty	Online	Open
101KPCT	[Korean] PCT Distance Learning Course - Introduction to the Patent Cooperation Treaty	Online	Open
101PPCT	[Portuguese] Curso de ensino à distância sobre o PCT - Introdução	Online	Open
101RPCT	[Russian] PCT Distance Learning Course - Introduction to the Patent Cooperation Treaty	Online	Open
101SPCT	[Spanish] Curso de enseñanza a distancia sobre el PCT - Introducción	Online	Open

WIPO  
WORLD  
INTELLECTUAL PROPERTY  
ORGANIZATION

WIPO Worldwide Academy - Training - Windows Internet Explorer

http://193.5.93.136/library/description\_uni.cfm?course=101PCT&begin\_uni=y&dcode=

File Edit View Favorites Tools Help

WIPO Worldwide Academy - Training

WIPO Worldwide Academy

Course: [English] PCT Distance Learning Course - Introduction to the Patent Cooperation Treaty  
Lesson: Introduction  
Topic: Preface, Resources and Contact Information

My Course  
Syllabus  
Resources  
Search  
Profile  
Grade Book  
Short Cuts  
Help  
Exit

**Preface**

This Distance Learning Course on the Patent Cooperation Treaty (PCT) provides you with an overview of this international treaty administered by the World Intellectual Property Organization.

This course was developed by WIPO specialists on the PCT using the pedagogical and distance learning methodology of the WIPO Academy and includes some multiple-choice tests to measure your understanding and progress. In addition to the course material, you will find links to specific reference documents, such as legal texts and other official WIPO documents. By the end of this course you should have a better understanding of the PCT system and the reasons it should form part of your overall patent strategy.

This course is available online without any time restrictions.

**Resources - PCT Glossary**

The [PCT Glossary](http://www.wipo.int/pct/en/texts/glossary.html) (<http://www.wipo.int/pct/en/texts/glossary.html>) is a reference tool containing definitions of commonly-used PCT terminology and is intended to help users better understand the PCT system. Those involved in drafting and/or translating PCT documentation may find it particularly useful.

References to "Articles" are to those of the PCT, to "Rules" are to those of the Regulations under the PCT. For complete information, we recommend that you consult the [official texts](#), particularly the PCT itself and the Regulations under the PCT. In case of any inconsistency with the Glossary, it is those texts which apply. All terms are defined or explained in the context of the PCT.

**Contact Information**

PCT Distance Learning Course Administrator  
PCT Outreach and User Relations Section  
PCT Legal Division  
World Intellectual Property Organization

WIPO  
WORLD INTELLECTUAL PROPERTY ORGANIZATION

WIPO Worldwide Academy - Training - Windows Internet Explorer

http://193.5.93.136/library/description\_uni.cfm?course=101PCT&begin\_uni=y&dcode=

File Edit View Favorites Tools Help

WIPO Worldwide Academy - Training

WIPO Worldwide Academy

Course: [English] PCT Distance Learning Course - Introduction to the Patent Cooperation Treaty  
Lesson: Module 3: Preparing the PCT Application  
Topic: Module 3 - End of Module Test

My Course  
Syllabus  
Resources  
Search  
Profile  
Grade Book  
Short Cuts  
Help  
Exit

**End of Module Test**

Please attempt the online end of module test (EMT) by clicking on the "Exam" icon above.

**Note:**

1. You will get the result as soon as you submit your answers.
2. You may repeat the test as often as you wish.

**Other Topics:**

3. Preparing the PCT Application
  - 3.1 Form and Contents
    - 3.1.1 The Request
      - 3.1.1.1 Declarations
      - 3.1.1.2 Signatures
    - 3.1.2 The Abstract
    - 3.1.3 The Description
    - 3.1.4 The Claims
    - 3.1.5 The Drawings
  - 3.2 Other Formal Requirements

Module 3 - End of Module Test

WIPO  
WORLD INTELLECTUAL PROPERTY ORGANIZATION

**Course:** [English] PCT Distance Learning Course - Introduction to the Patent Cooperation Treaty  
**Lesson:** Module 3: Preparing the PCT Application

1. PCT applications must always be filed together with declarations in order to comply with national phase requirements.  
☐ True  
☐ False

2. Information on "Prior Art" is not necessary as it will only dilute the chances of patent protection.  
☐ True  
☐ False

3. Which part of the application identifies the specific patent protection the applicant is seeking?  
☐ the Request  
☐ the Description  
☐ the Claims  
☐ the Drawings

Quit Save Bookmark Submit

## Webinars

- On-line delivery of seminars
- PCT was the first area of WIPO to pioneer the use of this technology using GoToWebinar
- First webinar was broadcast in February 2009
- Huge savings in terms of training and travel costs
- Offered free-of-charge

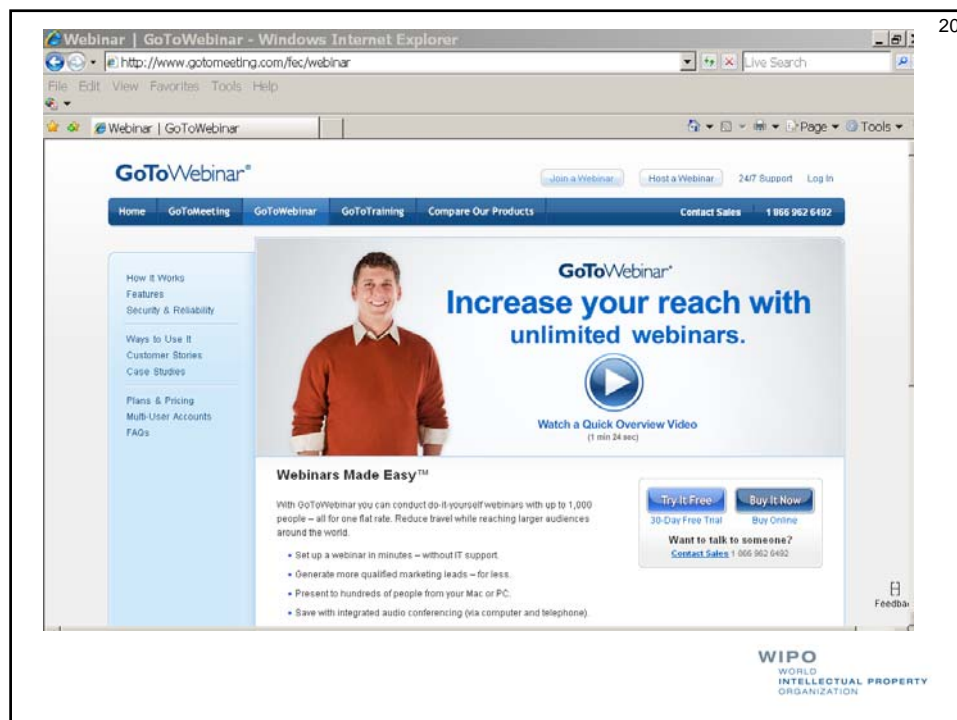
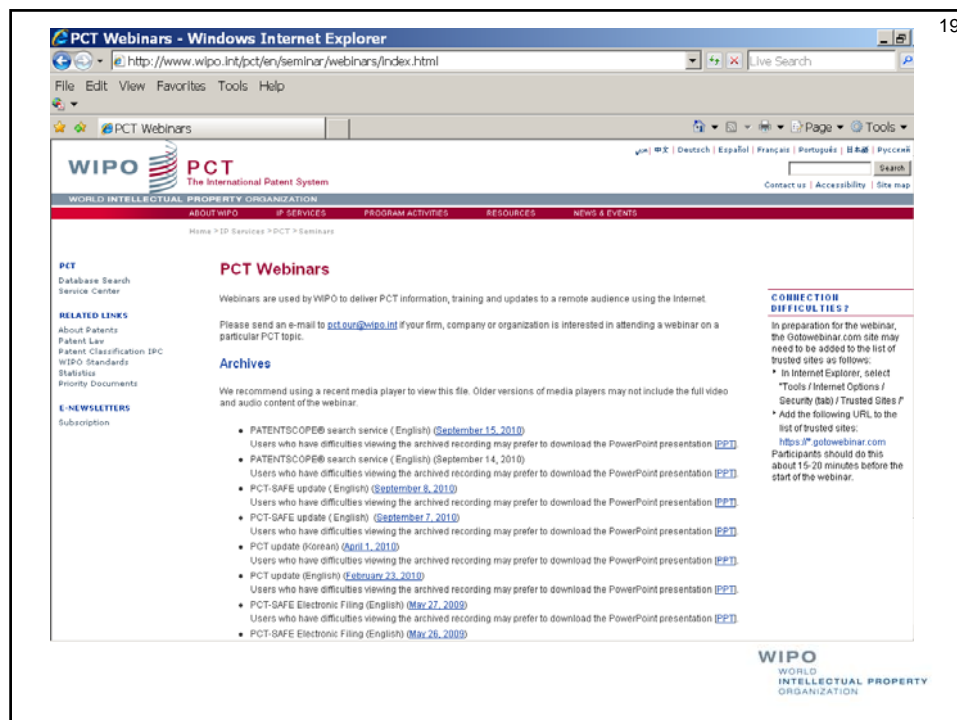


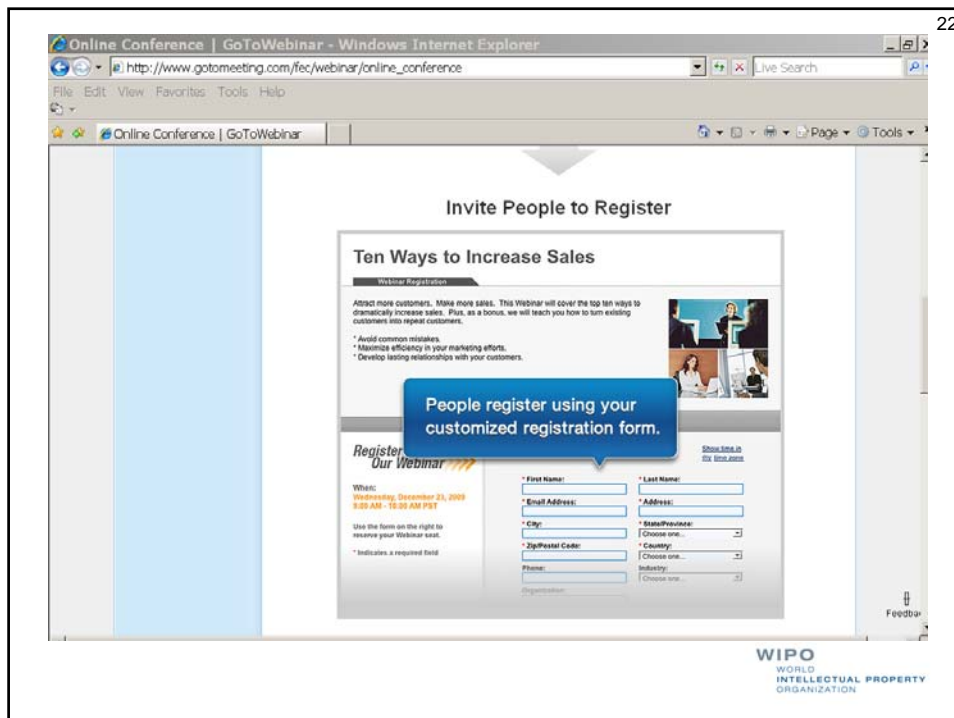
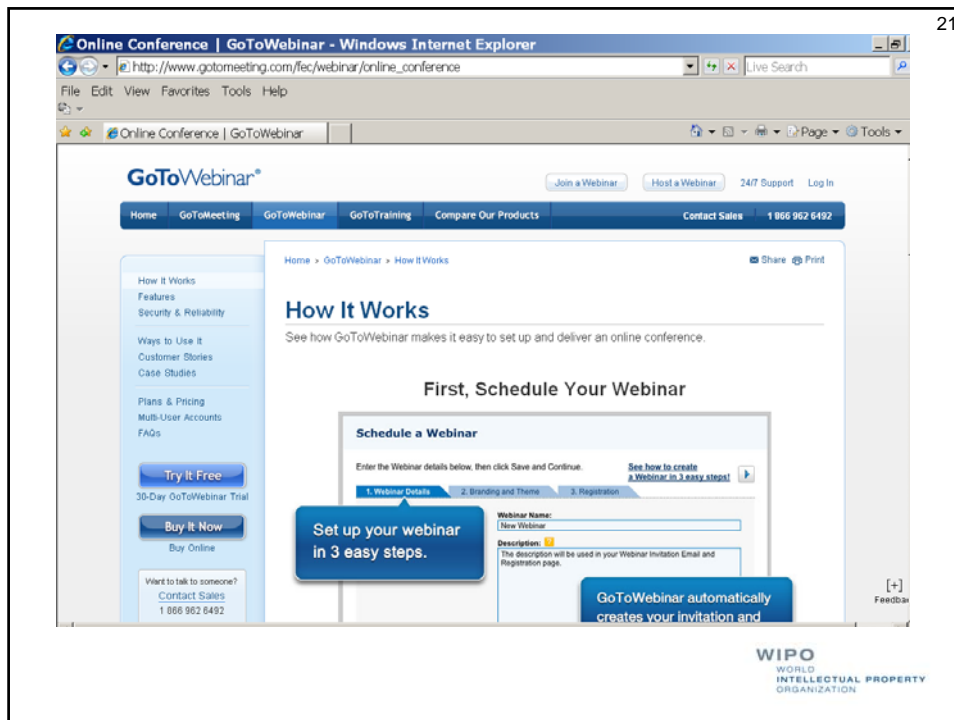
## GoToWebinar

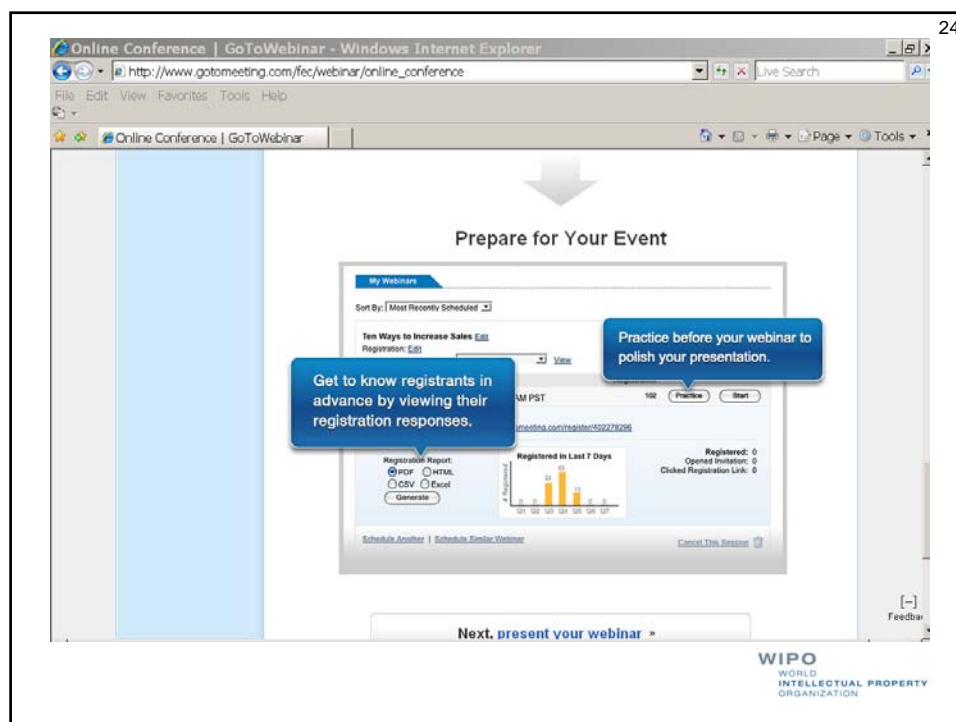
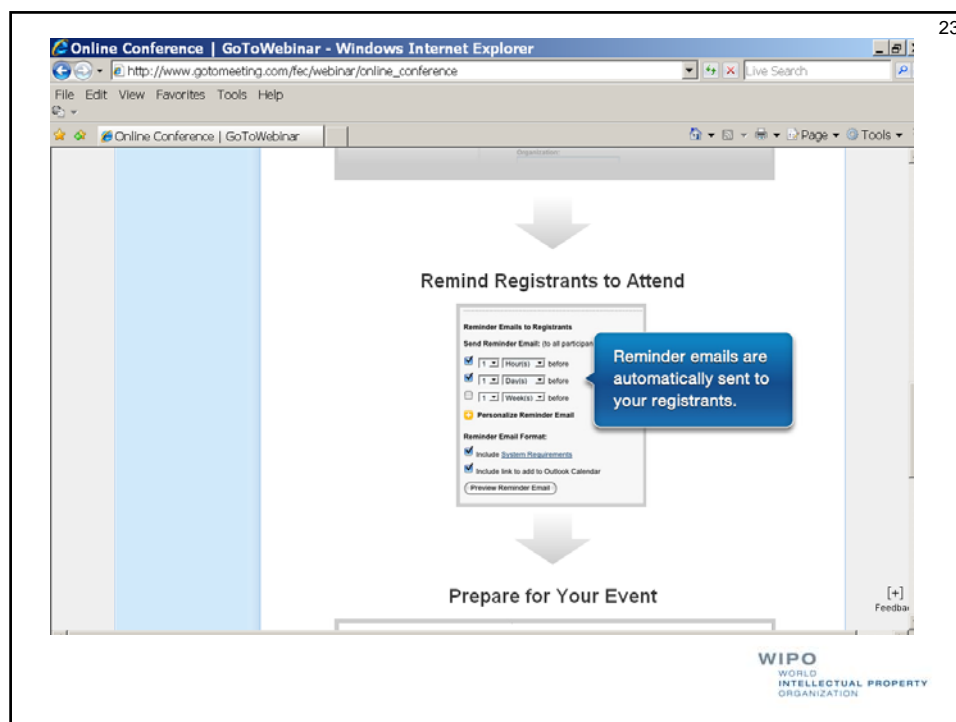
- Selected after assessing and evaluating different webinar technologies
- Features
  - Ease of installation
  - Flat-rate pricing, e.g., all-you-can offer webinars
  - Up to 1000 participants
  - No hidden or extra costs

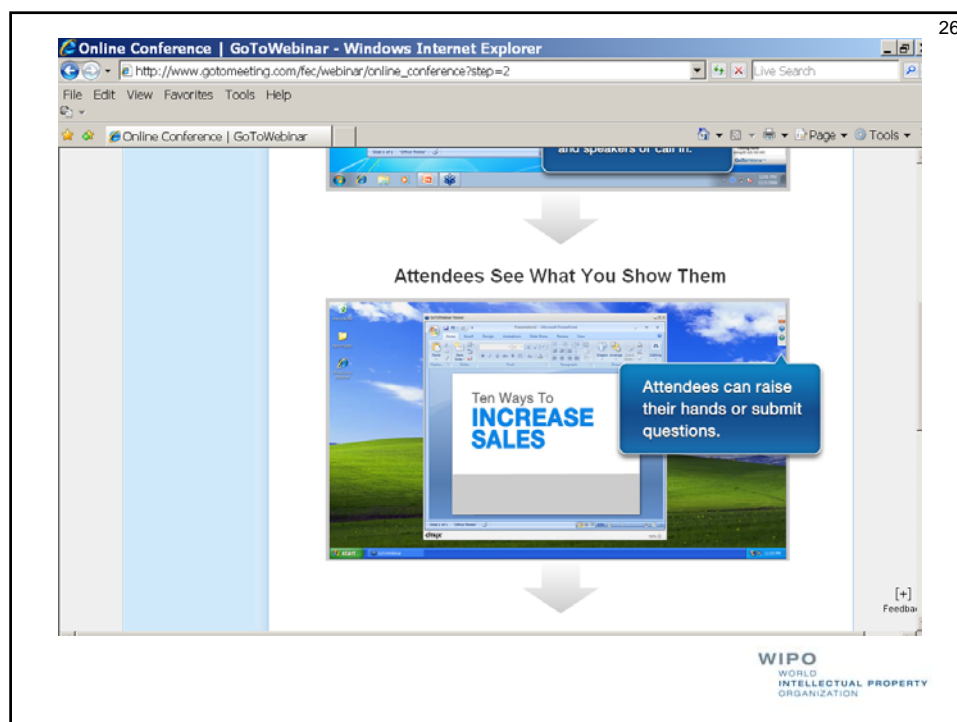
## GoToWebinar Pricing (single account)

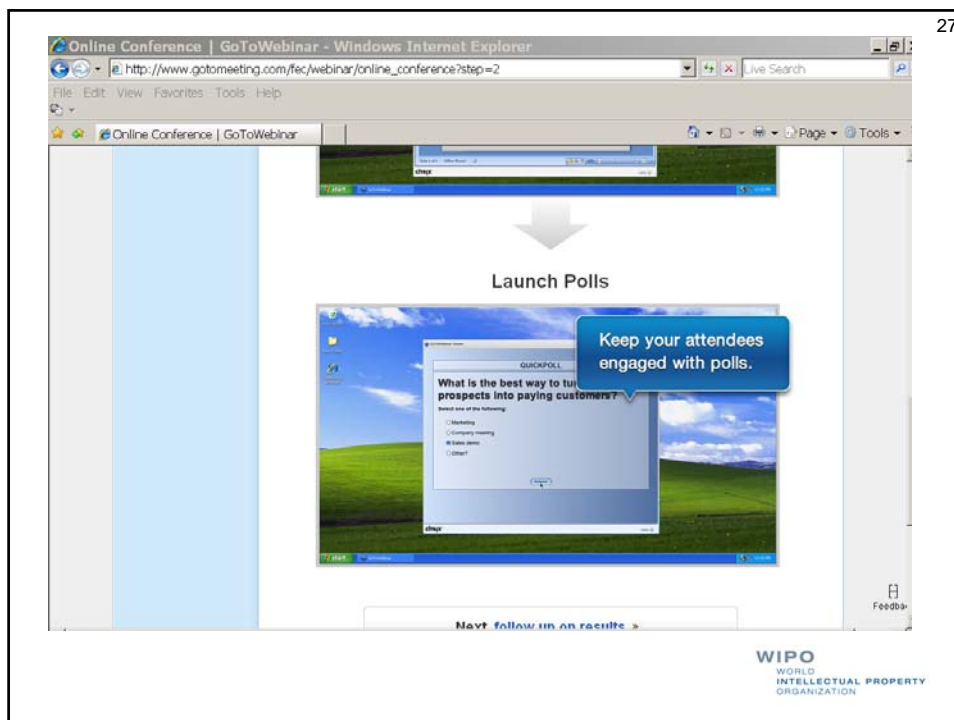
	100 participants	500 participants	1000 participants
Monthly	99 USD	399 USD	499 USD
Annual	948 USD	3828 USD	4788 USD



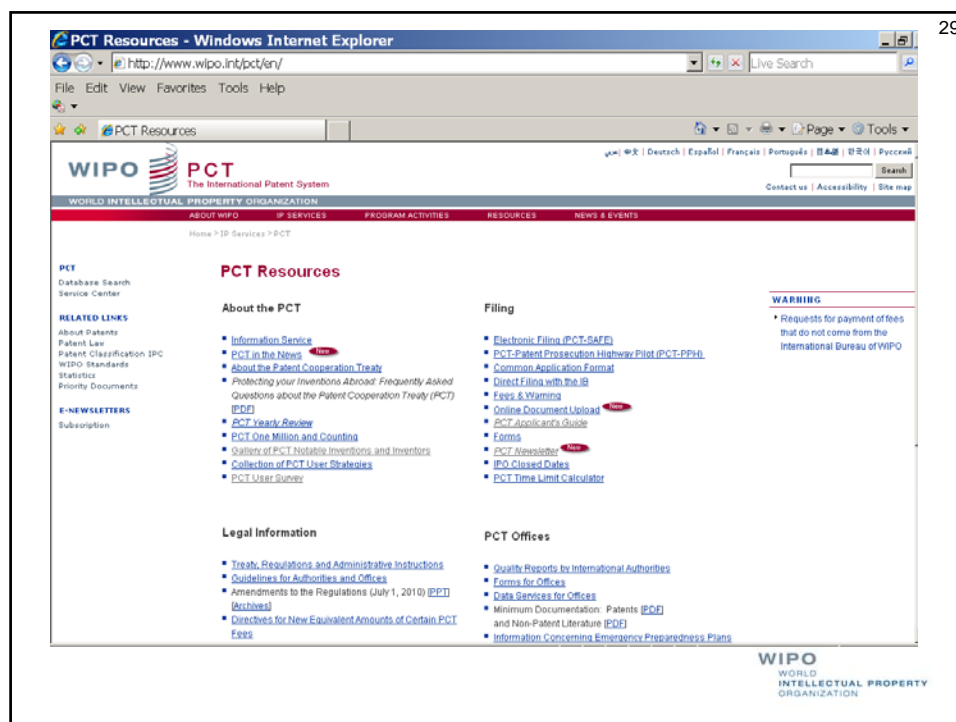








## PCT Resources



## Questions?

- PCT Information Service
  - Telephone: (+41-22) 338 83 38
  - Facsimile: (+41-22) 338 83 39
  - E-mail: [pct.infoline@wipo.int](mailto:pct.infoline@wipo.int)