



Invention. Reinvented.

Presentation to the WIPO Standing Committee on the Law of Patents (SCP)

October 2024

Julian Nolan, CEO

Executive summary

- R&D undergoing same digital transformation as other business functions
- New digital tools being used to create inventions faster and more efficiently
- Innovation advantage shifting from the best minds to the best tools

Data-Driven Invention

Iprova has developed a unique software platform, Invention Studio evo, which uses AI and other technologies to amplify – but not replace - the human ability to invent

“For me, the democratisation of invention - making it more inclusive, more diverse, more focused, more productive, more of a process, less haphazard and less expensive - is what Iprova is all about. It’s a company that turbocharges effective innovation”

Joff Wild, journalist for The Financial Times and The Wall Street Journal, and leading IP publication IAM

“Invention Studio extends the state-of-the-art for machine-enhanced creativity tools into the area of technical invention creation and, for the first time, truly makes invention an activity which is accessible throughout an organization.”

Mohamad Ali Mahfouz, Microsoft

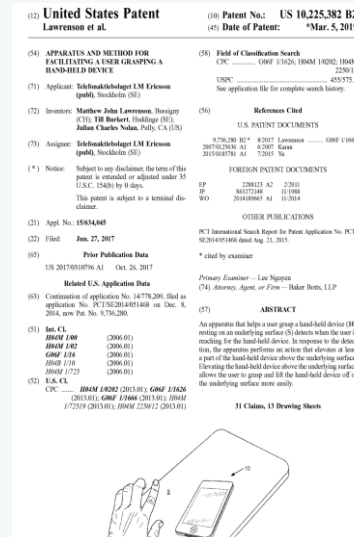
Invention. What is it?

Facilitating a user grasping a hand-held device - makes a phone easier to pick up by levitating the phone into the hand of a user by reusing its wireless charging circuit.

Three elements

- Mobile phones are becoming thinner and therefore more difficult to pick up
- Wireless charging circuits in a phone feature a planar copper coil
- Mobile phones have a proximity sensor

Invention: proximity sensor detects hand, power is applied from the battery to the wireless charging coil, creating an electromagnetic field which repels against the electromagnetic field generated by the charging matt – levitating the phone into the hand of the user.



Invention = a novel, surprising and valuable idea

Iprova created invention for a leading communications company, resulting in multiple granted patents.

Customers and market

100+

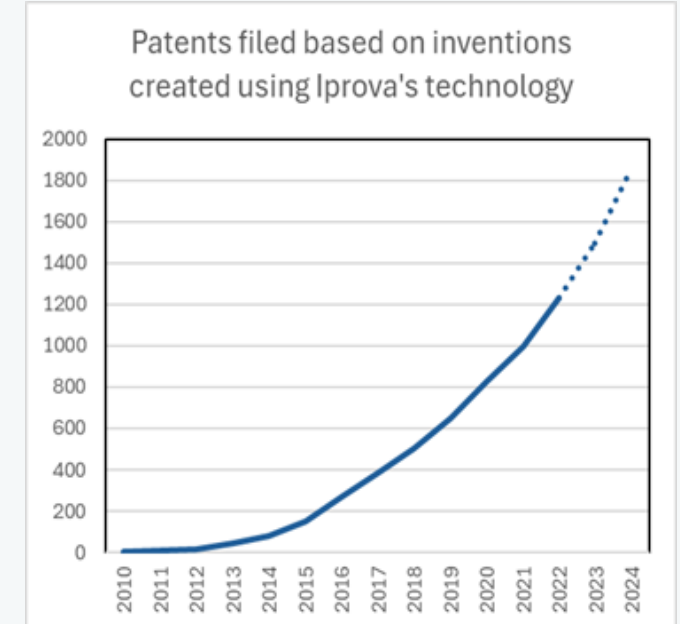
application areas are covered by our inventions.

1.5K+

patents filed based on inventions created using our technology.

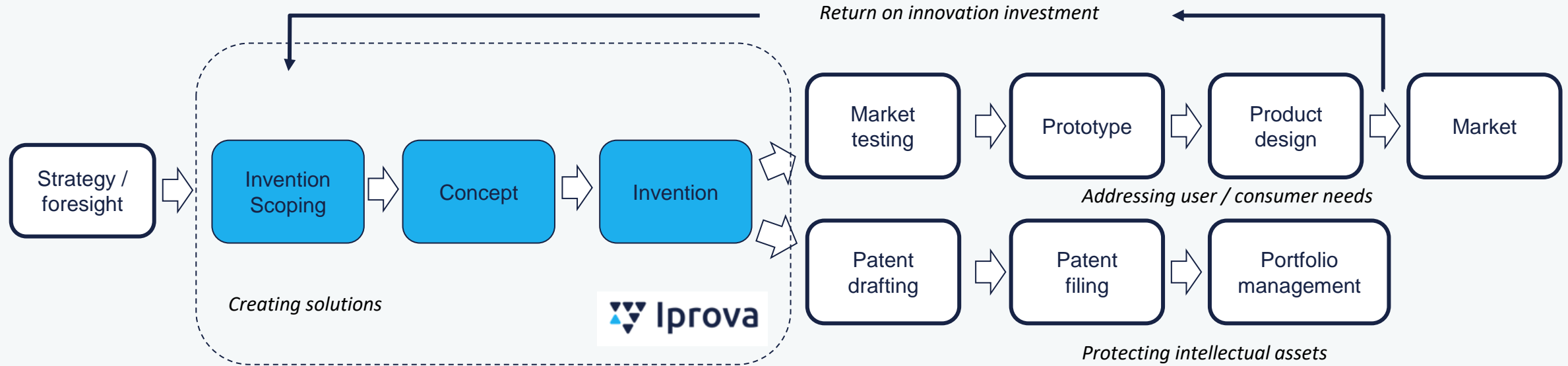
10

out of the 10 of the world's largest tech companies including Amazon, Apple and Google cite granted patents based on Iprova inventions.



Iprova works with top 3 ranked businesses in over 20 market sectors including FMCG, telecoms, energy and commodity trading.

Iprova and the innovation value-chain



“Fuzzy” front end of innovation

Traditionally:

- Work is experimental, Eureka moments, inefficient
- Outcome is unpredictable
- The race to invent is won based on human skills
- Invention is an artisanal activity of the few

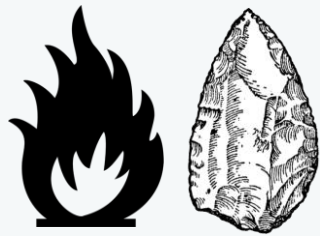
Iprova transforms the fuzzy front end.

“Data-Driven” innovation

Iprova:

- Results are efficient, systematic and reliable
- Outcome has high degree of certainty
- The race to invent is won based on tools
- Measure of progress is milestone achievement

Invention timeline



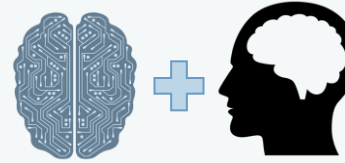
Human-only invention with no assistance.



Humans create inventions based on chance discovery of information.



Technology detects invention ingredients. Human puts them together.

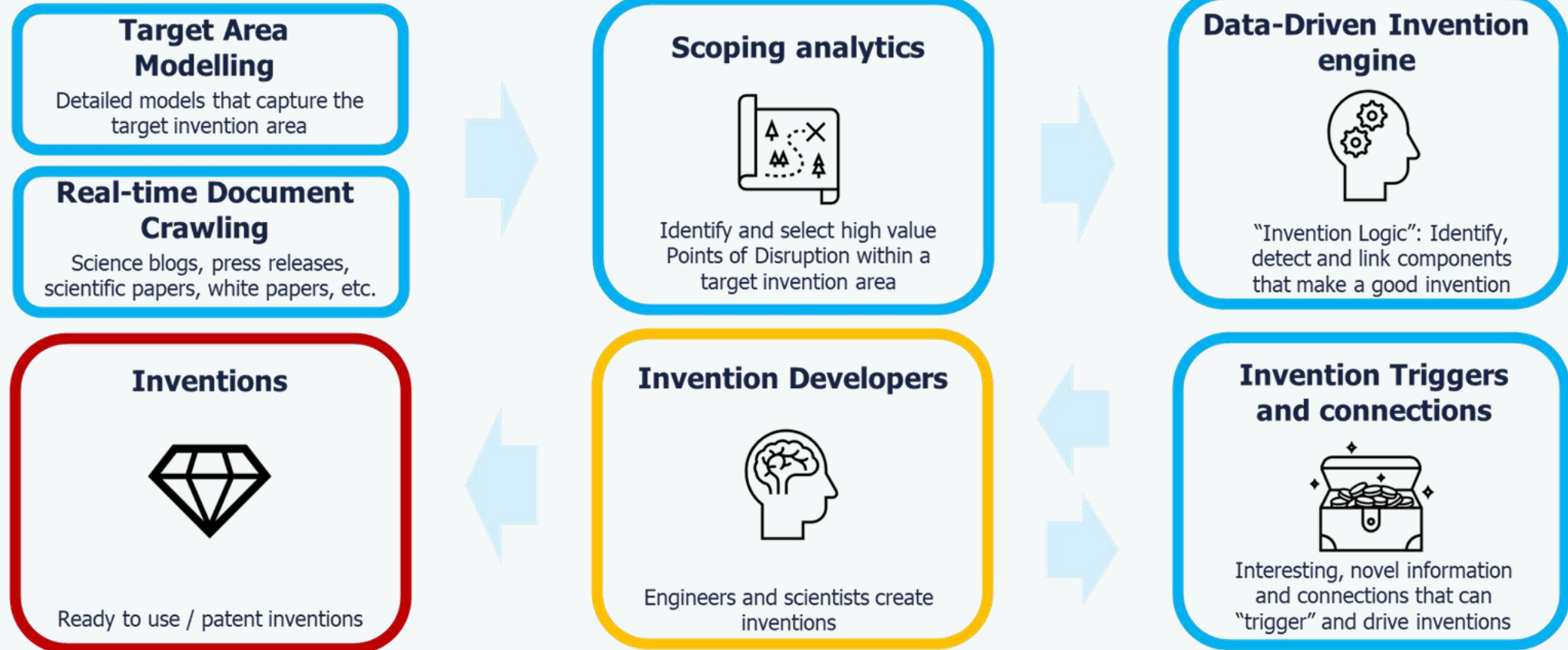


Technology combines ingredients to create candidate concepts. Human refines these into inventions.



Technology creates inventions fully automatically.

How Iprova's technology works



Example invention triggers

Technological advance

Shear-thickening fluids are materials that harden when force is applied. Their properties can be tuned using vibrations.



Scientific discovery

The light-sensitive protein melanopsin is found near the inside of the ear.



Problem

Mobile phones are becoming thinner and harder to pick up.



Example 1: Reduced Risk CPR Device



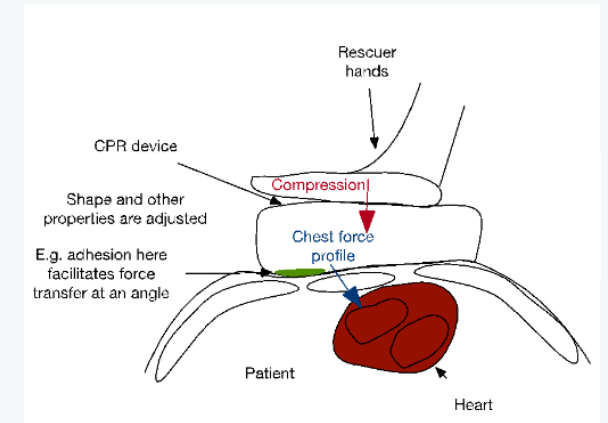
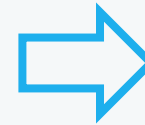
Shear-thickening fluids can be tuned using vibrations (in real time) and are being incorporated into novel applications such as body armour



Flexible sensors enable a range of sensing capabilities on conformable surfaces



The optimal compression force profile over the chest area for specific hemodynamic responses varies significantly among patients



A conformable CPR device that measures CPR parameters to optimise compression depth and release, so reducing risk of injury to patient

Data and algorithms augment and enhance the human ability to invent

Innovation Challenges and Data-Driven Invention



Exponential growth of information



Limited information review for individuals



“Burden of knowledge”
vs
“Product convergence”



ROBUST & REAL TIME

- Over 1 Billion inventive elements
- Senses and connects inventive signals in real time

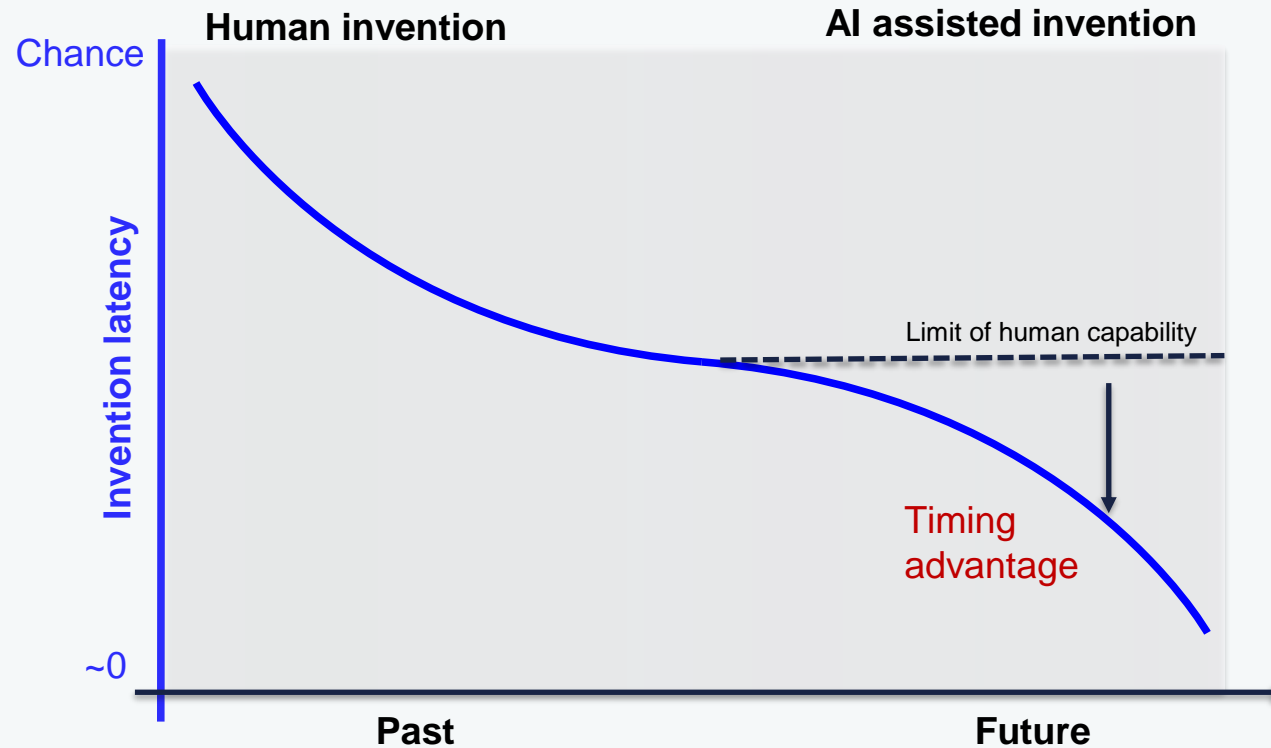
AUGMENT HUMAN CAPABILITIES

- >20 x more efficient than conventional teams
- Data & algorithms make innovation systematic

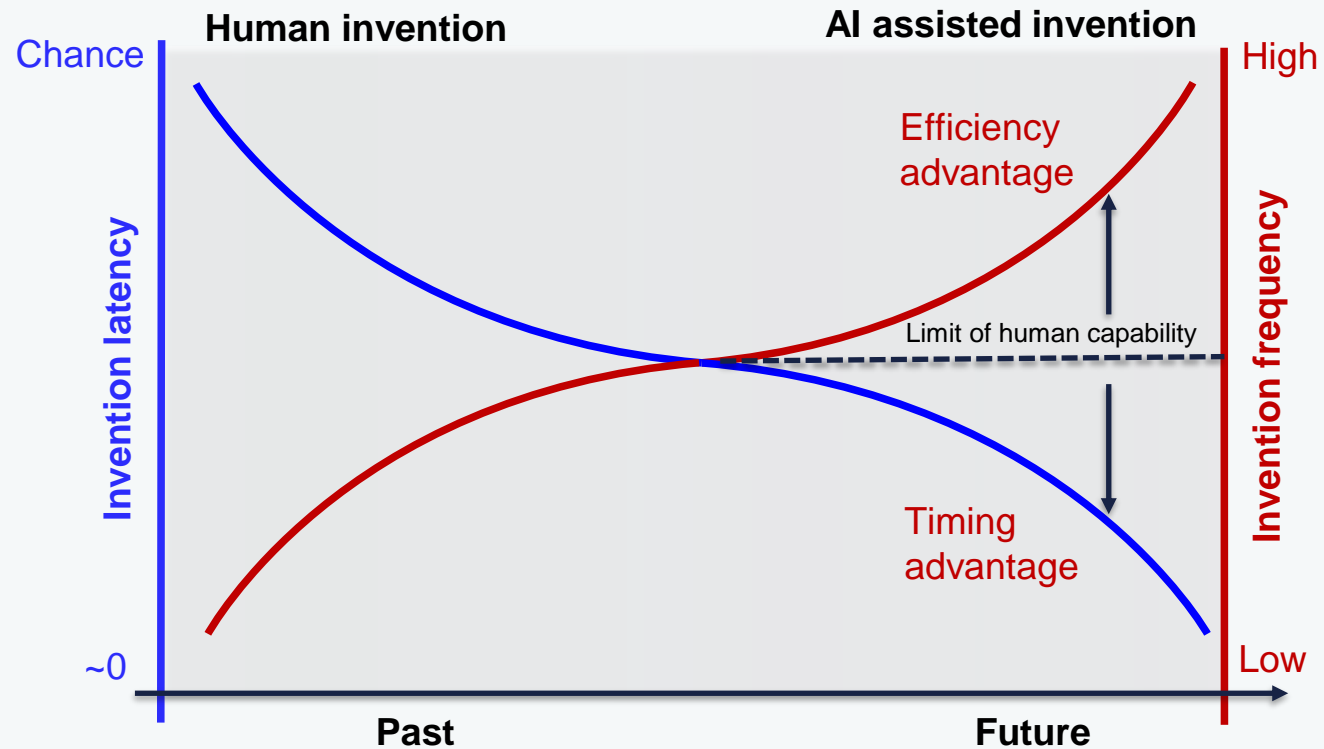
IMPACT*

- > 3 x forward looking commercialization prospects
- > 2 x more patentable subject matter
- Best invention

Past, present and future – cross domain



Past, present and future – cross domain





Data vs Serendipity

- Chance information discovery and connection being replaced by tools
- Innovation advantage shifting from the best people to the best tools
- Iprova prediction (made in 2019) : by end 2025 over 50% of all inventions will be created with the help of tools.

iprova.com

hello@iprova.com



Lausanne



London



Cambridge



San Jose



Tokyo