

Use of Various Tools, Including AI, for Effective Patent Examination Procedure

SCP36, 2024

Japan Patent Office

MORIOKA Toshiyuki



1. Action Plan for Utilization of AI Technology

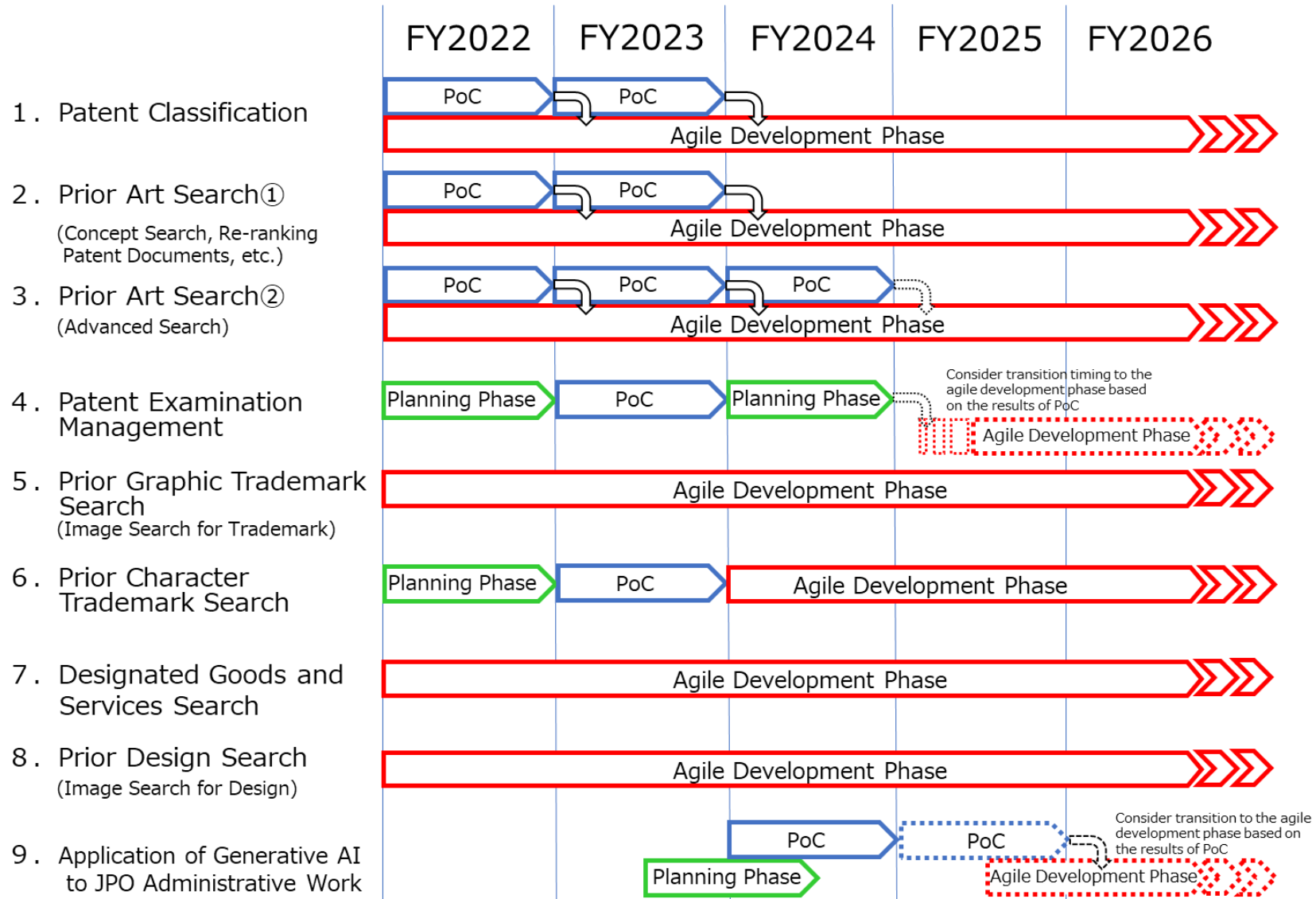
2. Advanced Search Tools

3. Examination Case Examples on AI-related Technologies

4. Support Team for AI Examination

Action Plan for Utilization of AI Technology

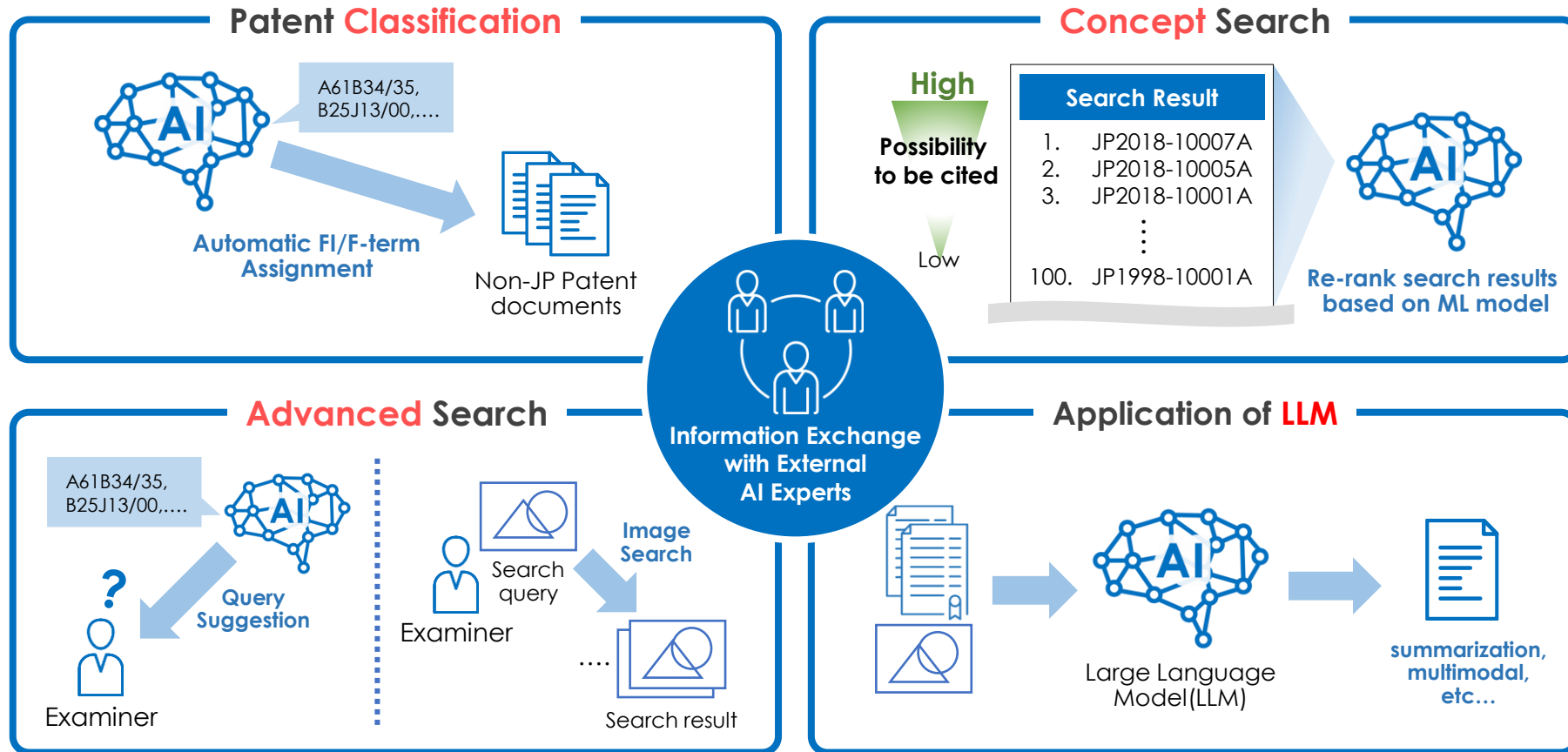
Action Plan for Utilization of AI Technology (Rev.2024)



(※) The initiatives of each project are rough assumptions and may change in the future depending on the progress, budget conditions, and other various circumstances.

AI Utilization to Improve Quality and Efficiency

In-house development of patent examination support system using **AI**

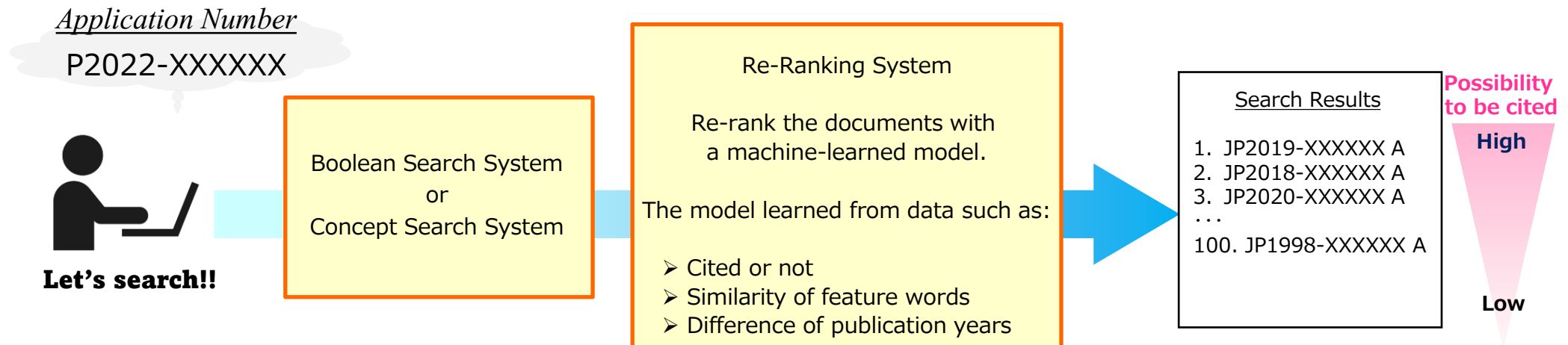


https://www.jpo.go.jp/e/system/laws/sesaku/ai_action_plan/index.html

Advanced Search Tools

Advanced Search Tools ~ Concept Search and Re-Ranking ~

- ◆ It is hard to read a vast number of the relevant documents retrieved.
- ◆ The “Concept Search and Re-Ranking System” enables examiners to read the most important documents first.



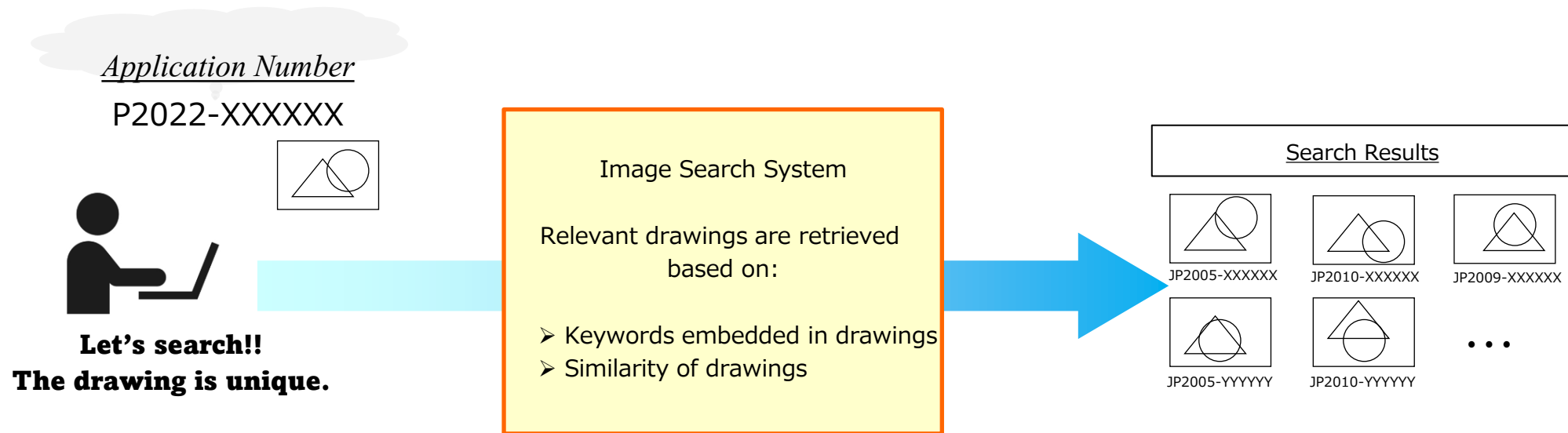
Note:

- ✓ **Examiners can find the most important documents quickly.**
- ✓ **Using this tool is not sufficient to carry out an adequate search.**



Advanced Search Tools ~ Image Search ~

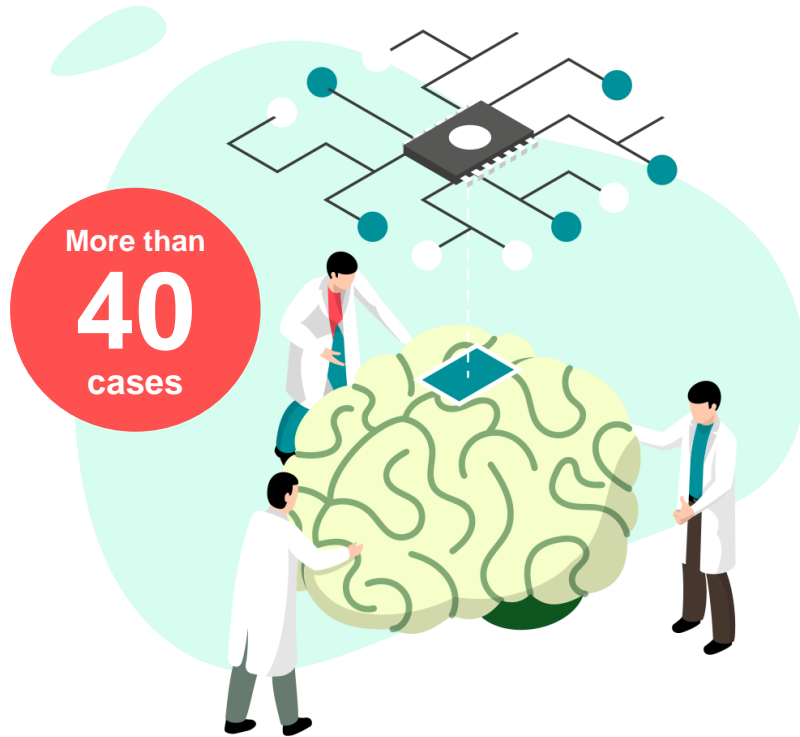
- ◆ Sometimes drawings contain very important information, so text search queries are not so effective to retrieve such useful drawings.
- ◆ The information originating from drawings of the application is thought to be useful to obtain the relevant drawings.



Examination Case Examples on AI-related Technologies

Examination Case Examples on AI technologies

Patent Examination Case Examples on AI-related inventions



Clear understanding of examination practices

Patent eligibility, Inventive step,
Description requirements...



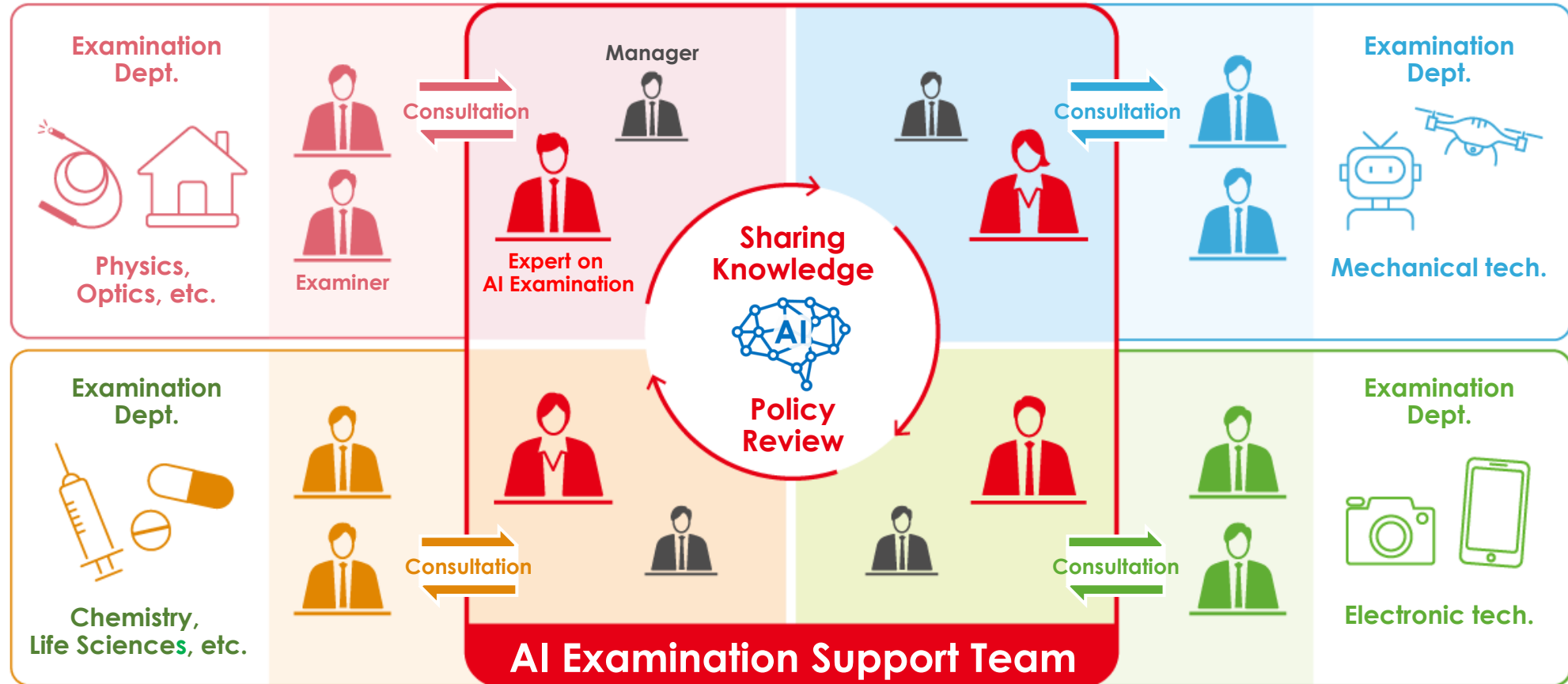
- ◆ Patent Examination Case Examples pertinent to AI-related technologies

https://www.jpo.go.jp/e/system/laws/rule/guideline/patent/ai_jirei_e.html

※These case examples are hypothetical.

Support Team for AI Examination

Support Team for AI Examination



https://www.meti.go.jp/english/press/2023/0921_001.html

https://www.meti.go.jp/english/press/2024/0328_002.html

Enhancing a system for the team

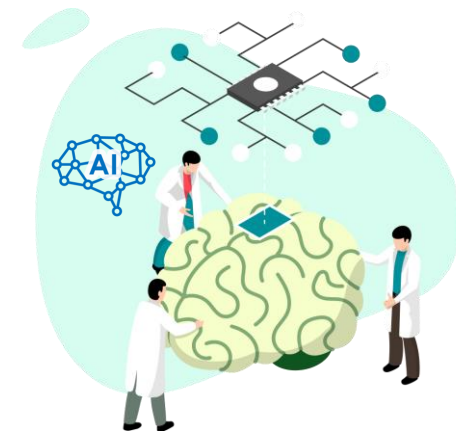
- ◆ On October 1, 2023, **JPO increased the number of experts on AI examination from 13 to 39**, and assigned at least one expert on AI examination to all examination offices.

⇒The team appropriately supports examinations of AI-related inventions even in fields where AI technology has not been frequently used.

- ◆ On April 1, 2024, **JPO established a new position for external experts called AI advisors** who provide support (e.g., technological training and responses to inquiries) to patent examiners, including experts on AI examination, in accessing expert knowledge on AI-related technology.

https://www.meti.go.jp/english/press/2023/0921_001.html

https://www.meti.go.jp/english/press/2024/0328_002.html



Thank you!

