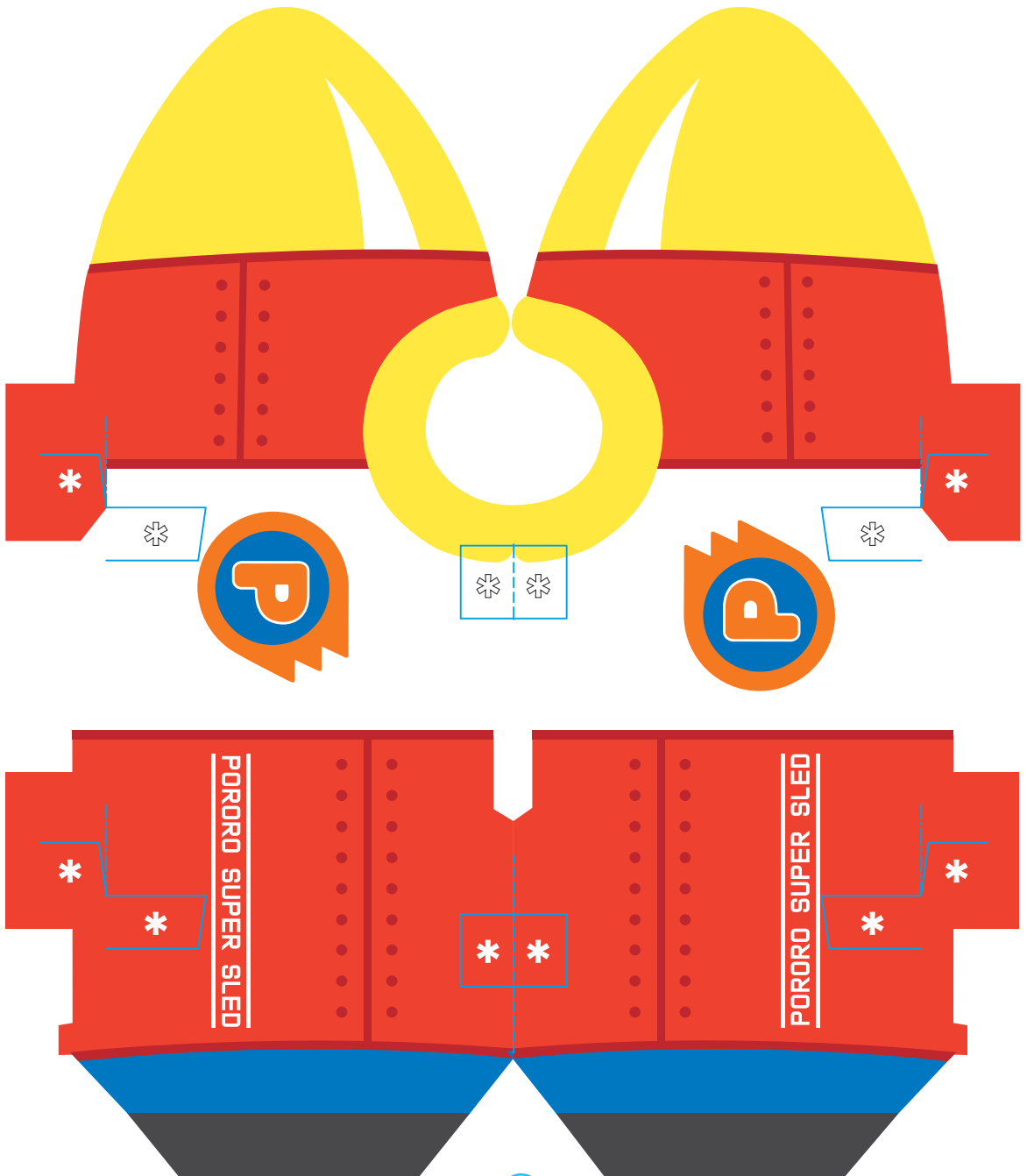
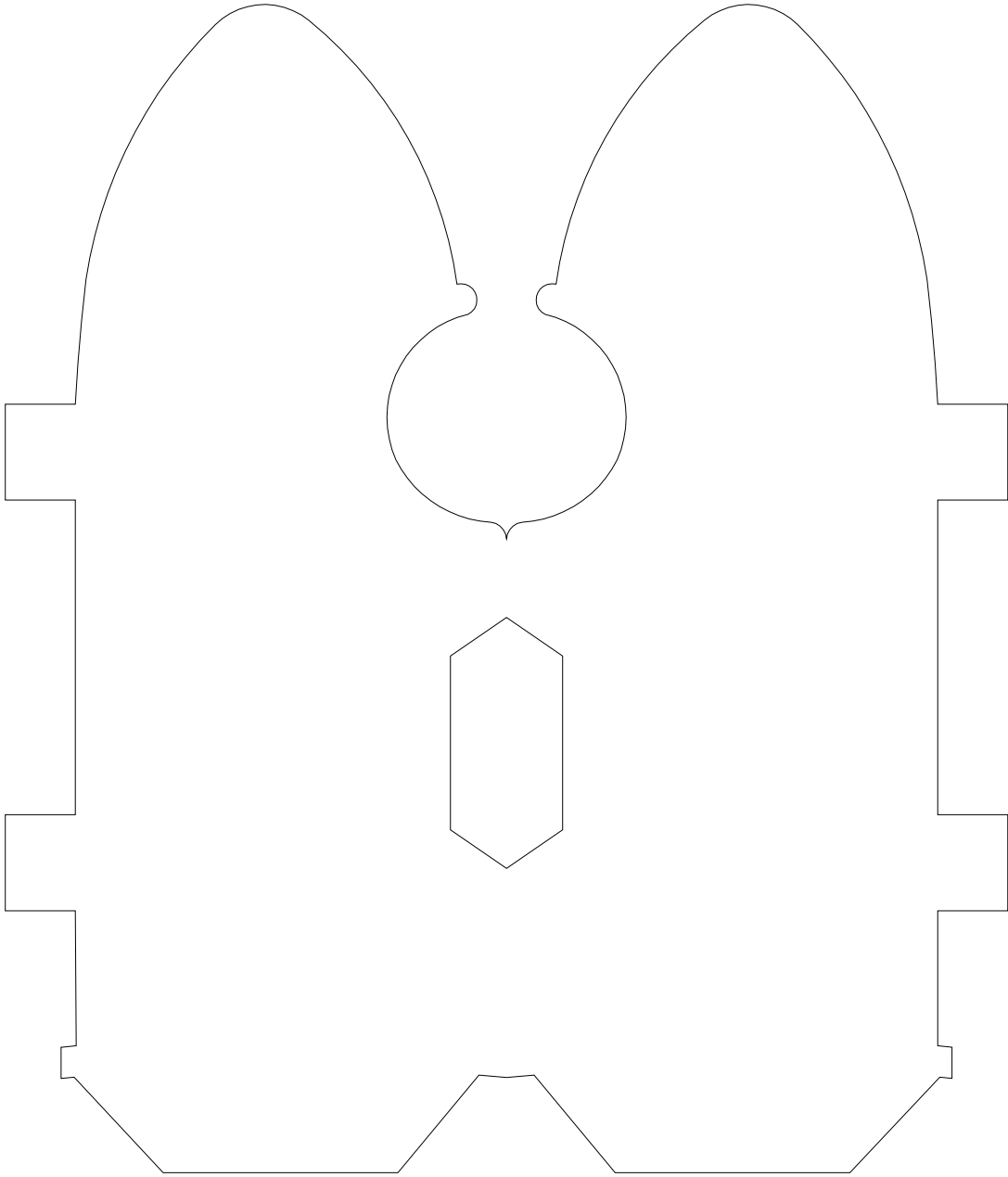


PAPER SLED

- * Glue
- - - Mountain Fold
- - - Valley Fold
- Cut Line

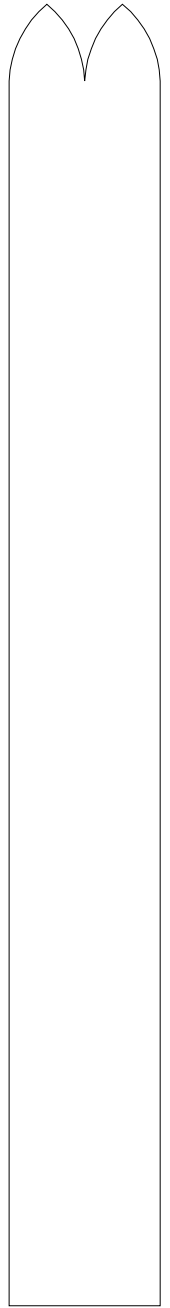
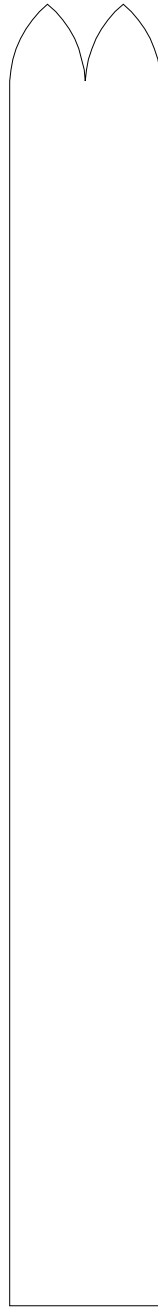
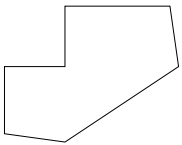
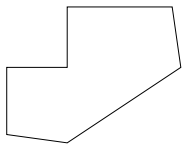
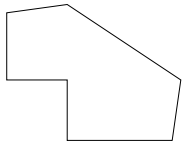
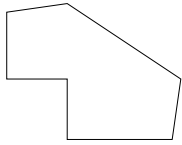




PAPER SLED

* Glue
- - - - Mountain Fold
- - - - Valley Fold
— — — — Cut Line

The image shows 13 numbered templates for making paper sleds on a yellow background. Each template consists of a central vertical line with various flaps and fold lines. Asterisks indicate where to apply glue. The sleds are numbered 2 through 13. Sleds 10, 11, and 12 have additional side flaps. The templates are arranged in a grid-like fashion, with sleds 2, 3, and 4 at the top, sleds 5, 6, 7, 8, and 9 in the middle, and sleds 10, 11, 12, and 13 at the bottom.



PAPER SLED

- * Glue
- - - Mountain Fold
- - - Valley Fold
- Cut Line

