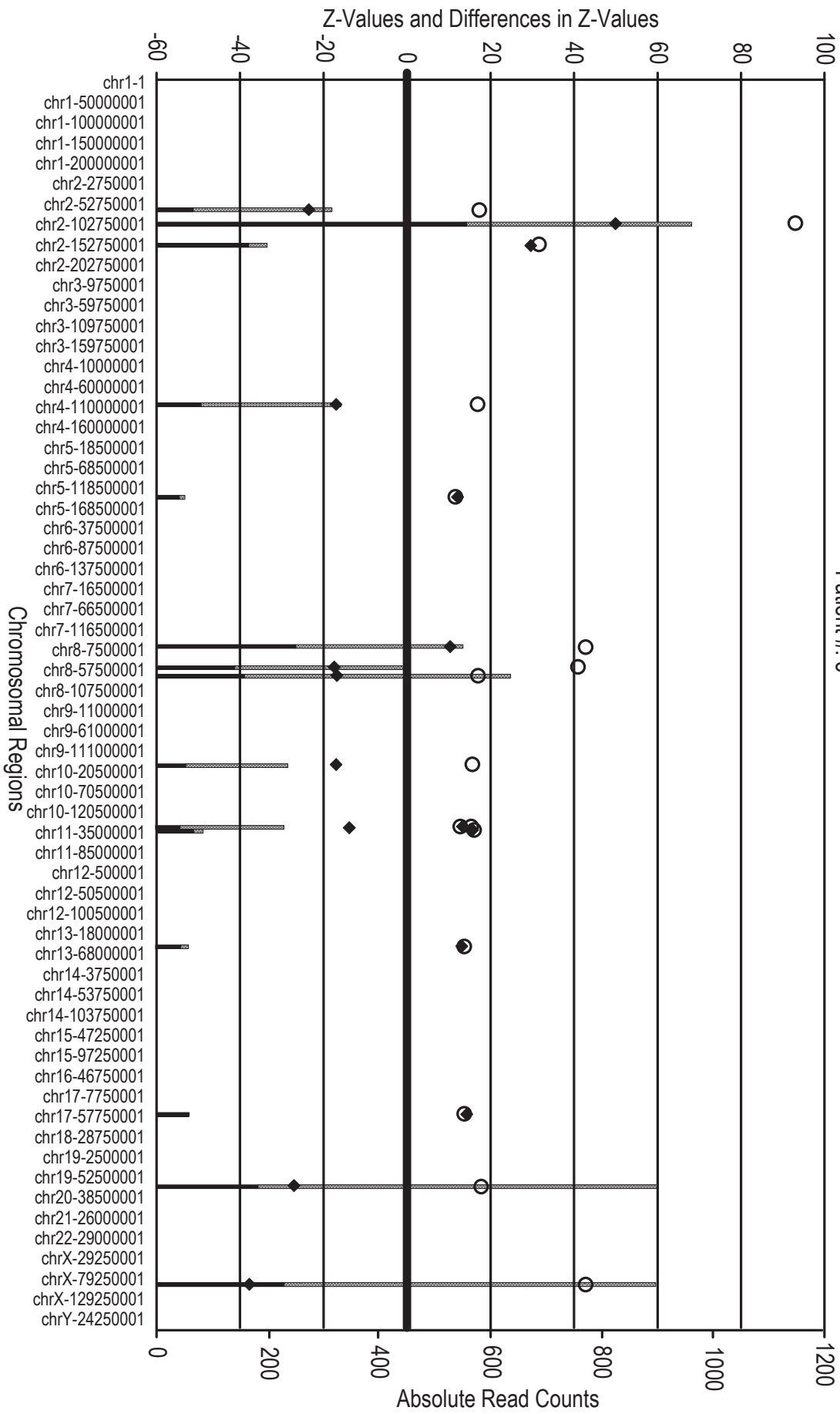


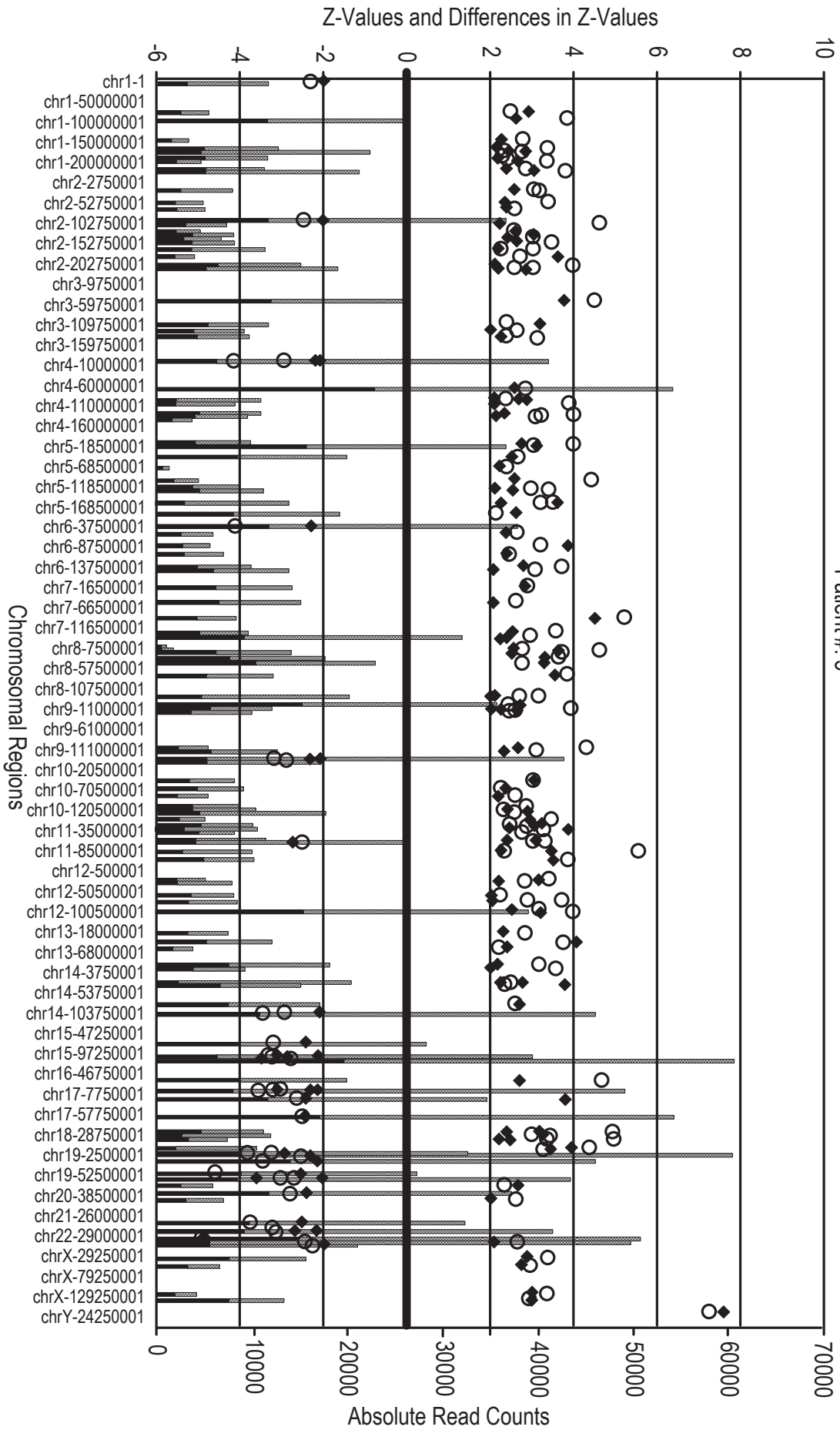
Patient 5 – With Alu filtering

Patient #: 5

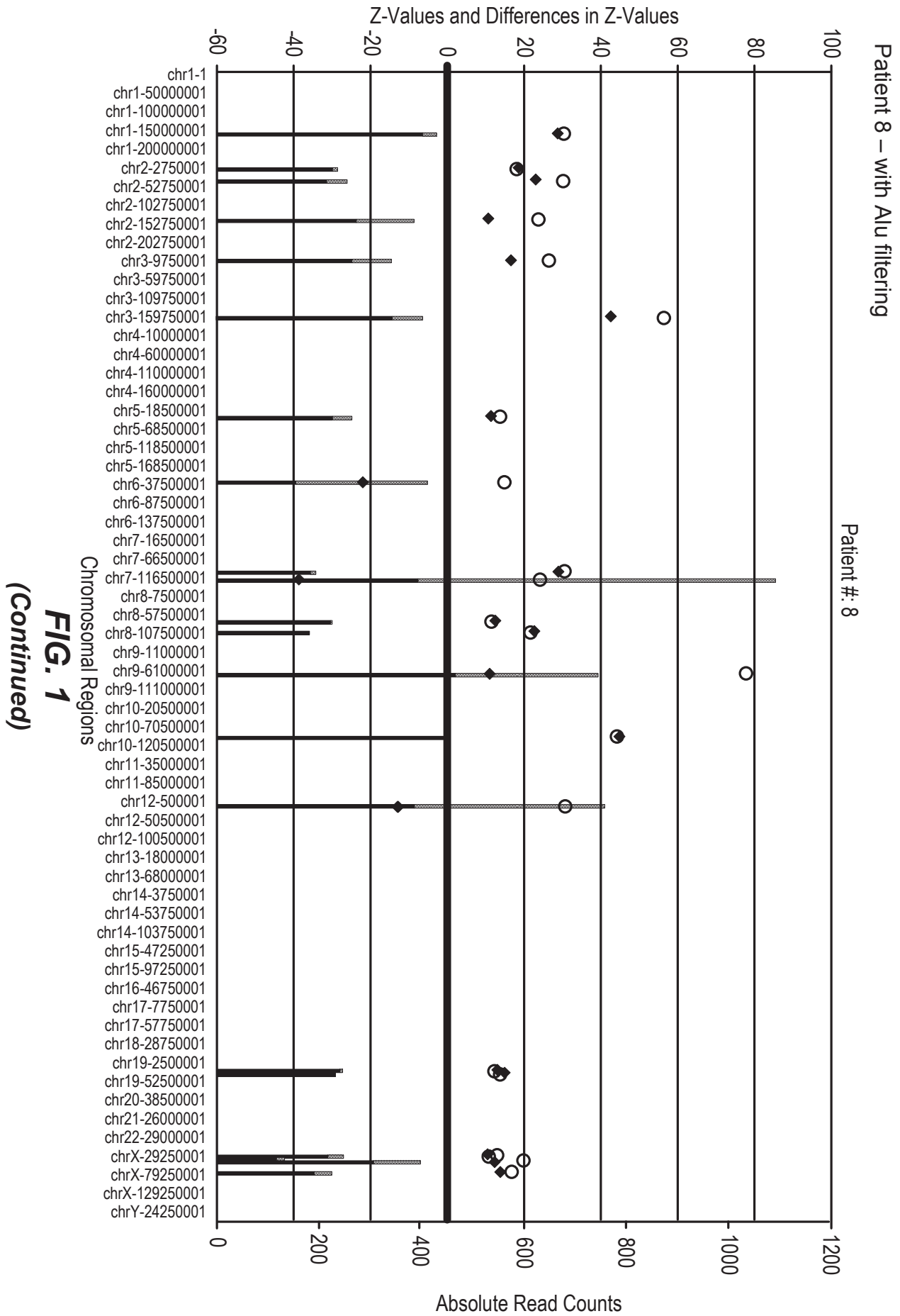
**FIG. 1**

Patient 5 – without Alu filtering

Patient #: 5

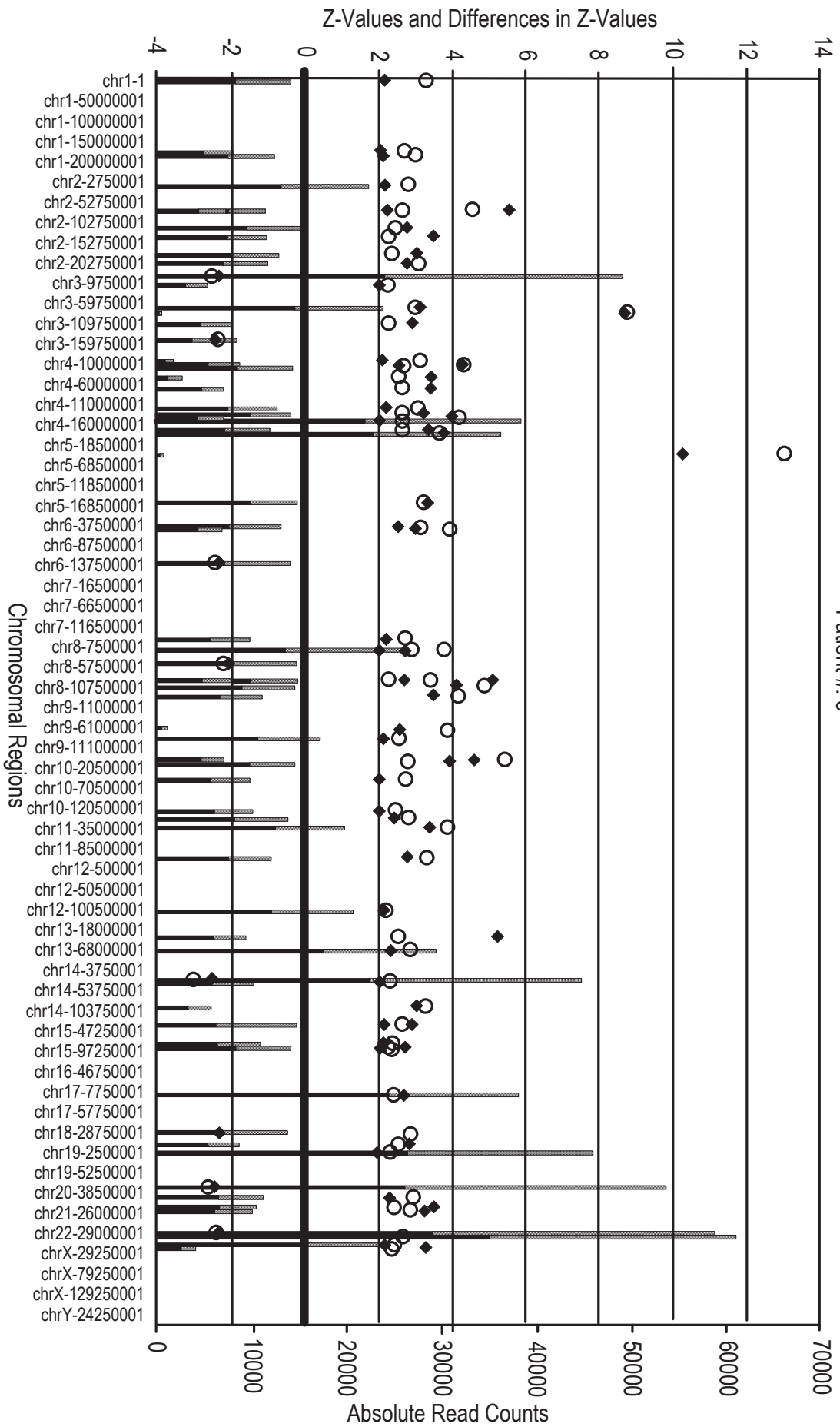
**FIG. 1**

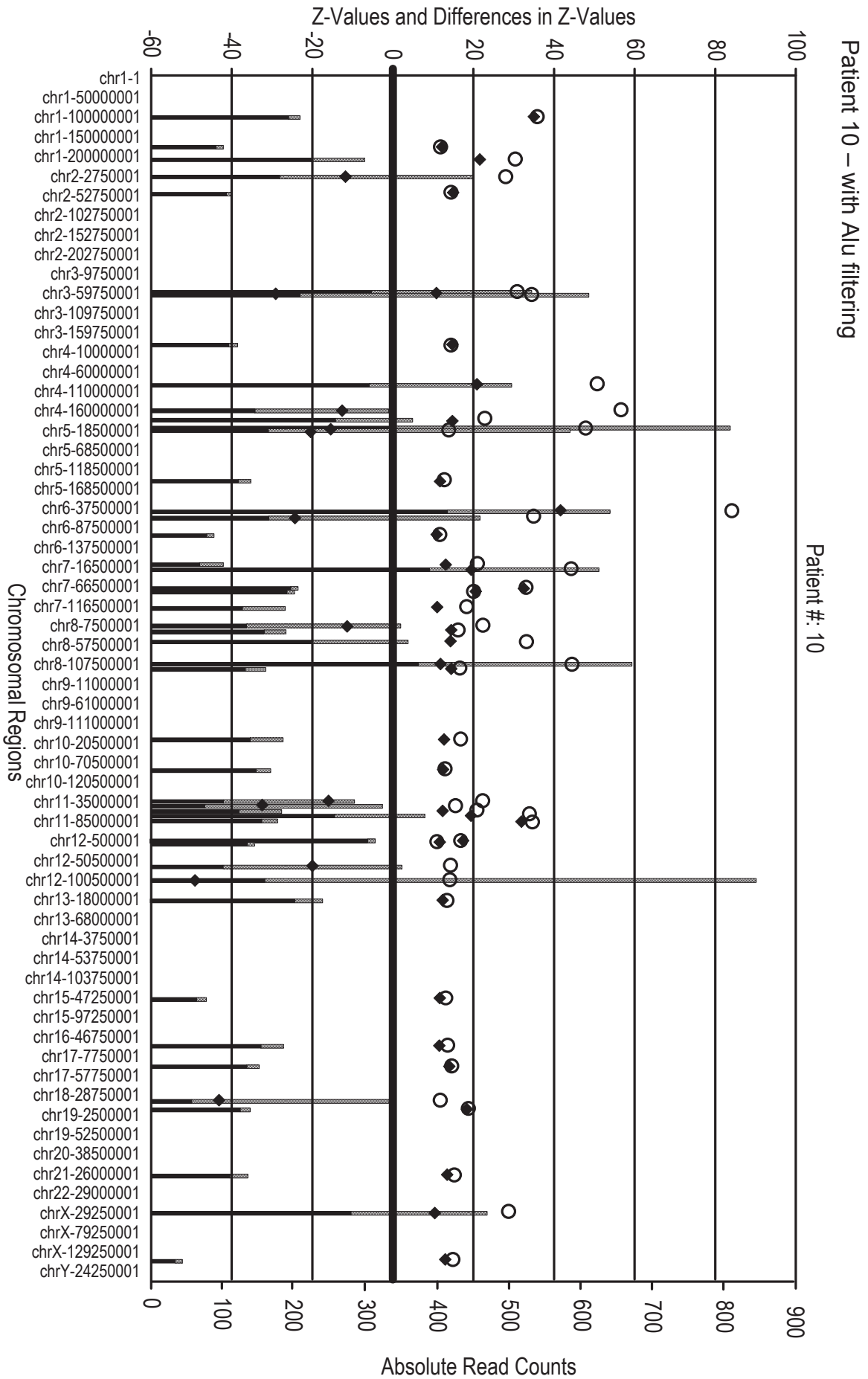
(Continued)



Patient 8 – without Alu filtering

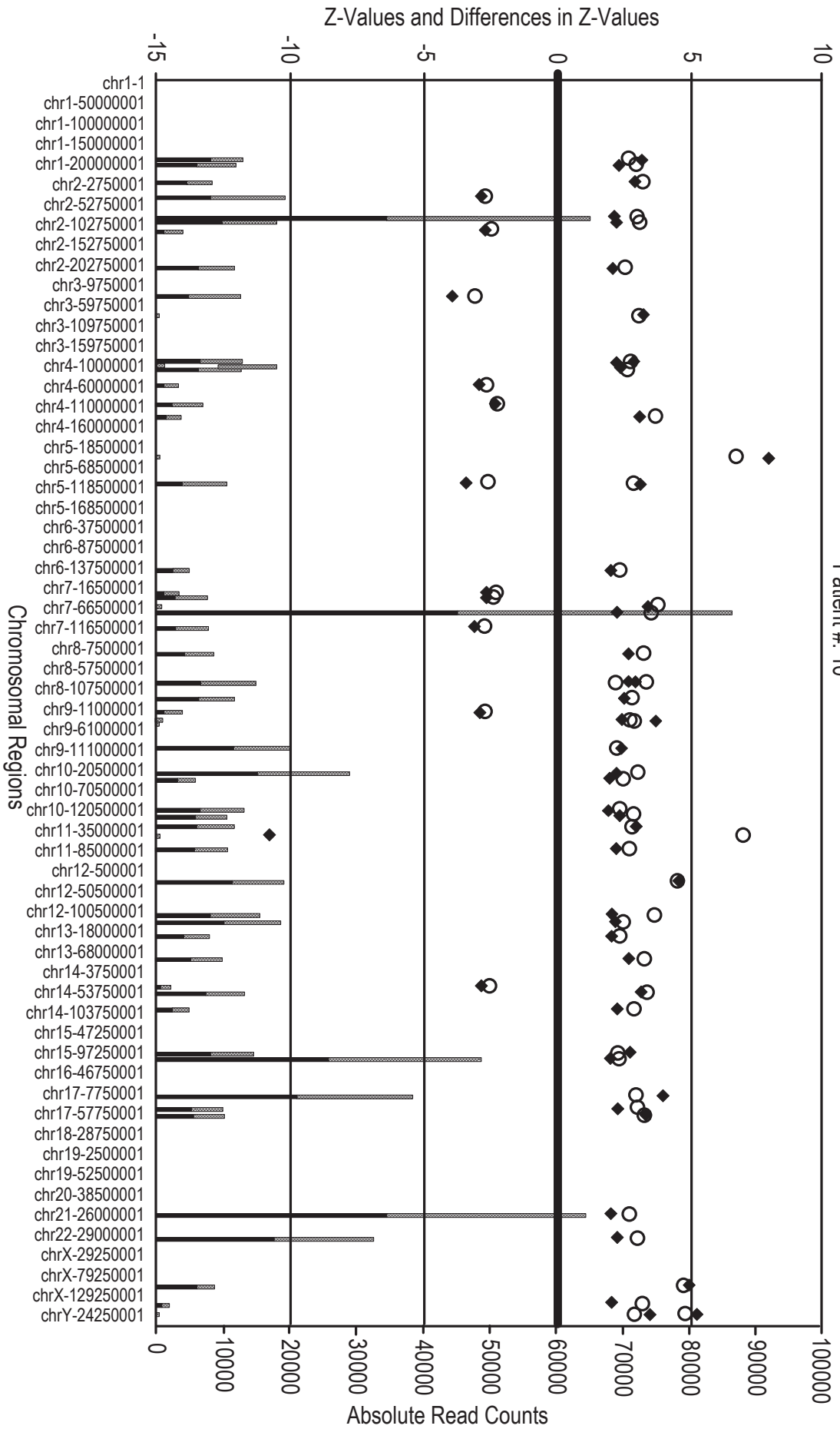
Patient #: 8



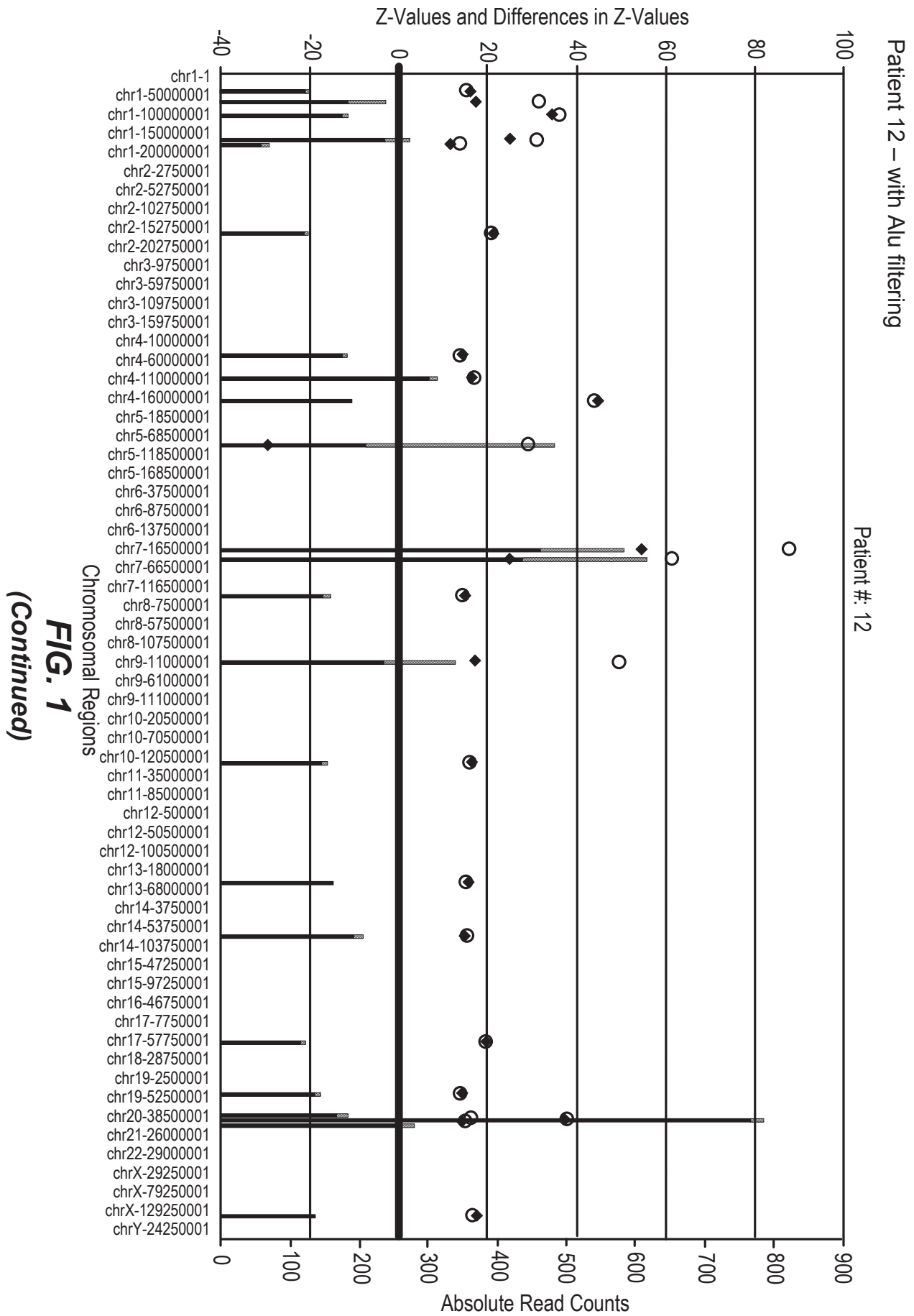


Patient 10 – without Alu filtering

Patient #: 10

**FIG. 1**

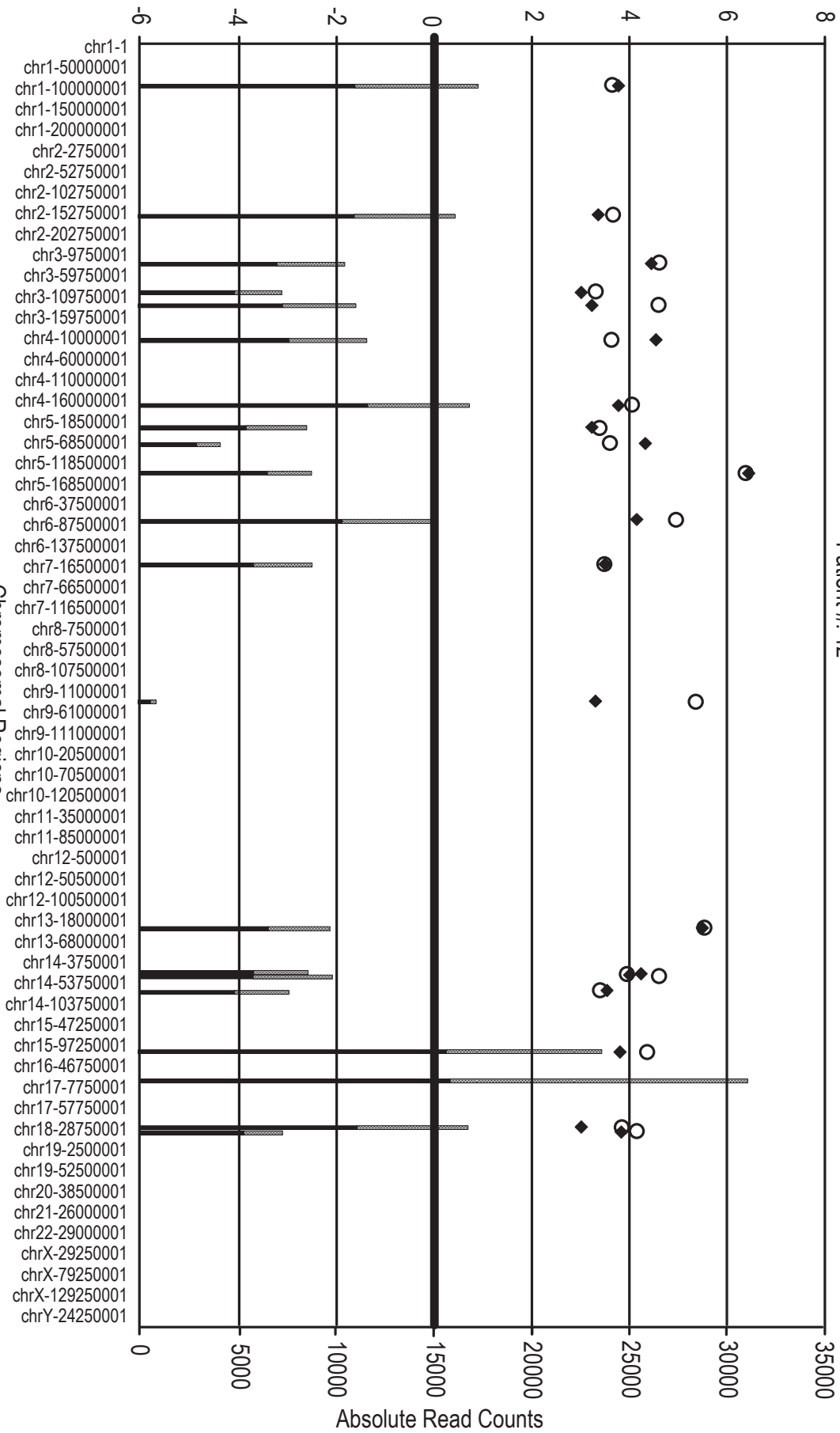
(Continued)



Z-Values and Differences in Z-Values

Patient 12 – without Alu filtering

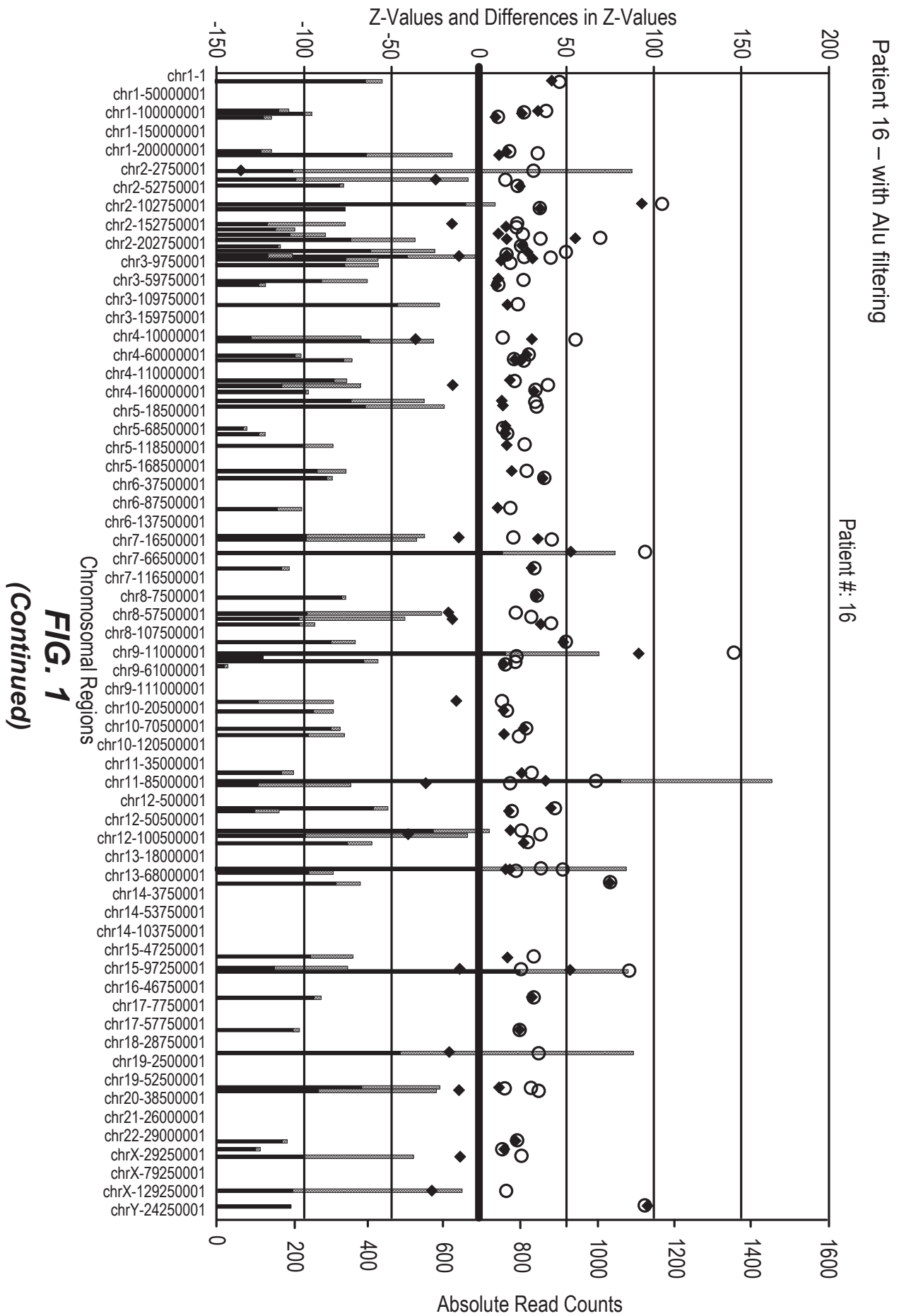
Patient #: 12



Chromosomal Regions

FIG. 1

(Continued)



Z-Values and Differences in Z-Values

Patient 16 – without Alu filtering

Patient #: 16

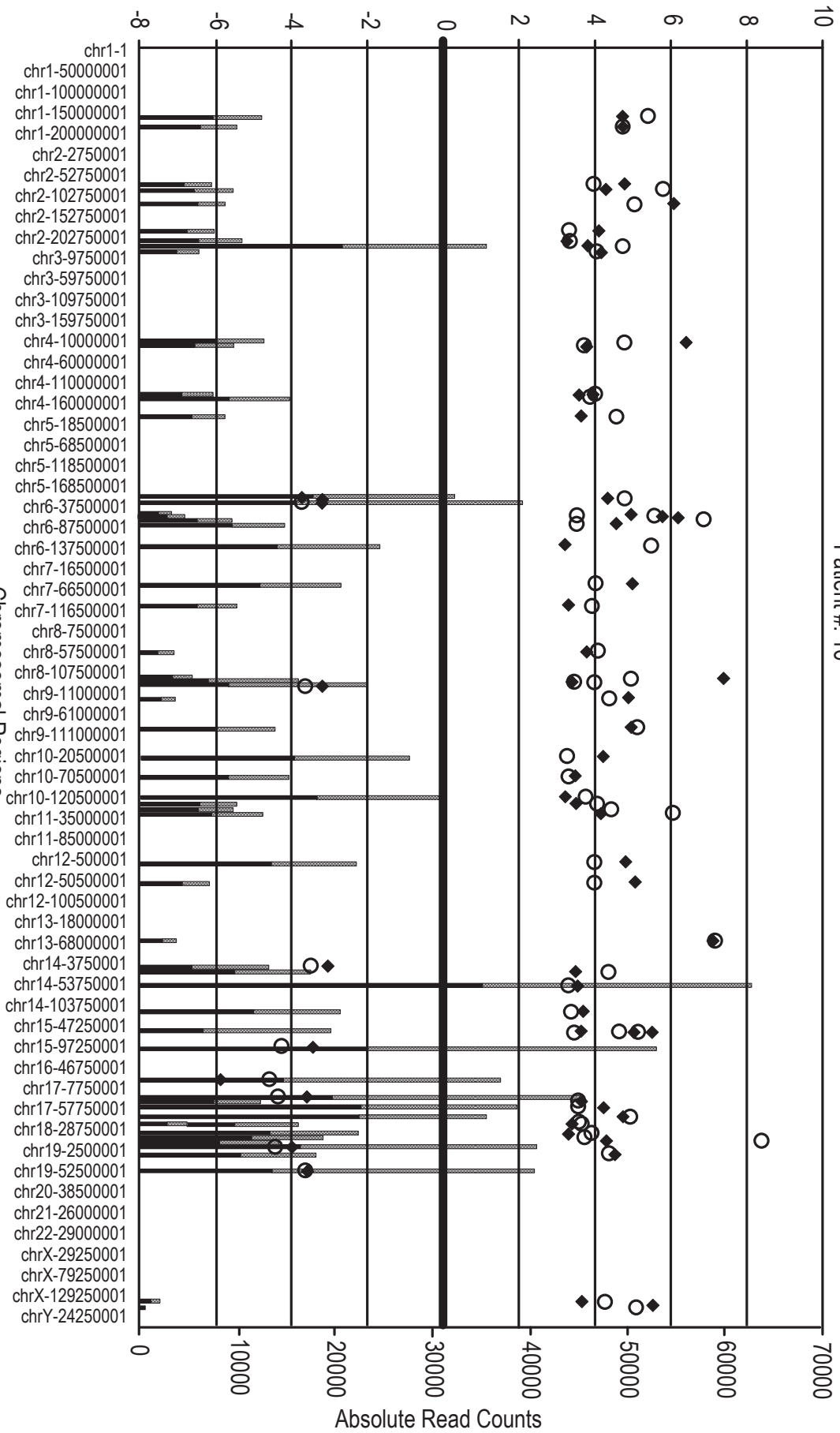
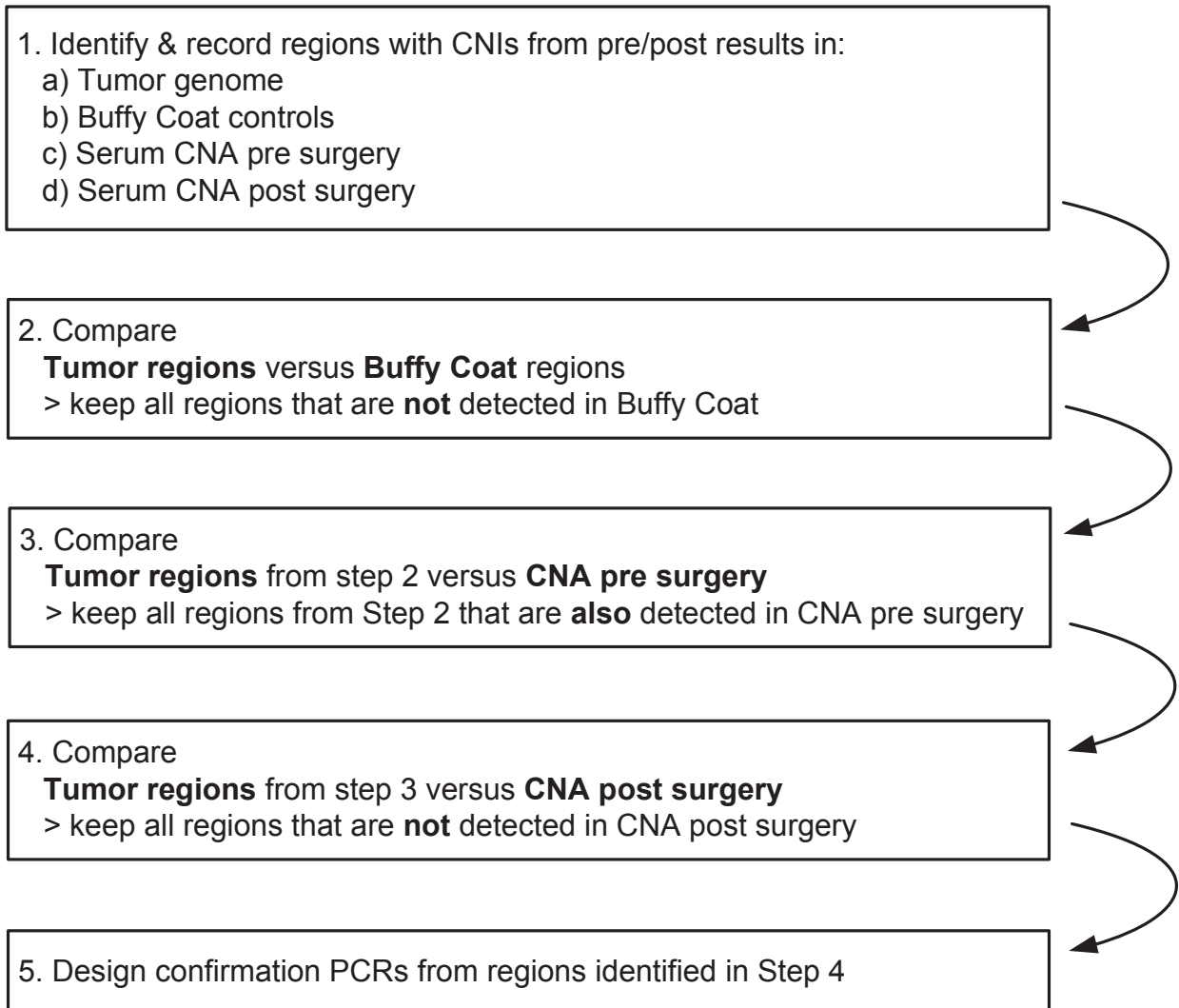
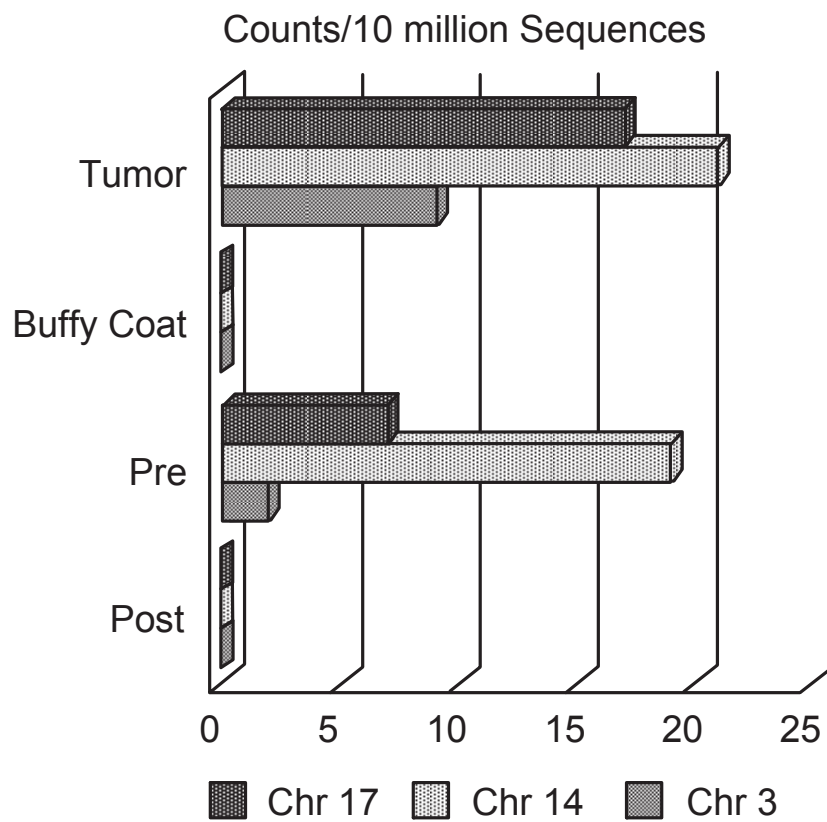
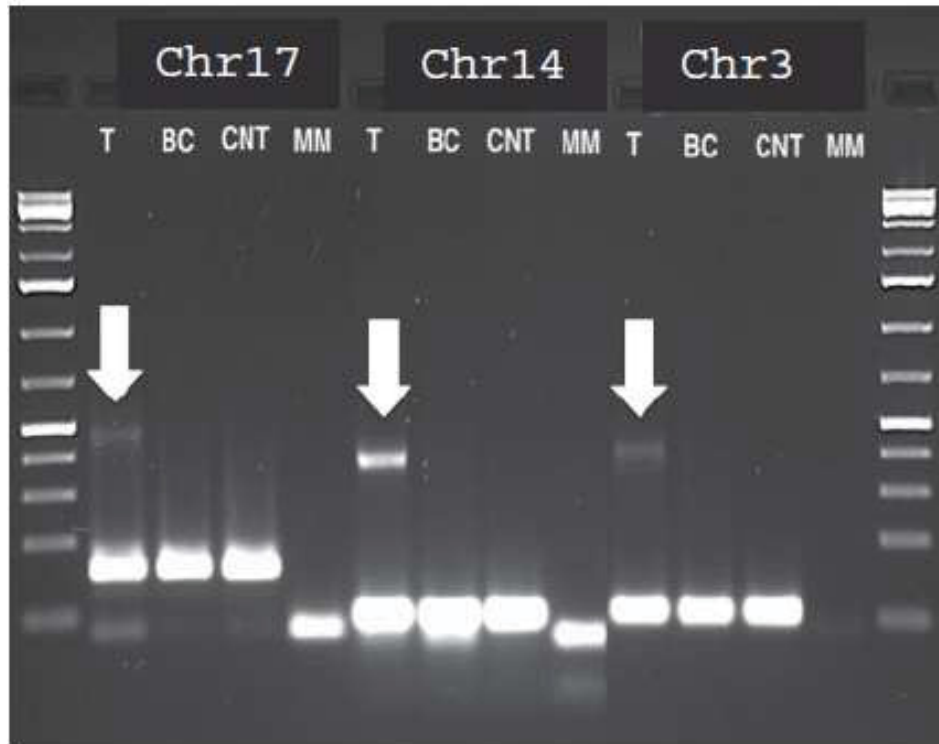
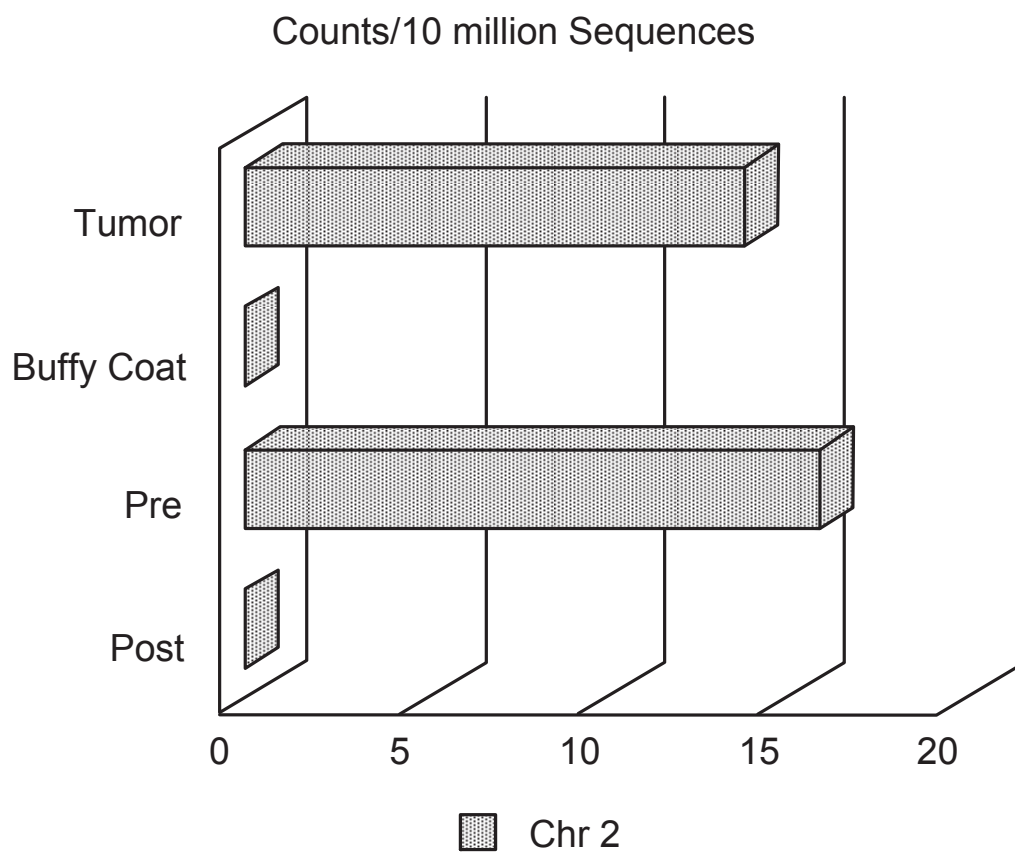
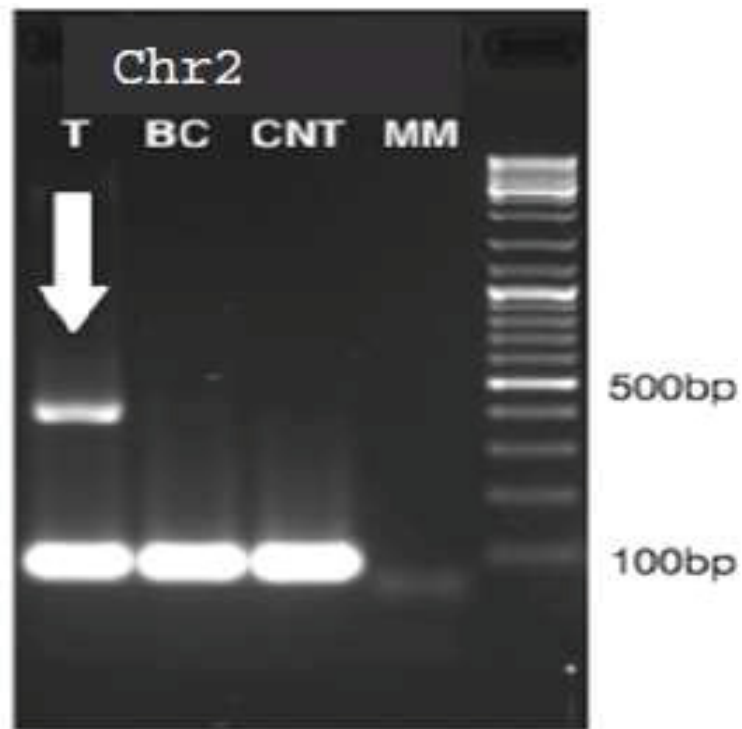
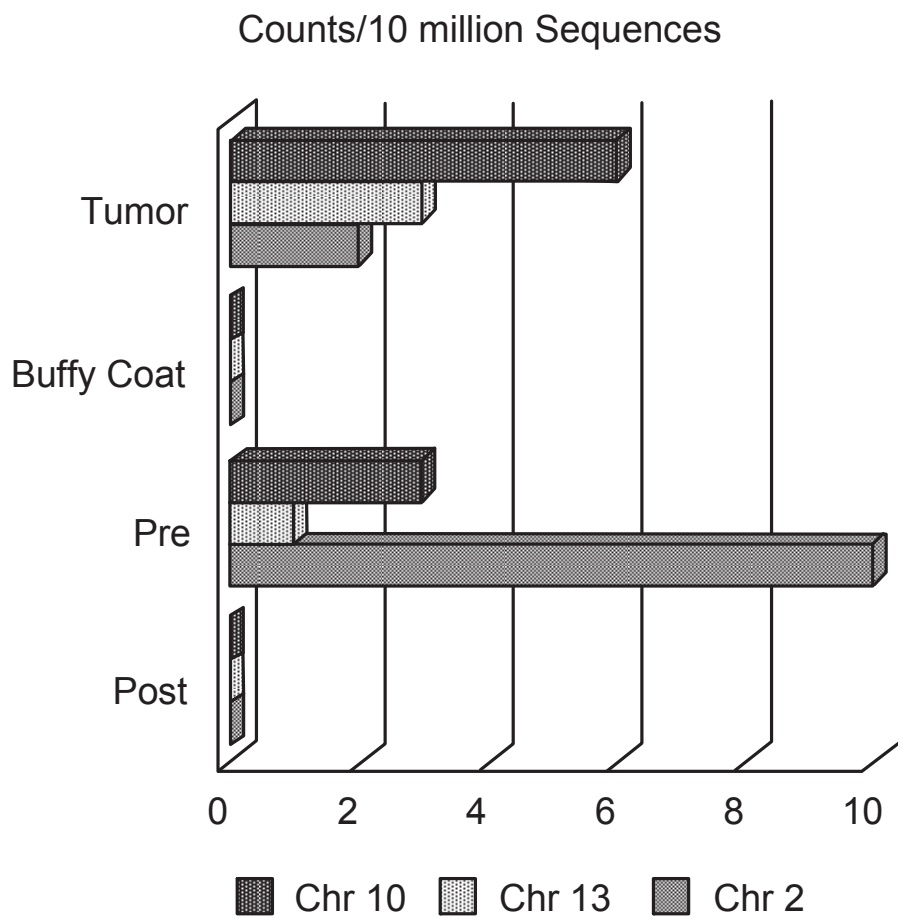
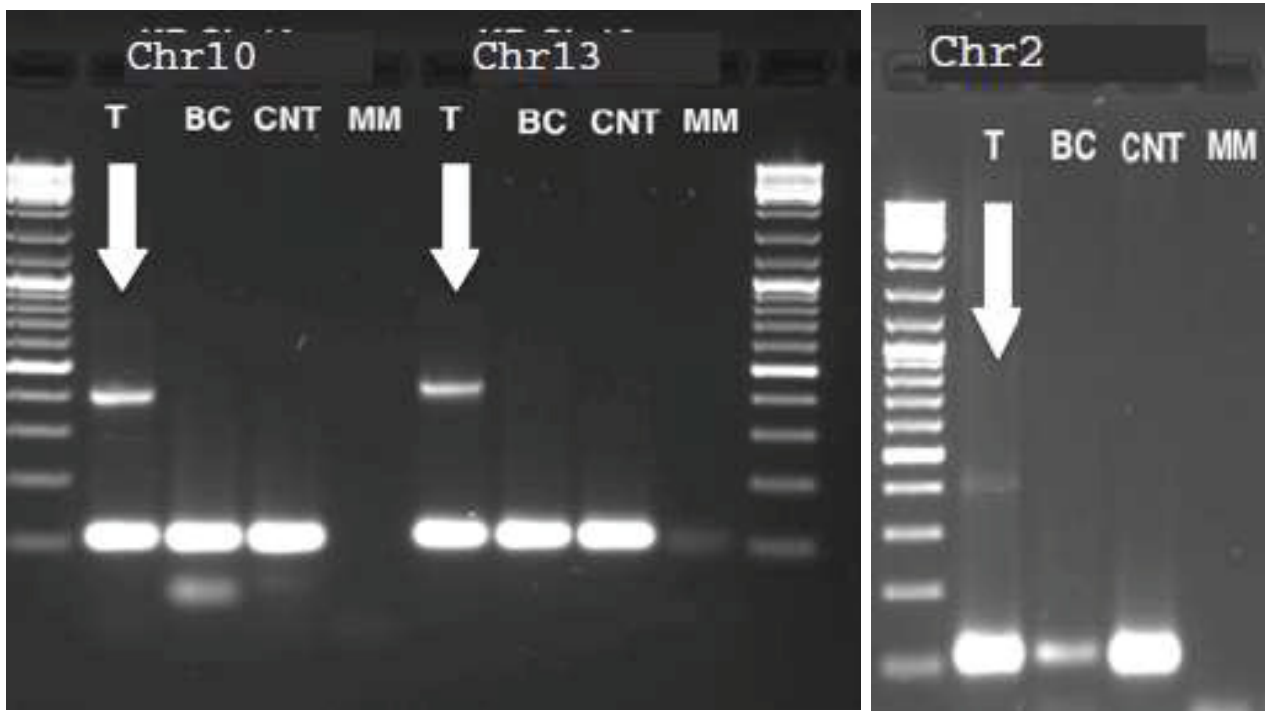


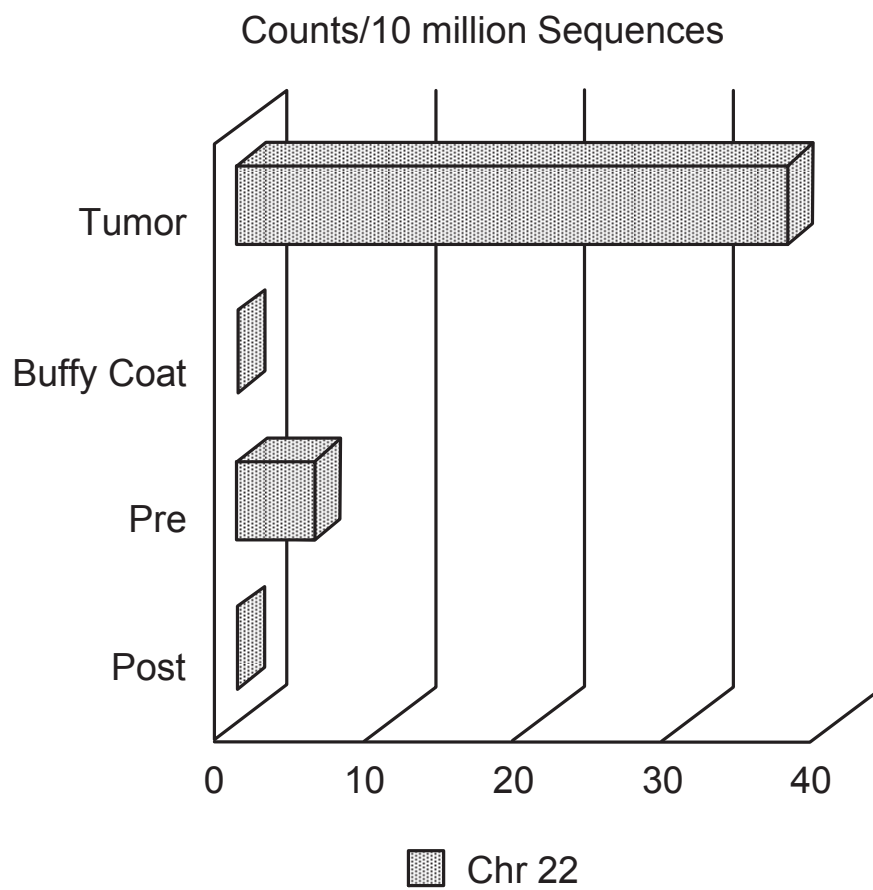
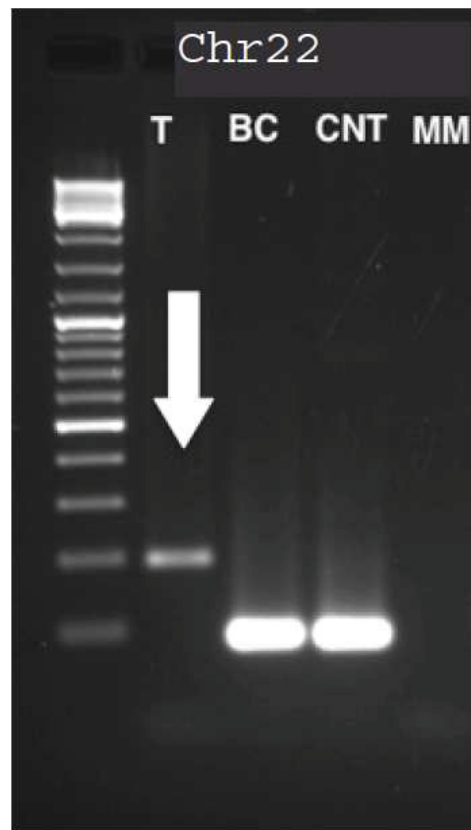
FIG. 1
(Continued)

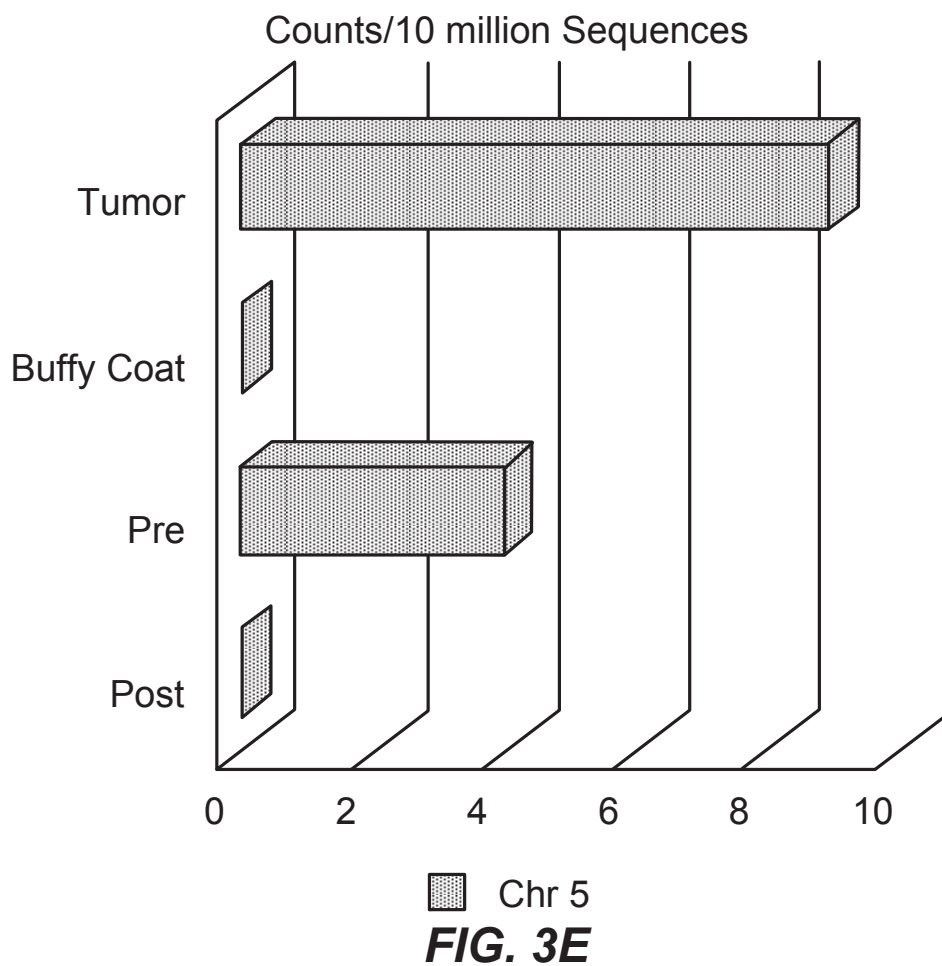
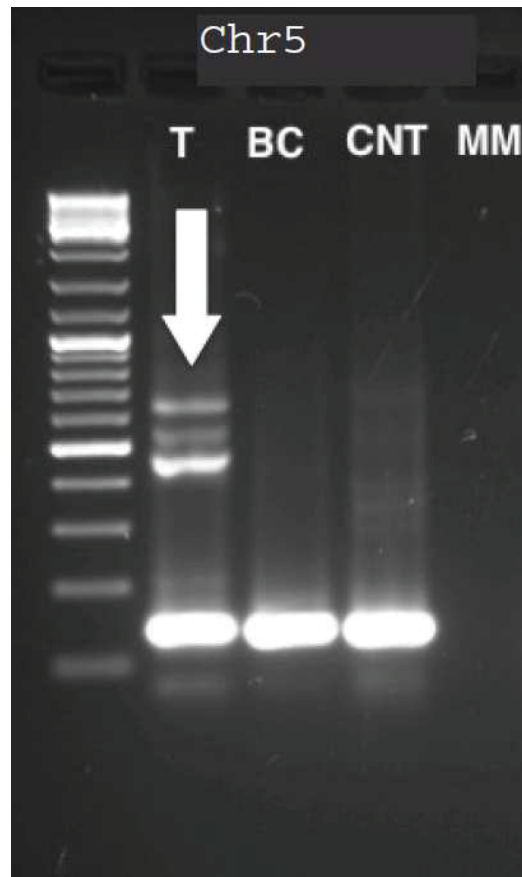
**FIG. 2**

**FIG. 3A**

**FIG. 3B**

**FIG. 3C**

**FIG. 3D**



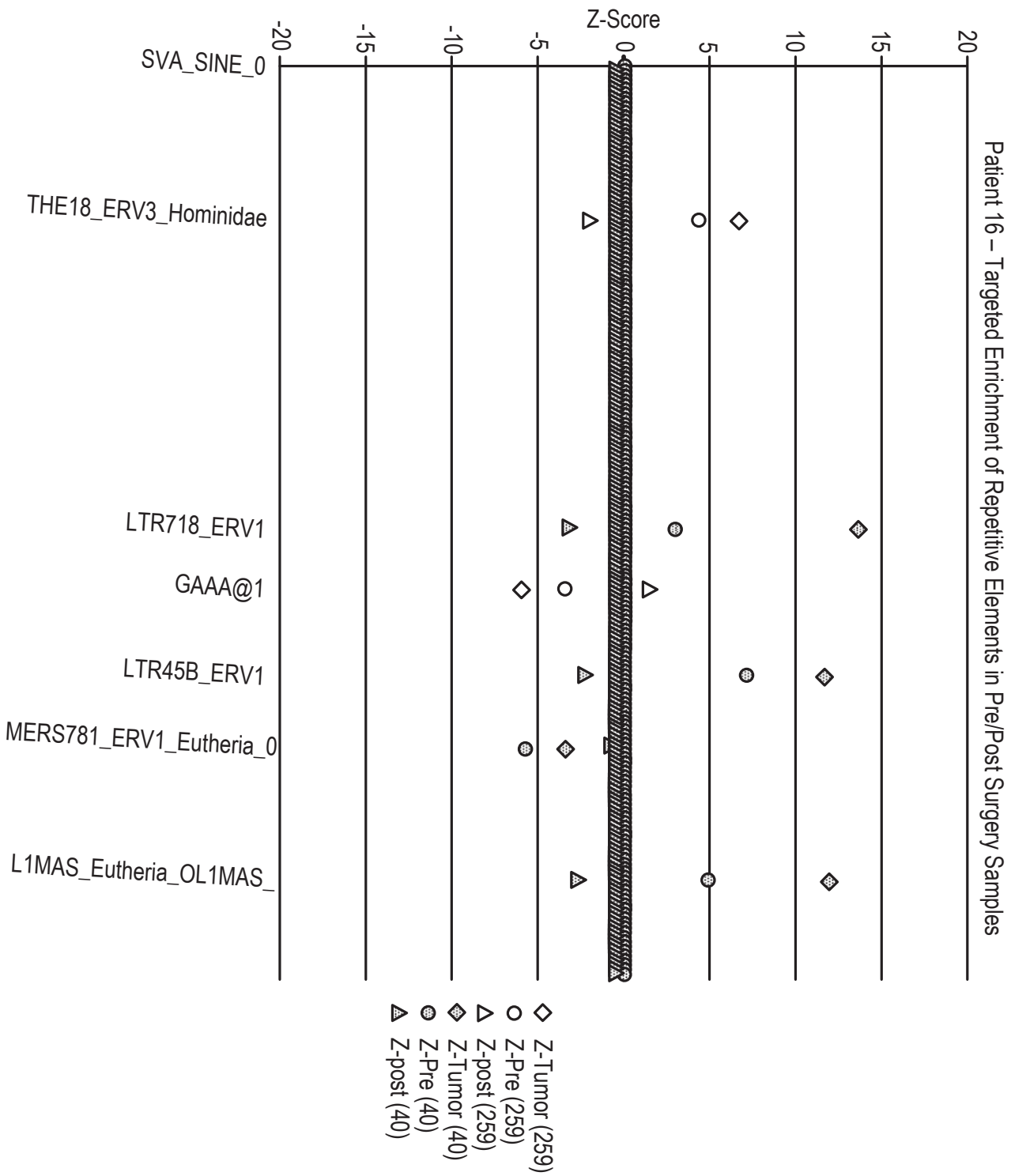


FIG. 4A

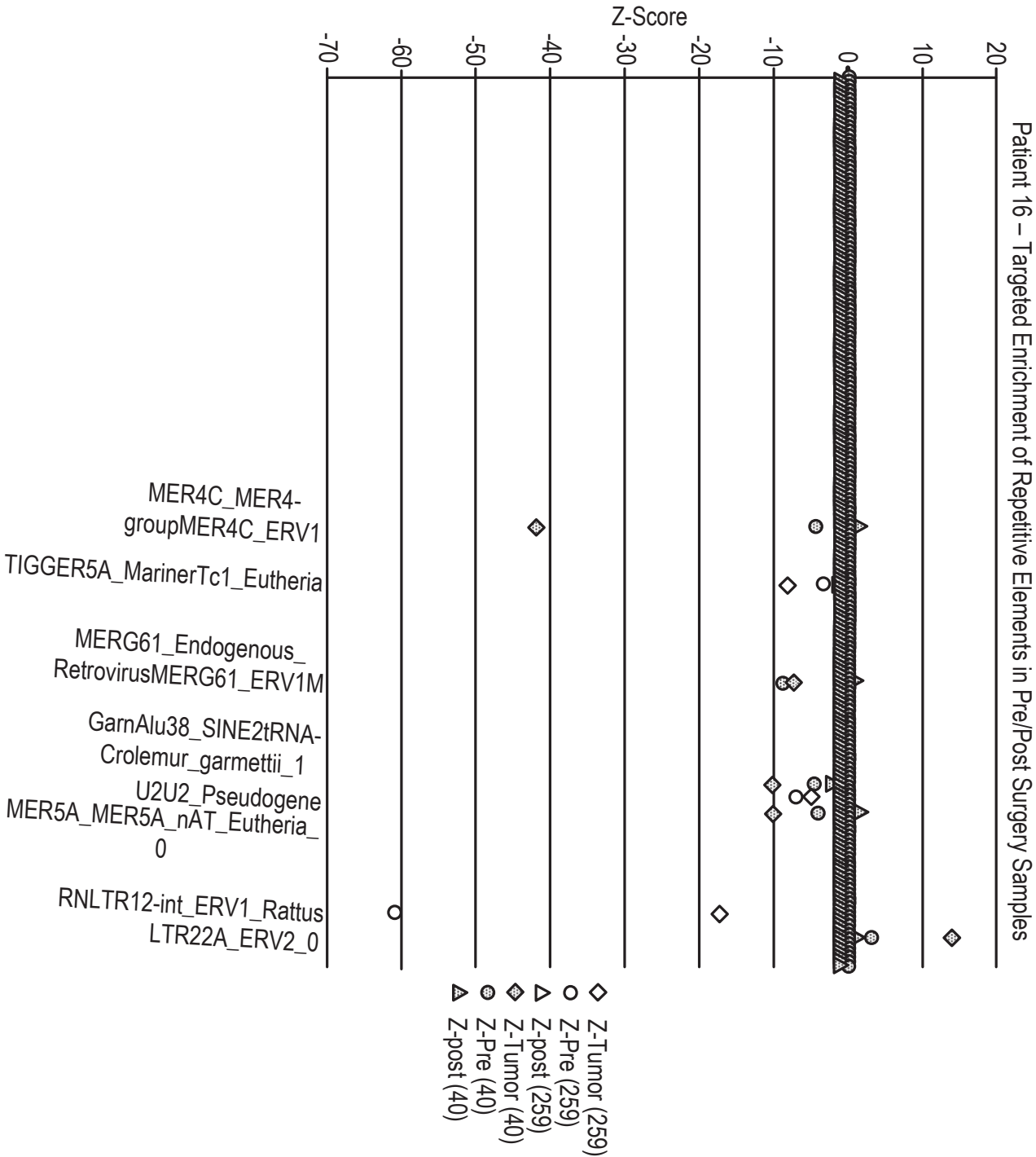


FIG. 4B

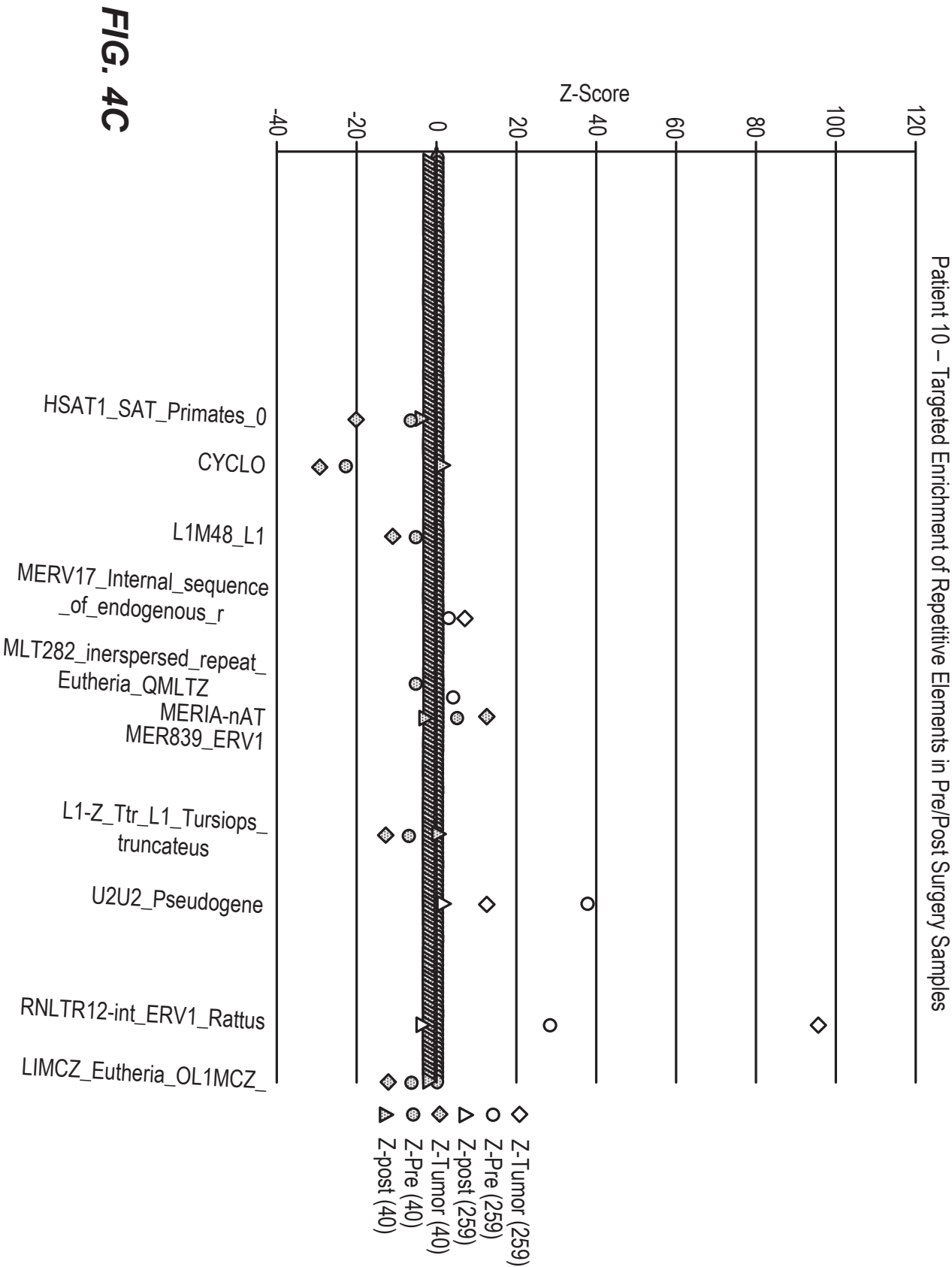


FIG. 4C

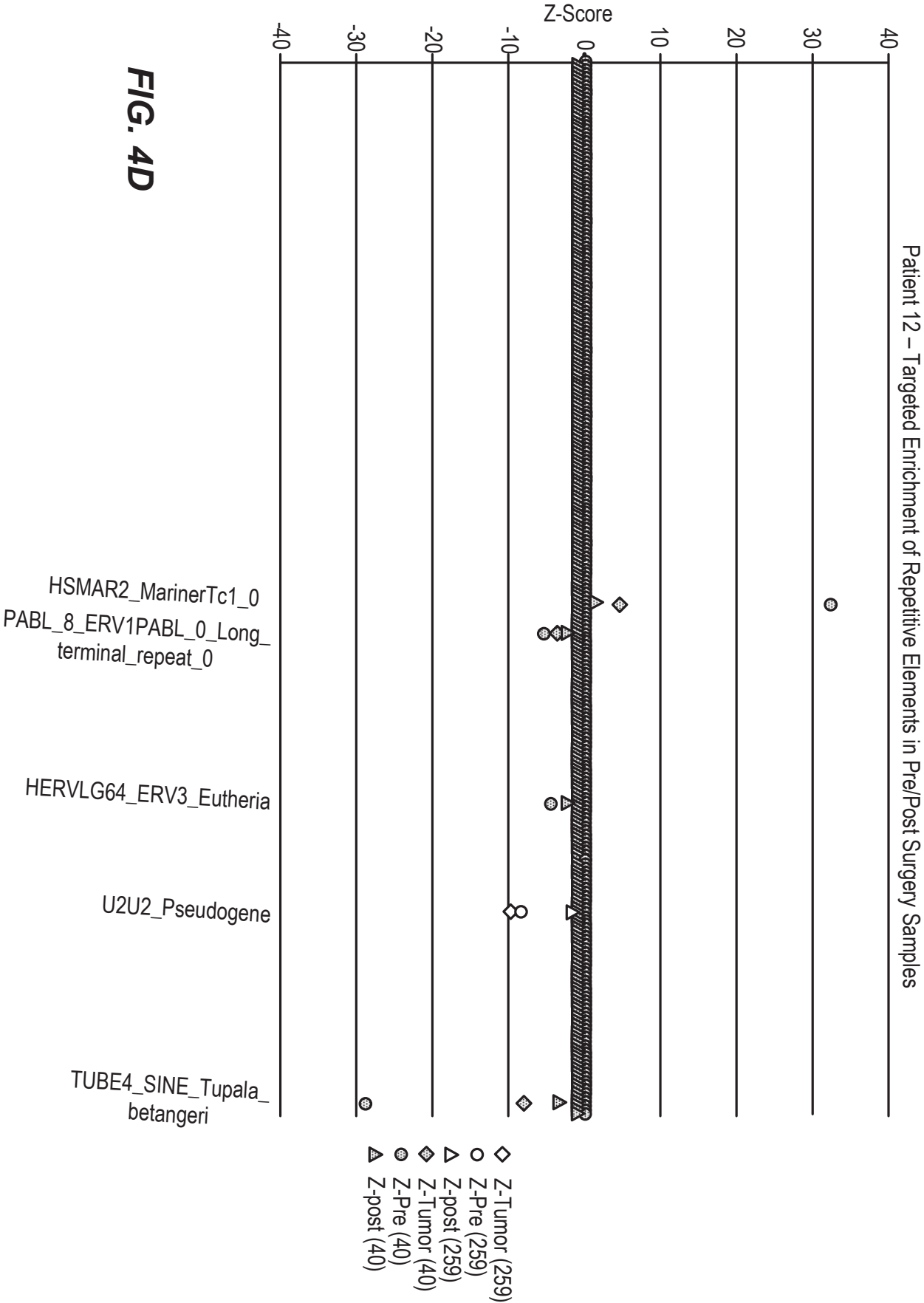


FIG. 4D

Patient 8 – Targeted Enrichment of Repetitive Elements in Pre/Post Surgery Samples

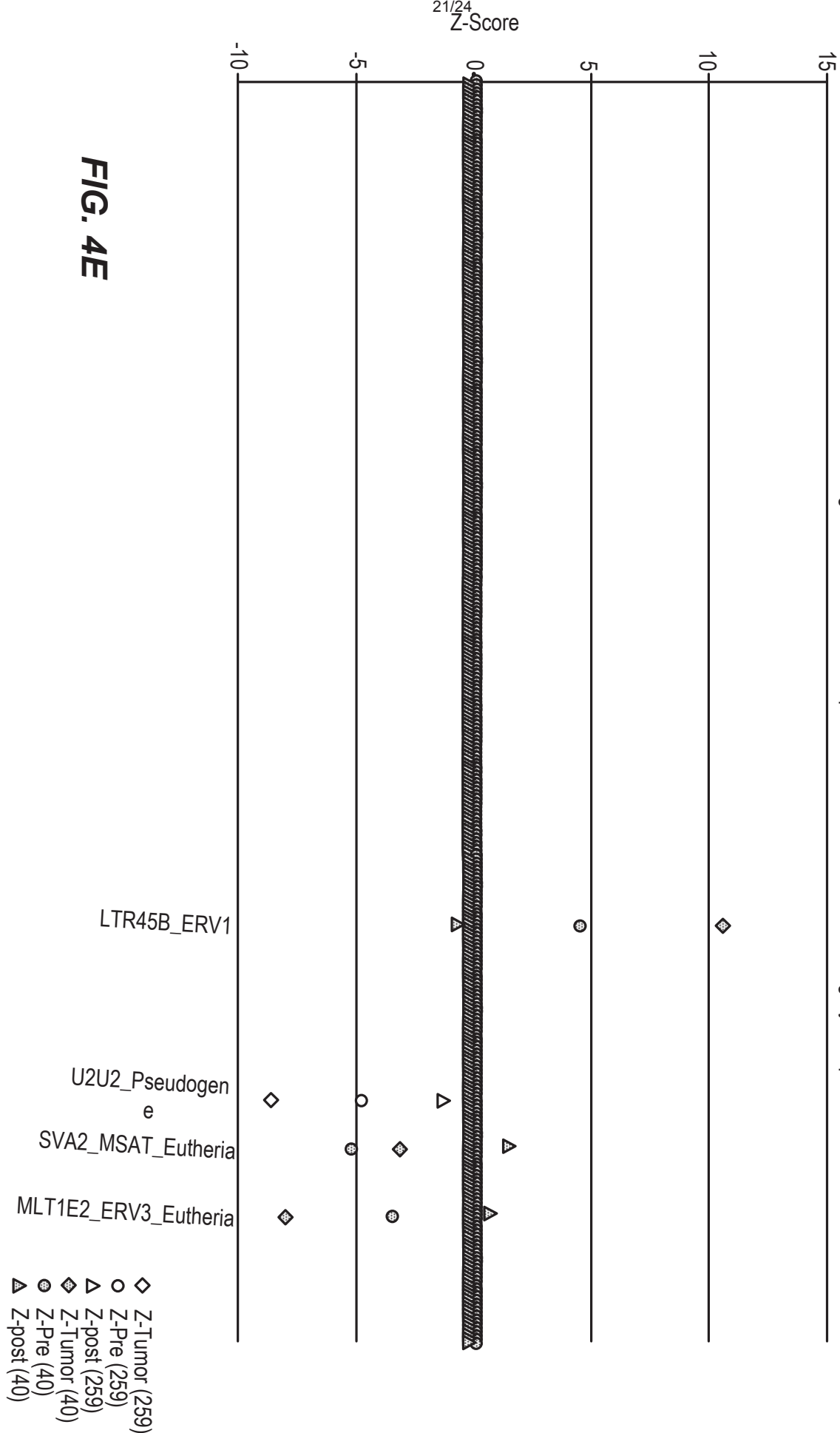


FIG. 4E

Summary: Patient 7

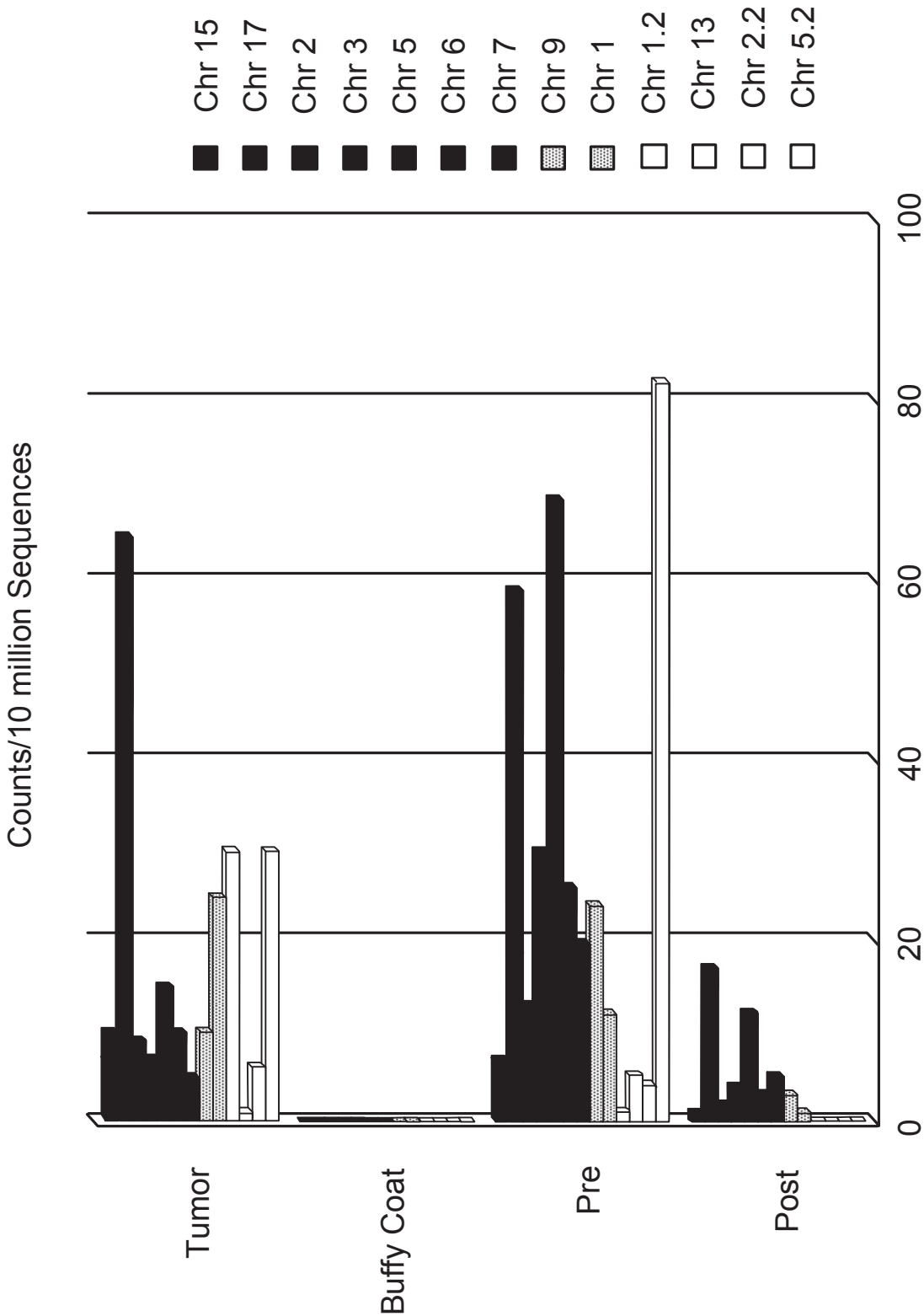
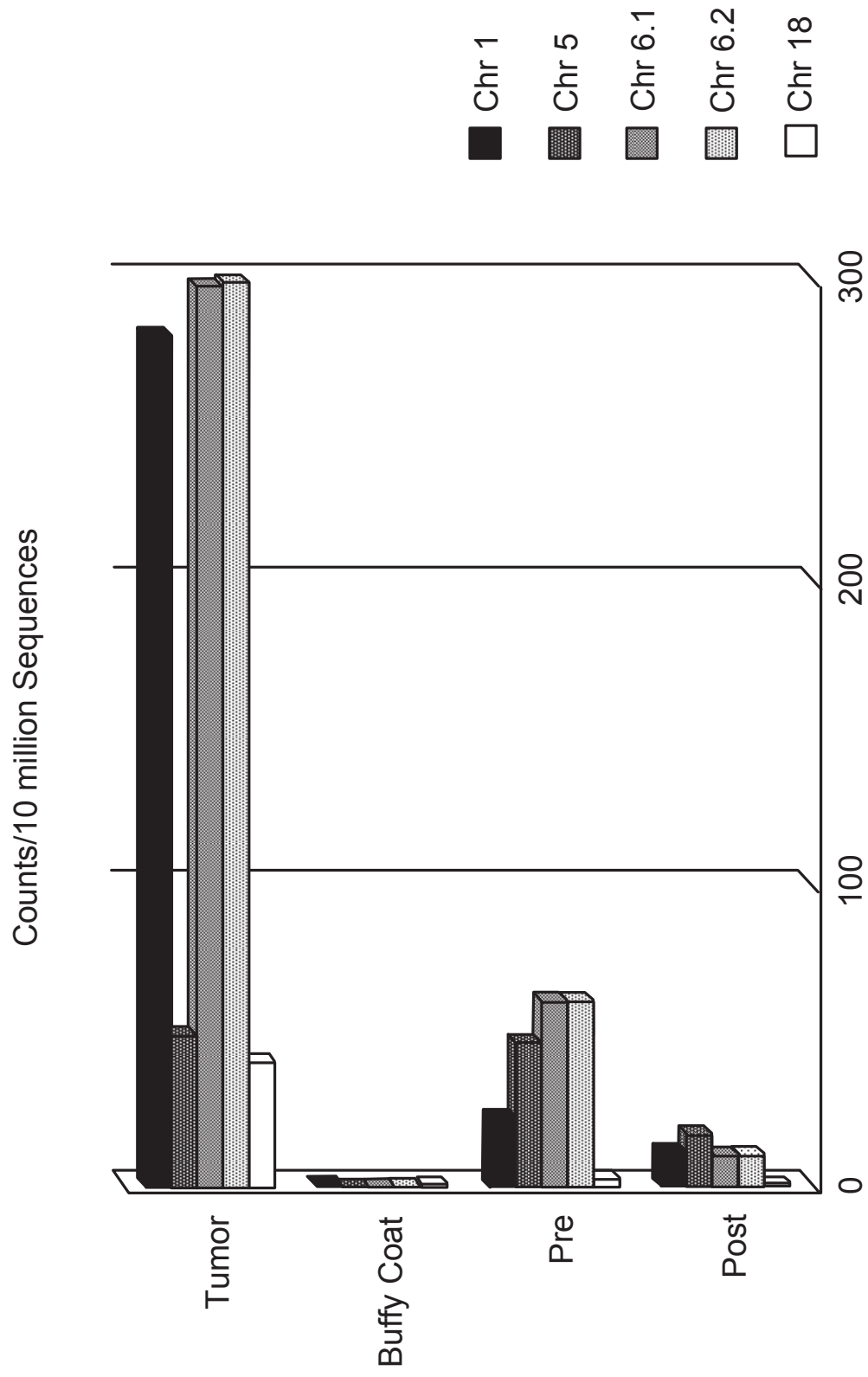
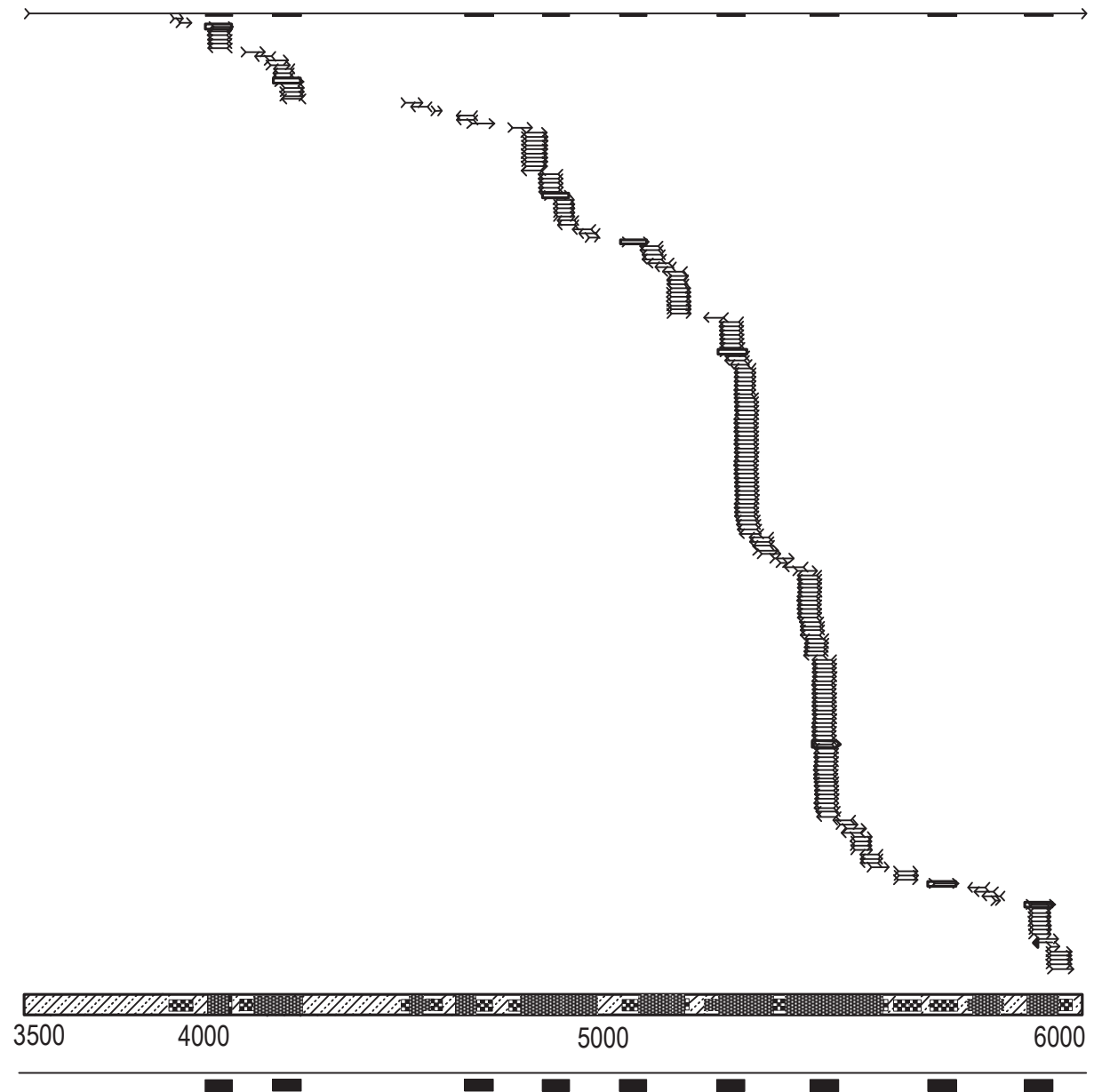


FIG. 5A

**FIG. 5B**

**FIG. 6**